

COMBINED NEEDLE ROLLER BEARINGS

WITH AXIAL BALL BEARINGS WITHOUT INNER RINGS



NKX

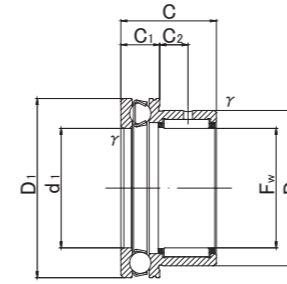
NKX.Z



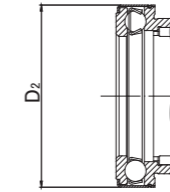
NKX



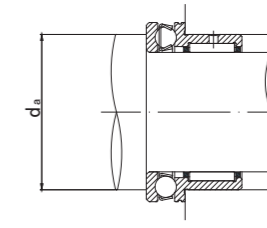
NKX.Z



NKX



NKX.Z



NKX, NKX.Z TYPE

Shaft diameter (mm)	Designation		Dimensions (mm)									Standard mounting dimensions (mm)	Basic dynamic load rating		Basic static load rating		Limiting speed *	Mass	Usable bearing designation		
	Open type	With dust cover											Radial	Axial	Radial	Axial			g (approx.)	INNER RING	WITH INNER RING
	Grease pre-packed in thrust section		Fw	D	D1	D2	C	C1	C2	rs min	d1		da MIN	Cr N	Cor N	rpm				INNER RING	WITH INNER RING
10	NKX10 —	— NKX10Z	10 +0.022 10 +0.013	19 19	24 —	— 25	23 23	9 9	6.5 6.5	0.3 0.3	10 10	18 18	8 200 8 200	10 000 10 000	9 200 9 200	14 000 14 000	9 500 9 500	36 37.5	IR71016 IR71016	NKXI 7 NKXI 7Z	
12	NKX12 —	— NKX12Z	12 +0.027 12 +0.016	21 21	26 —	— 27	23 23	9 9	6.5 6.5	0.3 0.3	12 12	20 20	9 200 9 200	10 300 10 300	11 200 11 200	15 400 15 400	9 200 9 200	40.5 42	IR91216 IR91216	NKXI 9 NKXI 9Z	
15	NKX15 —	— NKX15Z	15 +0.027 15 +0.016	24 24	28 —	— 29	23 23	9 9	6.5 6.5	0.3 0.3	15 15	23 23	12 400 12 400	10 500 10 500	14 900 14 900	16 800 16 800	8 800 8 800	44 45.5	IR121516 IR121516	NKXI 12 NKXI 12Z	
17	NKX17 —	— NKX17Z	17 +0.027 17 +0.016	26 26	30 —	— 31	25 25	9 9	8 8	0.3 0.3	17 17	25 25	12 800 12 800	10 800 10 800	16 300 16 300	18 200 18 200	8 500 8 500	52 53.5	IR141717 IR141717	NKXI 14 NKXI 14Z	
20	NKX20 —	— NKX20Z	20 +0.033 20 +0.020	30 30	35 —	— 36	30 30	10 10	10.5 10.5	0.3 0.3	20 20	29 29	17 600 17 600	14 200 14 200	25 400 25 400	24 700 24 700	7 500 7 500	83 85.5	IR172020 IR172020	NKXI 17 NKXI 17Z	
25	NKX25 —	— NKX25Z	25 +0.033 25 +0.020	37 37	42 —	— 43	30 30	11 11	9.5 9.5	0.6 0.6	25 25	35 35	20 000 20 000	19 600 19 600	32 200 32 200	37 300 37 300	6 500 6 500	124.5 127.5	IR202520 IR202520	NKXI 20 NKXI 20Z	
30	NKX30 —	— NKX30Z	30 +0.033 30 +0.020	42 42	47 —	— 48	30 30	11 11	9.5 9.5	0.6 0.6	30 30	40 40	25 100 25 100	20 400 20 400	40 100 40 100	42 200 42 200	6 200 6 200	141.5 145	IR253020 IR253020	NKXI 25 NKXI 25Z	
35	NKX35 —	— NKX35Z	35 +0.041 35 +0.025	47 47	52 —	— 53	30 30	12 12	9 9	0.6 0.6	35 35	45 45	27 000 27 000	20 400 20 400	46 200 46 200	44 700 44 700	5 600 5 600	163 167.5	IR303520 IR303520	NKXI 30 NKXI 30Z	
40	NKX40 —	— NKX40Z	40 +0.041 40 +0.025	52 52	60 —	— 61	32 32	13 13	10 10	0.6 0.6	40 40	52 52	29 400 29 400	26 900 26 900	54 100 54 100	62 900 62 900	5 000 5 000	214 220	IR354020 IR354020	NKXI 35 NKXI 35Z	
45	NKX45 —	— NKX45Z	45 +0.041 45 +0.025	58 58	65 —	— 66.5	32 32	14 14	9 9	0.6 0.6	45 45	57 57	31 100 31 100	27 900 27 900	60 100 60 100	69 200 69 200	4 600 4 600	251 264.5	IR404520 IR404520	NKXI 40 NKXI 40Z	
50	NKX50 —	— NKX50Z	50 +0.041 50 +0.025	62 62	70 —	— 71.5	35 35	14 14	10 10	0.6 0.6	50 50	62 62	43 000 43 000	28 700 28 700	85 200 85 200	75 400 75 400	4 500 4 500	277 291.5	IR455025 IR455025	NKXI 45 NKXI 45Z	
60	NKX60 —	— NKX60Z	60 +0.049 60 +0.030	72 72	85 —	— 86.5	40 40	17 17	12 12	1 1	60 60	75 75	47 500 47 500	41 400 41 400	103 000 103 000	113 000 113 000	3 700 3 700	443 465.5	IR506025 IR506025	NKXI 50 NKXI 50Z	
70	NKX70 —	— NKX70Z	70 +0.049 70 +0.030	85 85	95 —	— 96.5	40 40	18 18	11 11	1 1	70 70	85 85	55 500 55 500	43 100 43 100	120 600 120 600	127 000 127 000	3 400 3 400	577 601	IR607025 IR607025	NKXI 60 NKXI 60Z	

* Suitable for oil lubrication. In case of grease lubrication, down to 70% of this value.