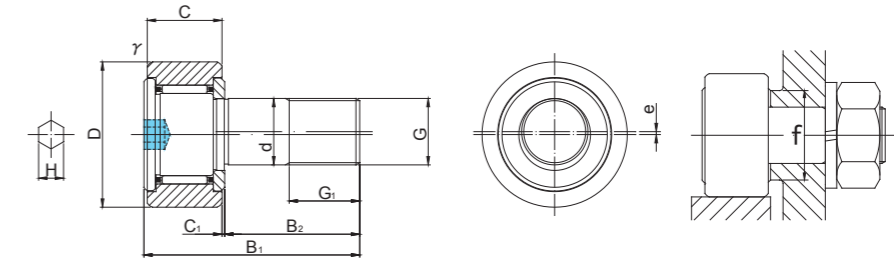
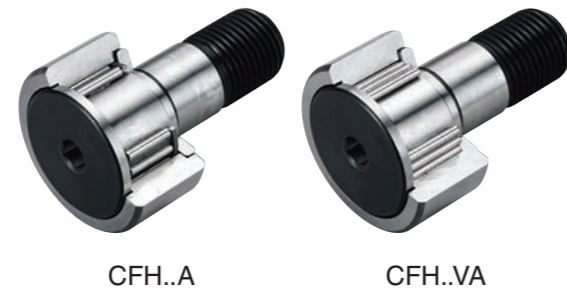
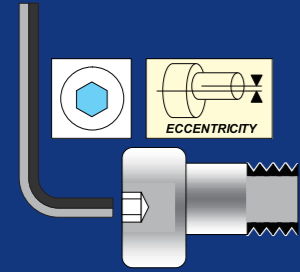


CAM FOLLOWERS

SOLID ECCENTRIC TYPE

HEXAGON SOCKET ON STUD HEAD



CFH..A TYPE

Prepacked Grease

Stud diameter (mm)	h7 tolerance	Designation				Dimensions (mm)												Basic dynamic load rating Cr N	Basic static load rating Cor N	Largest permissible load N	Limiting speed rpm	Track load capacity		Max tightening torque N·m	Mass g (approx)
		Cylindrical outer ring		Crowned outer ring R250(CF5) R500(CF6 ~ CF10-1)		D	C	d	G	G1	B1	B2	C1	H	r _s min	e	f min					Cylindrical outer ring N	Crowned outer ring N		
		Without seals	With seals	Without seals	With seals																				
5	0 -0.012	CFH 5A	CFH 5UUA	CFH 5RA	CFH 5UURA	13	9	5	M5×0.8	7.5	23	13	0.5	3	0.3	0.2	9.7	3 140	2 770	1 420	29 000	2 250	530	2	10.5
		CFH 5VA	CFH 5VUUA	CFH 5VRA	CFH 5VUURA													5 100	5 500	1 420	11 600				
6	0 -0.012	CFH 6A	CFH 6UUA	CFH 6RA	CFH 6UURA	16	11	6	M6×1	8	28	16	0.6	3	0.3	0.25	11	3 630	3 630	2 110	25 000	3 430	1 080	3	18.5
		CFH 6VA	CFH 6VUUA	CFH 6VRA	CFH 6VUURA													6 960	8 530	2 110	12 000				
8	0 -0.015	CFH 8A	CFH 8UUA	CFH 8RA	CFH 8UURA	19	11	8	M8×1.25	10	32	20	0.6	4	0.3	0.25	13	4 310	4 710	4 710	20 000	4 020	1 370	8	28.5
		CFH 8VA	CFH 8VUUA	CFH 8VRA	CFH 8VUURA													8 130	11 170	4 710	9 000				
10	0 -0.015	CFH10A	CFH10UUA	CFH10RA	CFH10UURA	22	12	10	M10×1.25	12	36	23	0.6	5	0.3	0.3	15	5 390	6 860	6 860	17 000	4 700	1 670	15	45
		CFH10VA	CFH10VUUA	CFH10VRA	CFH10VUURA													9 510	14 500	7 450	7 500				
10	0 -0.015	CFH10-1A	CFH10-1UUA	CFH10-1RA	CFH10-1UURA	26	12	10	M10×1.25	12	36	23	0.6	5	0.3	0.3	15	5 390	6 860	6 860	17 000	5 490	2 060	15	60
		CFH10-1VA	CFH10-1VUUA	CFH10-1VRA	CFH10-1VUURA													9 510	14 500	7 450	7 500				

* Without seals, suitable for grease lubrication. In case of oil lubrication, up to 130% of this value shall be permissible, and 70% of this value shall apply for types with seals.

OUTER RINGS TOLERANCE (μm)

TYPE	Cylindrical outer ring	Crowned outer ring
CF5,CF6	0/-8	0/-50
CF8,CF10,CF10-1	0/-9	0/-50

ACCESSORIES

TYPE	NUT
CF5	Attached
CF6/CF8/CF10/CF10-1	Attached