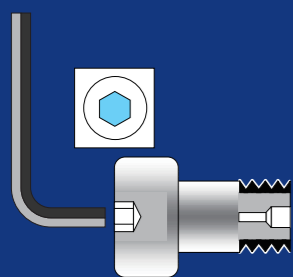


CAM FOLLOWERS

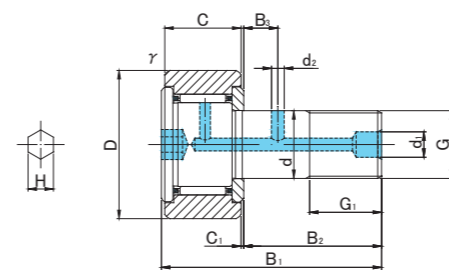
HEXAGON SOCKET ON STUD HEAD



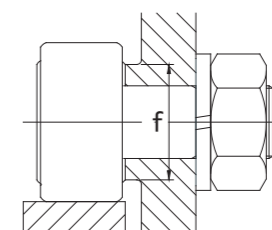
CF..A



CF.VA



CF12(V)A~CF30-2(V)A



CF..A TYPE

Prepacked Grease

| Stud diameter (mm) | h7 tolerance | Designation | | | | Dimensions (mm) | | | | | | | | | | | | | | Basic dynamic load rating Cr N | Basic static load rating Cor N | Largest permissible load N | Limiting speed * rpm | Track load capacity | | Max tightening torque N·m | Mass g (approx) |
|--------------------|--------------|------------------------|------------|---|-------------|-----------------|----|----|---------|----|-----|------|----|-----|----|----|---|--------|-------|-----------------------------------|-----------------------------------|-------------------------------|-------------------------|--------------------------|----------------------|------------------------------|--------------------|
| | | Cylindrical outer ring | | Crowned outer ring R500(CF12 ~ CF18) R1000(CF20 ≤) | | D | C | d | G | G1 | B1 | B2 | B3 | C1 | d1 | d2 | H | rs min | f min | | | | | Cylindrical outer ring N | Crowned outer ring N | | |
| | | Without seals | With seals | Without seals | With seals | | | | | | | | | | | | | | | | | | | | | | |
| 12 | 0 -0.018 | CF12A | CF12UUA | CF12RA | CF12UURA | 30 | 14 | 12 | M12×1.5 | 13 | 40 | 25 | 6 | 0.6 | 6 | 3 | 6 | 0.6 | 20 | 7 940 | 9 800 | 9 800 | 14 000 | 7 060 | 2 450 | 22 | 95 |
| | | CF12VA | CF12VUUA | CF12VRA | CF12VUURA | | | | | | | | | | | | | | | 13 430 | 19 700 | 11 270 | 6 000 | | | | |
| 12 | 0 -0.018 | CF12-1A | CF12-1UUA | CF12-1RA | CF12-1UURA | 32 | 14 | 12 | M12×1.5 | 13 | 40 | 25 | 6 | 0.6 | 6 | 3 | 6 | 0.6 | 20 | 7 940 | 9 800 | 9 800 | 14 000 | 7 450 | 2 740 | 22 | 105 |
| | | CF12-1VA | CF12-1VUUA | CF12-1VRA | CF12-1VUURA | | | | | | | | | | | | | | | 13 430 | 19 700 | 11 270 | 6 000 | | | | |
| 16 | 0 -0.018 | CF16A | CF16UUA | CF16RA | CF16UURA | 35 | 18 | 16 | M16×1.5 | 17 | 52 | 32.5 | 8 | 0.8 | 6 | 3 | 6 | 0.6 | 24 | 12 050 | 18 330 | 18 330 | 10 000 | 11 200 | 3 140 | 58 | 170 |
| | | CF16VA | CF16VUUA | CF16VRA | CF16VUURA | | | | | | | | | | | | | | | 20 680 | 37 630 | 19 800 | 4 500 | | | | |
| 18 | 0 -0.018 | CF18A | CF18UUA | CF18RA | CF18UURA | 40 | 20 | 18 | M18×1.5 | 19 | 58 | 36.5 | 8 | 0.8 | 6 | 3 | 6 | 1 | 26 | 14 700 | 25 200 | 25 200 | 8 500 | 14 400 | 3 720 | 87 | 250 |
| | | CF18VA | CF18VUUA | CF18VRA | CF18VUURA | | | | | | | | | | | | | | | 25 280 | 51 350 | 26 560 | 3 500 | | | | |
| 20 | 0 -0.021 | CF20A | CF20UUA | CF20RA | CF20UURA | 52 | 24 | 20 | M20×1.5 | 21 | 66 | 40.5 | 9 | 0.8 | 8 | 4 | 8 | 1 | 36 | 20 680 | 34 600 | 32 140 | 7 000 | 23 200 | 8 230 | 120 | 460 |
| | | CF20VA | CF20VUUA | CF20VRA | CF20VUURA | | | | | | | | | | | | | | | 33 120 | 64 480 | 32 140 | 3 500 | | | | |
| 20 | 0 -0.021 | CF20-1A | CF20-1UUA | CF20-1RA | CF20-1UURA | 47 | 24 | 20 | M20×1.5 | 21 | 66 | 40.5 | 9 | 0.8 | 8 | 4 | 8 | 1 | 36 | 20 680 | 34 600 | 32 140 | 7 000 | 21 000 | 7 150 | 120 | 385 |
| | | CF20-1VA | CF20-1VUUA | CF20-1VRA | CF20-1VUURA | | | | | | | | | | | | | | | 33 120 | 64 480 | 32 140 | 3 500 | | | | |
| 24 | 0 -0.021 | CF24A | CF24UUA | CF24RA | CF24UURA | 62 | 29 | 24 | M24×1.5 | 25 | 80 | 49.5 | 11 | 0.8 | 8 | 4 | 8 | 1 | 40 | 30 480 | 52 630 | 49 500 | 6 500 | 34 200 | 10 500 | 220 | 815 |
| | | CF24VA | CF24VUUA | CF24VRA | CF24VUURA | | | | | | | | | | | | | | | 46 550 | 92 020 | 49 500 | 3 000 | | | | |
| 24 | 0 -0.021 | CF24-1A | CF24-1UUA | CF24-1RA | CF24-1UURA | 72 | 29 | 24 | M24×1.5 | 25 | 80 | 49.5 | 11 | 0.8 | 8 | 4 | 8 | 1 | 40 | 30 480 | 52 630 | 49 500 | 6 500 | 39 800 | 12 900 | 220 | 1 140 |
| | | CF24-1VA | CF24-1VUUA | CF24-1VRA | CF24-1VUURA | | | | | | | | | | | | | | | 46 550 | 92 020 | 49 500 | 3 000 | | | | |
| 30 | 0 -0.021 | CF30A | CF30UUA | CF30RA | CF30UURA | 80 | 35 | 30 | M30×1.5 | 32 | 100 | 63 | 15 | 1 | 8 | 4 | 8 | 1 | 46 | 45 370 | 85 060 | 73 700 | 5 000 | 52 600 | 14 900 | 450 | 1 870 |
| | | CF30VA | CF30VUUA | CF30VRA | CF30VUURA | | | | | | | | | | | | | | | 67 620 | 144 060 | 73 700 | 2 200 | | | | |
| 30 | 0 -0.021 | CF30-1A | CF30-1UUA | CF30-1RA | CF30-1UURA | 85 | 35 | 30 | M30×1.5 | 32 | 100 | 63 | 15 | 1 | 8 | 4 | 8 | 1 | 46 | 45 370 | 85 060 | 73 700 | 5 000 | 56 000 | 16 100 | 450 | 2 030 |
| | | CF30-1VA | CF30-1VUUA | CF30-1VRA | CF30-1VUURA | | | | | | | | | | | | | | | 67 620 | 144 060 | 73 700 | 2 200 | | | | |
| 30 | 0 -0.021 | CF30-2A | CF30-2UUA | CF30-2RA | CF30-2UURA | 90 | 35 | 30 | M30×1.5 | 32 | 100 | 63 | 15 | 1 | 8 | 4 | 8 | 1 | 46 | 45 370 | 85 060 | 73 700 | 5 000 | 59 300 | 17 300 | 450 | 2 220 |
| | | CF30-2VA | CF30-2VUUA | CF30-2VRA | CF30-2VUURA | | | | | | | | | | | | | | | 67 620 | 144 060 | 73 700 | 2 200 | | | | |

* Without seals, suitable for grease lubrication. In case of oil lubrication, up to 130% of this value shall be permissible, and 70% of this value shall apply for types with seals.

OUTER RINGS TOLERANCE (μm)

| TYPE | Cylindrical outer ring | Crowned outer ring |
|-------------------------|------------------------|--------------------|
| CF12 | 0/-9 | 0/-50 |
| CF12-1,CF16,CF18,CF20-1 | 0/-11 | 0/-50 |
| CF20,CF24,CF24-1,CF30 | 0/-13 | 0/-50 |
| CF30-1,CF30-2 | 0/-15 | 0/-50 |

ACCESSORIES

| TYPE | STOP PLUG | RESIN PLUG | NUT |
|--|--------------|--------------|----------|
| CF12/CF12-1/CF16/CF18 | φ 6 Attached | φ 6 Attached | Attached |
| CF20/CF20-1/CF24/CF24-1/CF30/CF30-1/CF30-2 | φ 8 Attached | φ 8 Attached | Attached |