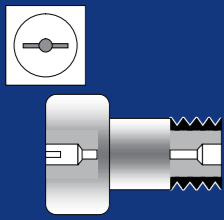
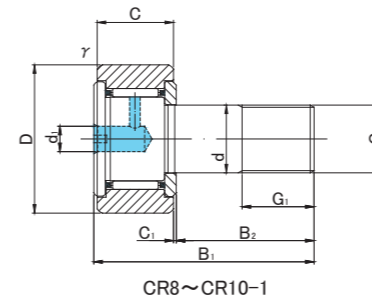


CAM FOLLOWERS

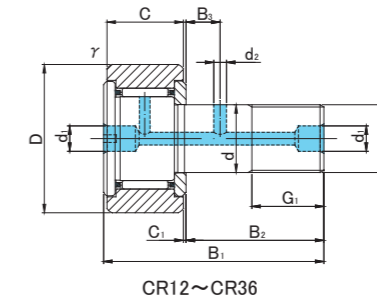
INCH DIMENSION
SCREWDRIVER SLOT HEAD



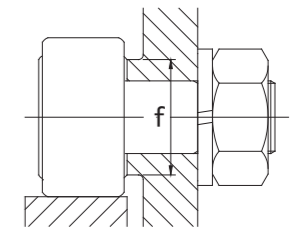
CR



CR8~CR10-1



CR12~CR36



CR TYPE

Prepacked Grease

Stud diameter	Designation				Dimensions (inch/mm)																	Basic dynamic load rating	Basic static load rating	Limiting speed *	Track load capacity		Max tightening torque	Mass								
	Cylindrical outer ring		Crowned outer ring R250(≤CR8-1) R500(CR10≤)		D	C	d	G UNF	G1	B1		B2	B3	C1	d1	d2	r	f	Cr N	Cor N	rpm				Cylindrical outer ring N	Crowned outer ring N			N·m	g (approx)						
d mm (inch)	Without seals	With seals	Without seals	With seals						Without seals	With seals											Without seals	With seals	Without seals	With seals	Without seals	With seals	Without seals			With seals	Without seals	With seals	Without seals	With seals	Without seals
4.826 (-)	CR8	CR8UU	CR8R	CR8UUR	1/2	12.7	11/32	8.731	—	4.826	No.10-32	1/4	6.35	7/8	22.225	1/2	12.7	—	—	0.8	1/8	3.175	—	—	1/64	0.397	21/64	8.334	2 550	2 160	28 000	2 160	730	2	9	
	CR8-1	CR8-1UU	CR8-1R	CR8-1UUR			3/8	9.525						1 1/32	26.194																					5/8
6.350 (1/4)	CR10	CR10UU	CR10R	CR10UUR	5/8	15.875	13/32	10.319	1/4	6.35	1/4 - 28	5/16	7.938	1 1/16	26.988	5/8	15.875	—	—	0.8	1/8	3.175	—	—	1/64	0.397	29/64	11.509	3 630	3 630	21 000	3 230	1 180	3	19	
	CR10-1	CR10-1UU	CR10-1R	CR10-1UUR			7/16	11.112						1 7/32	30.956																					3/4
9.525 (3/8)	CR12	CR12UU	CR12R	CR12UUR	3/4	19.05	1/2	12.7	3/8	9.525	3/8 - 24	3/8	9.525	1	13/32	35.719	7/8	22.225	1/4	6.35	0.8	3/16	4.762	3/32	2.381	1/32	0.794	17/32	13.494	4 410	5 100	15 000	4 510	1 270	17	35
	CR14	CR14UU	CR14R	CR14UUR										7/8	22.225	7/8												22.225	7/8							
11.112 (7/16)	CR16	CR16UU	CR16R	CR16UUR	1	25.4	5/8	15.875	7/16	11.112	7/16 - 20	1/2	12.7	1	21/32	42.069	1	25.4	1/4	6.35	0.8	3/16	4.762	1/8	3.175	3/64	1.191	45/64	17.859	8 820	10 780	13 000	7 250	1 960	20	73
	CR18	CR18UU	CR18R	CR18UUR										1 1/8	28.575	1/16										1.588	3/4	19.05	9 210							
12.700 (1/2)	CR20	CR20UU	CR20R	CR20UUR	1 1/4	31.75	3/4	19.05	1/2	12.7	1/2 - 20	5/8	15.875	2	1/32	51.594	1 1/4	31.75	5/16	7.938	0.8	3/16	4.762	1/8	3.175	1/16	1.588	55/64	21.828	14 210	15 970	11 000	10 680	2 840	28	132
	CR22	CR22UU	CR22R	CR22UUR										1 3/8	34.925	1 1/4										31.75	11 760	2 940	157							
15.875 (5/8)	CR24	CR24UU	CR24R	CR24UUR	1 1/2	38.1	7/8	22.225	5/8	15.875	5/8 - 18	3/4	19.05	2	13/32	61.119	1 1/2	38.1	3/8	9.525	0.8	3/16	4.762	5/32	3.969	1/16	1.588	1 3/64	26.196	18 520	24 210	8 500	15 390	3 820	64	225
	CR26	CR26UU	CR26R	CR26UUR										1 5/8	41.275	1 1/2										38.1	16 660	3 820	260							
19.05 (3/4)	CR28	CR28UU	CR28R	CR28UUR	1 3/4	44.45	1	25.4	3/4	19.05	3/4 - 16	7/8	22.225	2	25/32	70.644	1 3/4	44.45	7/16	11.112	0.8	3/16	4.762	5/32	3.969	1/16	1.588	1 9/32	32.543	25 090	38 220	7 000	20 970	3 820	117	365
	CR30	CR30UU	CR30R	CR30UUR										1 7/8	47.625	1 3/4										44.45	22 440	4 700	410							
22.225 (7/8)	CR32	CR32UU	CR32R	CR32UUR	2	50.8	1 1/4	31.75	7/8	22.225	7/8 - 14	1	25.4	3	9/32	83.344	2	50.8	1/2	12.7	0.8	3/16	4.762	3/16	4.762	1/16	1.588	1 15/32	37.306	32 440	63 800	5 500	30 870	4 900	186	615
	CR36	CR36UU	CR36R	CR36UUR										2 1/4	57.15	2 1/4										57.15	34 690	5 980	750							

* Without seals, suitable for grease lubrication. In case of oil lubrication, up to 130% of this value shall be permissible, and 70% of this value shall apply for types with seals.

ACCESSORIES

TYPE	STOP PLUG	RESIN PLUG	NUT
CR8, CR8-1, CR10, CR10-1	—	—	Attached
CR12, CR14, CR16, CR18, CR20, CR22	φ 4.8 Attached	φ 4.8 Attached	Attached
CR24, CR26, CR28, CR30, CR32, CR36	φ 4.8 Attached	φ 4.8 Attached	Attached