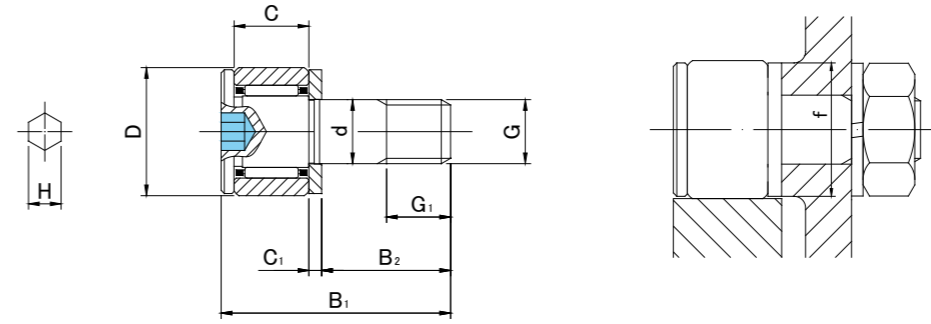


**CAM FOLLOWERS**  
**STAINLESS STEEL**  
 MINIATURE TYPE  
 HEXAGON SOCKET ON STUD HEAD  
 SUS/INOX



**CFS..MA TYPE**

Prepacked Grease

Stud diameter (mm)	Designation	Dimensions (mm)											Basic dynamic load rating	Basic static load rating	Largest permissible load	Max tightening torque	Mass
		Cylindrical outer ring		D	C	d	G	G1	B1	B2	C1	H					
h6 tolerance	With cage	Full roller															
2.5	CFS 2.5MA	—	5	3	2.5	M2.5×0.45	2.5	9.5	5	0.7	0.9	4.8	370	300	260	0.2	1
	0 -0.006	—											CFS 2.5VMA	920	990		
3	CFS 3MA	—	6	4	3	M3×0.5	3	11.5	6	0.7	1.5	5.8	570	560	360	0.3	2
	0 -0.006	—											CFS 3VMA	1 260	1 620		
4	CFS 4MA	—	8	5	4	M4×0.7	4	15	8	1	2	7.7	990	990	780	0.6	4
	0 -0.008	—											CFS 4VMA	2 160	2 790		
5	CFS 5MA	—	10	6	5	M5×0.8	5	18	10	1	2.5	9.6	1 440	1 710	1 420	1.3	7
	0 -0.008	—											CFS 5VMA	2 880	4 330		
6	CFS 6MA	—	12	7	6	M6×1	6	21.5	12	1.2	3	11.6	1 890	1 980	2 110	2.3	13
	0 -0.008	—											CFS 6VMA	4 240	5 760		

OUTER RINGS TOLERANCE (µm)

TYPE	Cylindrical outer ring
CFS2.5M,CFS3M,CFS4M,CFS5M,CFS6M	0/-8

ACCESSORIES

TYPE	
All types	NUT Attached

CFS..MA

CFS..MA