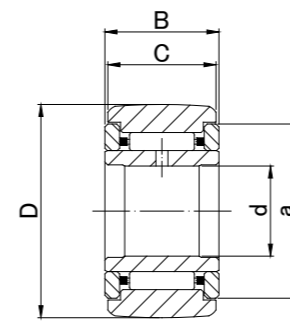




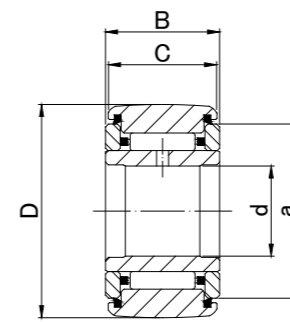
NART..R



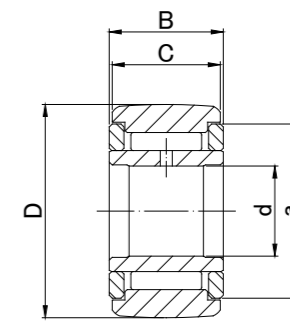
NART..VR



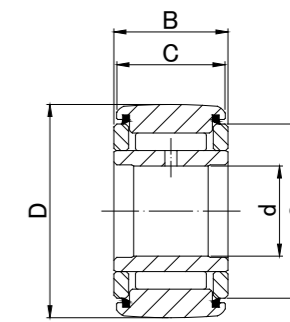
NART..R  
NART..X



NART..UUR  
NART..UUX



NART..VR  
NART..VX



NART..UUVR  
NART..UUVX

**NART TYPE**

Prepacked Grease

Shaft Diameter (mm)	Designation				Dimensions (mm)					Basic dynamic load rating	Basic static load rating	Track load capacity		Limiting speed *	Mass			
	Crowned outer ring R500( ≤ NART17) R1000(NART20 ≤ )		Cylindrical outer ring		d	D	B	C	a			f/s min	Cr N			Cor N	Crowned outer ring N	Cylindrical outer ring N
	Without seals	With seals	Without seals	With seals														
5	NART 5R	NART 5UUR	NART 5X	NART 5UUX	5 0	16	12	11	12	0.3	3 620	3 720	1 080	3 430	25 000	14.5		
	NART 5VR	NART 5UUVR	NART 5VX	NART 5UUVX	5 -0.008												8 500	15.1
6	NART 6R	NART 6UUR	NART 6X	NART 6UUX	6 0	19	12	11	14	0.3	4 200	4 700	1 370	4 020	20 000	20.5		
	NART 6VR	NART 6UUVR	NART 6VX	NART 6UUVX	6 -0.008												7 000	21.5
8	NART 8R	NART 8UUR	NART 8X	NART 8UUX	8 0	24	15	14	17.5	0.3	6 600	7 300	1 860	5 950	17 000	41.5		
	NART 8VR	NART 8UUVR	NART 8VX	NART 8UUVX	8 -0.008												15 600	42.5
10	NART10R	NART10UUR	NART10X	NART10UUX	10 0	30	15	14	23.5	0.6	8 600	8 300	2 450	7 060	15 000	64.5		
	NART10VR	NART10UUVR	NART10VX	NART10UUVX	10 -0.008												15 600	18 100
12	NART12R	NART12UUR	NART12X	NART12UUX	12 0	32	15	14	25.5	0.6	9 100	9 200	2 740	7 450	13 000	71		
	NART12VR	NART12UUVR	NART12VX	NART12UUVX	12 -0.008												16 800	20 500
15	NART15R	NART15UUR	NART15X	NART15UUX	15 0	35	19	18	29	0.6	14 400	17 600	3 140	11 200	10 000	102		
	NART15VR	NART15UUVR	NART15VX	NART15UUVX	15 -0.008												25 100	36 400
17	NART17R	NART17UUR	NART17X	NART17UUX	17 0	40	21	20	32.5	1	18 600	22 500	3 720	14 400	9 500	149		
	NART17VR	NART17UUVR	NART17VX	NART17UUVX	17 -0.008												32 000	46 200
20	NART20R	NART20UUR	NART20X	NART20UUX	20 0	47	25	24	38	1	24 100	32 700	7 150	21 000	8 000	250		
	NART20VR	NART20UUVR	NART20VX	NART20UUVX	20 -0.010												41 700	67 300
25	NART25R	NART25UUR	NART25X	NART25UUX	25 0	52	25	24	43	1	25 800	37 500	8 230	23 200	7 000	285		
	NART25VR	NART25UUVR	NART25VX	NART25UUVX	25 -0.010												45 500	79 000
30	NART30R	NART30UUR	NART30X	NART30UUX	30 0	62	29	28	50.5	1	36 200	56 900	10 500	33 000	5 500	470		
	NART30VR	NART30UUVR	NART30VX	NART30UUVX	30 -0.010												59 800	110 400
35	NART35R	NART35UUR	NART35X	NART35UUX	35 0	72	29	28	53.5	1	38 200	62 800	12 900	38 000	5 000	640		
	NART35VR	NART35UUVR	NART35VX	NART35UUVX	35 -0.012												63 000	121 500
40	NART40R	NART40UUR	NART40X	NART40UUX	40 0	80	32	30	61.5	1	46 200	84 700	14 900	44 400	4 000	845		
	NART40VR	NART40UUVR	NART40VX	NART40UUVX	40 -0.012												76 200	164 200
45	NART45R	NART45UUR	NART45X	NART45UUX	45 0	85	32	30	66.5	1	49 300	95 200	16 100	47 000	4 000	915		
	NART45VR	NART45UUVR	NART45VX	NART45UUVX	45 -0.012												80 200	181 100
50	NART50R	NART50UUR	NART50X	NART50UUX	50 0	90	32	30	76	1	51 100	102 300	17 300	50 000	3 500	980		
	NART50VR	NART50UUVR	NART50VX	NART50UUVX	50 -0.012												84 100	198 000

\* Without seals, suitable for grease lubrication. In case of oil lubrication, up to 130% of this value shall be permissible, and 70% of this value shall apply for types with seals.

OUTER RINGS TOLERANCE (Outside diameter) (µm)

TYPE	Crowned outer ring	Cylindrical outer ring
NART5	0/-50	0/-8
NART6,NART8,NART10	0/-50	0/-9
NART12,NART15,NART17,NART20	0/-50	0/-11
NART25,NART30,NART35,NART40	0/-50	0/-13
NART45,NART50	0/-50	0/-15