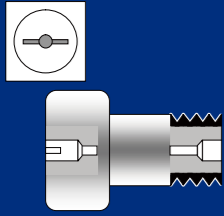
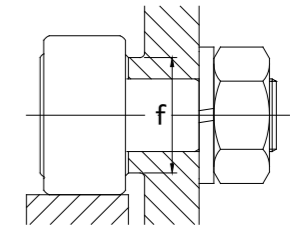
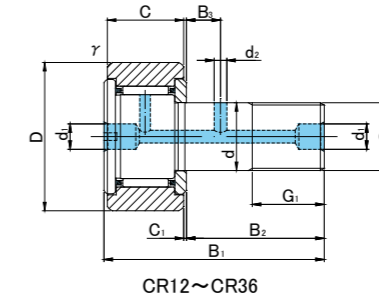
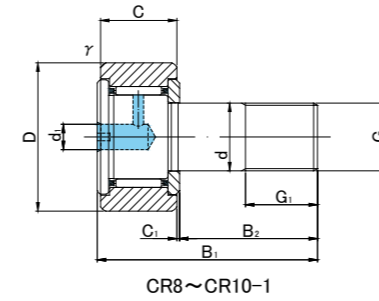


CAM FOLLOWERS

INCH DIMENSION
SCREWDRIVER SLOT HEAD



CR






CR TYPE

Prepacked Grease

Stud diameter	Designation				Dimensions (inch/mm)																	Basic dynamic load rating	Basic static load rating	Limiting speed *	Track load capacity		Max tightening torque	Mass							
	Cylindrical outer ring		Crowned outer ring R250(≤CR8-1) R500(CR10≤)		D	C	d	G UNF	G1	B1	B2	B3	C1	d1	d2	r	f	Cr N	Cor N	rpm	Cylindrical outer ring N				Crowned outer ring N	N·m			g (approx)						
d mm (inch)	Without seals	With seals	Without seals	With seals																	Without seals	With seals	Without seals	With seals	Without seals		With seals	Without seals		With seals	Without seals	With seals	Without seals	With seals	Without seals
4.826 (-)	CR8	CR8UU	CR8R	CR8UUR	1/2	12.7	11/32	8.731	—	4.826	No.10-32	1/4	6.35	7/8	22.225	—	—	0.8	1/8	3.175	—	—	1/64	0.397	21/64	8.334	2 550	2 160	28 000	2 160	730	2	9		
	CR8-1	CR8-1UU	CR8-1R	CR8-1UUR		3/8	9.525	1 1/32						26.194	5/8															15.875	2 350		730	10	
6.350 (1/4)	CR10	CR10UU	CR10R	CR10UUR	5/8	15.875	13/32	10.319	1/4	6.35	1/4 - 28	5/16	7.938	1 1/16	26.988	—	—	0.8	1/8	3.175	—	—	1/64	0.397	29/64	11.509	3 630	3 630	21 000	3 230	1 180	3	19		
	CR10-1	CR10-1UU	CR10-1R	CR10-1UUR		7/16	11.112	1 7/32						30.956	3/4															19.05	3 430		1 180	21	
9.525 (3/8)	CR12	CR12UU	CR12R	CR12UUR	3/4	19.05	1/2	12.7	3/8	9.525	3/8 - 24	3/8	9.525	1 13/32	35.719	7/8	22.225	1/4	6.35	0.8	3/16	4.762	3/32	2.381	1/32	0.794	17/32	13.494	4 410	5 100	15 000	4 510	1 270	17	35
	CR14	CR14UU	CR14R	CR14UUR	7/8	22.225								19/32	15.081																	4 800	5 780		14 000
11.112 (7/16)	CR16	CR16UU	CR16R	CR16UUR	1	25.4	5/8	15.875	7/16	11.112	7/16 - 20	1/2	12.7	1 21/32	42.069	1	25.4	1/4	6.35	0.8	3/16	4.762	1/8	3.175	3/64	1.191	45/64	17.859	8 820	10 780	13 000	7 250	1 960	20	73
	CR18	CR18UU	CR18R	CR18UUR	1 1/8	28.575								1/16	1.588										3/4	19.05	9 210	11 560				12 000	7 740		2 350
12.700 (1/2)	CR20	CR20UU	CR20R	CR20UUR	1 1/4	31.75	3/4	19.05	1/2	12.7	1/2 - 20	5/8	15.875	2 1/32	51.594	1 1/4	31.75	5/16	7.938	0.8	3/16	4.762	1/8	3.175	1/16	1.588	55/64	21.828	14 210	15 970	11 000	10 680	2 840	28	132
	CR22	CR22UU	CR22R	CR22UUR	1 3/8	34.925								11 760	2 940																	157			
15.875 (5/8)	CR24	CR24UU	CR24R	CR24UUR	1 1/2	38.1	7/8	22.225	5/8	15.875	5/8 - 18	3/4	19.05	2 13/32	61.119	1 1/2	38.1	3/8	9.525	0.8	3/16	4.762	5/32	3.969	1/16	1.588	1 3/64	26.196	18 520	24 210	8 500	15 390	3 820	64	225
	CR26	CR26UU	CR26R	CR26UUR	1 5/8	41.275								16 660	3 820																	260			
19.05 (3/4)	CR28	CR28UU	CR28R	CR28UUR	1 3/4	44.45	1	25.4	3/4	19.05	3/4 - 16	7/8	22.225	2 25/32	70.644	1 3/4	44.45	7/16	11.112	0.8	3/16	4.762	5/32	3.969	1/16	1.588	1 9/32	32.543	25 090	38 220	7 000	20 970	3 820	117	365
	CR30	CR30UU	CR30R	CR30UUR	1 7/8	47.625								22 440	4 700																	410			
22.225 (7/8)	CR32	CR32UU	CR32R	CR32UUR	2	50.8	1 1/4	31.75	7/8	22.225	7/8 - 14	1	25.4	3 9/32	83.344	2	50.8	1/2	12.7	0.8	3/16	4.762	3/16	4.762	1/16	1.588	1 15/32	37.306	32 440	63 800	5 500	30 870	4 900	186	615
	CR36	CR36UU	CR36R	CR36UUR	2 1/4	57.15								34 690	5 980																	750			

* Without seals, suitable for grease lubrication. In case of oil lubrication, up to 130% of this value shall be permissible, and 70% of this value shall apply for types with seals.

ACCESSORIES

TYPE			
CR8, CR8-1, CR10, CR10-1	—	—	Attached
CR12, CR14, CR16, CR18, CR20, CR22	φ 4.8 Attached	φ 4.8 Attached	Attached
CR24, CR26, CR28, CR30, CR32, CR36	φ 4.8 Attached	φ 4.8 Attached	Attached