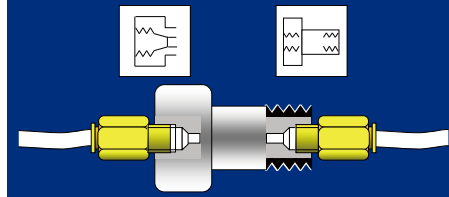


# CAM FOLLOWERS

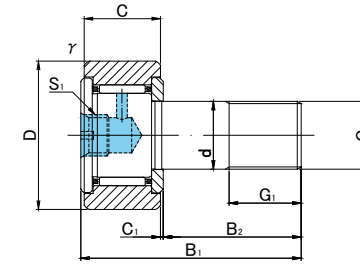
TAP HOLE FOR PIPING  
SCREWDRIVER SLOT HEAD



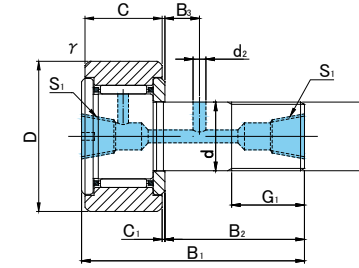
CFT



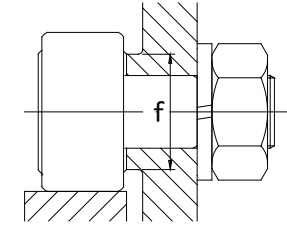
CFT.V



CFT6(V)~CFT10-1(V)



CFT12(V)~CFT18(V)



## CFT TYPE

Prepacked Grease


Stud diameter (mm)	h7 tolerance	Designation				Dimensions (mm)														Basic dynamic load rating Cr N	Basic static load rating Cor N	Largest permissible load N	Limiting speed * rpm	Track load capacity		Max tightening torque N·m	Mass g (approx)
		Cylindrical outer ring		Crowned outer ring R500(CF6 ~ CF18)		D	C	d	G	G1	B1	B2	B3	C1	S1	d2	r <sub>s</sub> min	f min	Cylindrical outer ring N					Crowned outer ring N			
		Without seals	With seals	Without seals	With seals																						
6	0 -0.012	CFT 6	CFT 6UU	CFT 6R	CFT 6UUR	16	11	6	M6×1	8	28	16	—	0.6	M6×0.75	—	0.3	11	3 630	3 630	2 110	25 000	3 430	1 080	3	18.5	
		CFT 6V	CFT 6VUU	CFT 6VR	CFT 6VUUR														6 960	8 530	2 110	12 000					
8	0 -0.015	CFT 8	CFT 8UU	CFT 8R	CFT 8UUR	19	11	8	M8×1.25	10	32	20	—	0.6	M6×0.75	—	0.3	13	4 310	4 710	4 710	20 000	4 020	1 370	8	28.5	
		CFT 8V	CFT 8VUU	CFT 8VR	CFT 8VUUR														8 130	11 170	4 710	9 000					
10	0 -0.015	CFT10	CFT10UU	CFT10R	CFT10UUR	22	12	10	M10×1.25	12	36	23	—	0.6	M6×0.75	—	0.3	15	5 390	6 860	6 860	17 000	4 700	1 670	15	45	
		CFT10V	CFT10VUU	CFT10VR	CFT10VUUR														9 510	14 500	7 450	7 500					
10	0 -0.015	CFT10-1	CFT10-1UU	CFT10-1R	CFT10-1UUR	26	12	10	M10×1.25	12	36	23	—	0.6	M6×0.75	—	0.3	15	5 390	6 860	6 860	17 000	5 490	2 060	15	60	
		CFT10-1V	CFT10-1VUU	CFT10-1VR	CFT10-1VUUR														9 510	14 500	7 450	7 500					
12	0 -0.018	CFT12	CFT12UU	CFT12R	CFT12UUR	30	14	12	M12×1.5	13	40	25	6	0.6	M6×0.75	3	0.6	20	7 940	9 800	9 800	14 000	7 060	2 450	22	95	
		CFT12V	CFT12VUU	CFT12VR	CFT12VUUR														13 430	19 700	11 270	6 000					
12	0 -0.018	CFT12-1	CFT12-1UU	CFT12-1R	CFT12-1UUR	32	14	12	M12×1.5	13	40	25	6	0.6	M6×0.75	3	0.6	20	7 940	9 800	9 800	14 000	7 450	2 740	22	105	
		CFT12-1V	CFT12-1VUU	CFT12-1VR	CFT12-1VUUR														13 430	19 700	11 270	6 000					
16	0 -0.018	CFT16	CFT16UU	CFT16R	CFT16UUR	35	18	16	M16×1.5	17	52	32.5	8	0.8	Rc1/8	3	0.6	24	12 050	18 330	18 330	10 000	11 200	3 140	58	170	
		CFT16V	CFT16VUU	CFT16VR	CFT16VUUR														20 680	37 630	19 800	4 500					
18	0 -0.018	CFT18	CFT18UU	CFT18R	CFT18UUR	40	20	18	M18×1.5	19	58	36.5	8	0.8	Rc1/8	3	1	26	14 700	25 200	25 200	8 500	14 400	3 720	87	250	
		CFT18V	CFT18VUU	CFT18VR	CFT18VUUR														25 280	51 350	26 560	3 500					

\* Without seals, suitable for grease lubrication. In case of oil lubrication, up to 130% of this value shall be permissible, and 70% of this value shall apply for types with seals.

### OUTER RINGS TOLERANCE (μm)

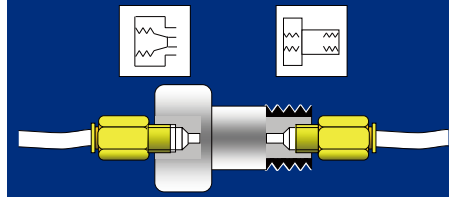
TYPE	Cylindrical outer ring	Crowned outer ring
CF6	0/-8	0/-50
CF8,CF10,CF10-1,CF12	0/-9	0/-50
CF12-1,CF16,CF18,CF20-1	0/-11	0/-50
CF20,CF24,CF24-1,CF30	0/-13	0/-50
CF30-1,CF30-2	0/-15	0/-50

### ACCESSORIES

TYPE	
All types	 NUT Attached

# CAM FOLLOWERS

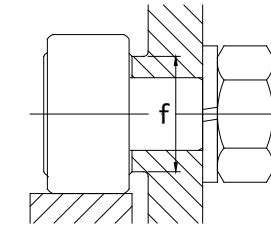
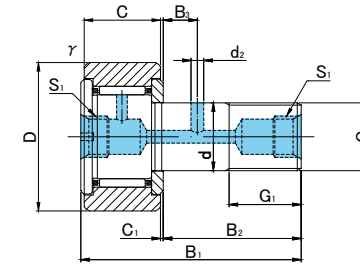
TAP HOLE FOR PIPING  
SCREWDRIVER SLOT HEAD



CFT



CFT.V



## CFT TYPE

Prepacked Grease

Stud diameter (mm)	h7 tolerance	Designation				Dimensions (mm)														Basic dynamic load rating Cr N	Basic static load rating Cor N	Largest permissible load N	Limiting speed * rpm	Track load capacity		Max tightening torque N·m	Mass g (approx)
		Cylindrical outer ring		Crowned outer ring R1000(CF20 ≤)		D	C	d	G	G1	B1	B2	B3	C1	S1	d2	r <sub>s</sub> min	f min	Cylindrical outer ring N					Crowned outer ring N			
		Without seals	With seals	Without seals	With seals																						
20	0 -0.021	CFT20	CFT20UU	CFT20R	CFT20UUR	52	24	20	M20×1.5	21	66	40.5	9	0.8	Rc1/8	4	1	36	20 680	34 600	32 140	7 000	23 200	8 230	120	460	
		CFT20V	CFT20VUU	CFT20VR	CFT20VUUR														33 120	64 480	32 140	3 500					
20	0 -0.021	CFT20-1	CFT20-1UU	CFT20-1R	CFT20-1UUR	47	24	20	M20×1.5	21	66	40.5	9	0.8	Rc1/8	4	1	36	20 680	34 600	32 140	7 000	21 000	7 150	120	385	
		CFT20-1V	CFT20-1VUU	CFT20-1VR	CFT20-1VUUR														33 120	64 480	32 140	3 500					
24	0 -0.021	CFT24	CFT24UU	CFT24R	CFT24UUR	62	29	24	M24×1.5	25	80	49.5	11	0.8	Rc1/8	4	1	40	30 480	52 630	49 500	6 500	34 200	10 500	220	815	
		CFT24V	CFT24VUU	CFT24VR	CFT24VUUR														46 550	92 020	49 500	3 000					
24	0 -0.021	CFT24-1	CFT24-1UU	CFT24-1R	CFT24-1UUR	72	29	24	M24×1.5	25	80	49.5	11	0.8	Rc1/8	4	1	40	30 480	52 630	49 500	6 500	39 800	12 900	220	1 140	
		CFT24-1V	CFT24-1VUU	CFT24-1VR	CFT24-1VUUR														46 550	92 020	49 500	3 000					
30	0 -0.021	CFT30	CFT30UU	CFT30R	CFT30UUR	80	35	30	M30×1.5	32	100	63	15	1	Rc1/8	4	1	46	45 370	85 060	73 700	5 000	52 600	14 900	450	1 870	
		CFT30V	CFT30VUU	CFT30VR	CFT30VUUR														67 620	144 060	73 700	2 200					
30	0 -0.021	CFT30-1	CFT30-1UU	CFT30-1R	CFT30-1UUR	85	35	30	M30×1.5	32	100	63	15	1	Rc1/8	4	1	46	45 370	85 060	73 700	5 000	56 000	56 000	450	2 030	
		CFT30-1V	CFT30-1VUU	CFT30-1VR	CFT30-1VUUR														67 620	144 060	73 700	2 200					
30	0 -0.021	CFT30-2	CFT30-2UU	CFT30-2R	CFT30-2UUR	90	35	30	M30×1.5	32	100	63	15	1	Rc1/8	4	1	46	45 370	85 060	73 700	5 000	59 300	59 300	450	2 220	
		CFT30-2V	CFT30-2VUU	CFT30-2VR	CFT30-2VUUR														67 620	144 060	73 700	2 200					

\* Without seals, suitable for grease lubrication. In case of oil lubrication, up to 130% of this value shall be permissible, and 70% of this value shall apply for types with seals.

### OUTER RINGS TOLERANCE (μm)

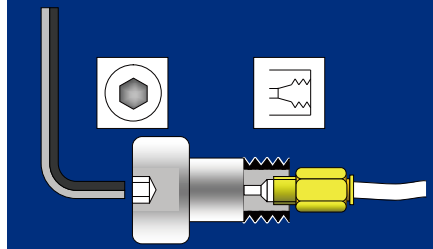
TYPE	Cylindrical outer ring	Crowned outer ring
CF6	0/-8	0/-50
CF8,CF10,CF10-1,CF12	0/-9	0/-50
CF12-1,CF16,CF18,CF20-1	0/-11	0/-50
CF20,CF24,CF24-1,CF30	0/-13	0/-50
CF30-1,CF30-2	0/-15	0/-50

### ACCESSORIES

TYPE	
All types	NUT Attached

# CAM FOLLOWERS

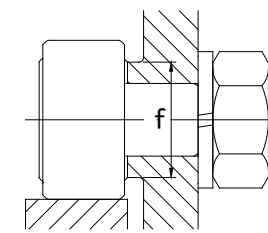
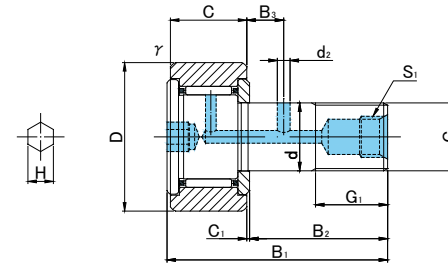
TAP HOLE FOR PIPING  
HEXAGON SOCKET ON STUD HEAD



CFT..A



CFT..VA



## CFT..A TYPE

Prepacked Grease

Stud diameter (mm)	h7 tolerance	Designation				Dimensions (mm)															Basic dynamic load rating Cr N	Basic static load rating Cor N	Largest permissible load N	Limiting speed * rpm	Track load capacity		Max tightening torque N·m	Mass g (approx)
		Cylindrical outer ring		Crowned outer ring R500(CF12~CF18) R1000(CF20≤)		D	C	d	G	G1	B1	B2	B3	C1	S1	d2	H	r <sub>s</sub> min	f min	Cylindrical outer ring N					Crowned outer ring N			
		Without seals	With seals	Without seals	With seals																							
12	0 -0.018	CFT12A	CFT12UUA	CFT12RA	CFT12UURA	30	14	12	M12×1.5	13	40	25	6	0.6	M6×0.75	3	6	0.6	20	7 940	9 800	9 800	14 000	7 060	2 450	22	95	
		CFT12VA	CFT12VUUA	CFT12VRA	CFT12VUURA															13 430	19 700	11 270	6 000					
12	0 -0.018	CFT12-1A	CFT12-1UUA	CFT12-1RA	CFT12-1UURA	32	14	12	M12×1.5	13	40	25	6	0.6	M6×0.75	3	6	0.6	20	7 940	9 800	9 800	14 000	7 450	2 740	22	105	
		CFT12-1VA	CFT12-1VUUA	CFT12-1VRA	CFT12-1VUURA															13 430	19 700	11 270	6 000					
16	0 -0.018	CFT16A	CFT16UUA	CFT16RA	CFT16UURA	35	18	16	M16×1.5	17	52	32.5	8	0.8	Rc1/8	3	6	0.6	24	12 050	18 330	18 330	10 000	11 200	3 140	58	170	
		CFT16VA	CFT16VUUA	CFT16VRA	CFT16VUURA															20 680	37 630	19 800	4 500					
18	0 -0.018	CFT18A	CFT18UUA	CFT18RA	CFT18UURA	40	20	18	M18×1.5	19	58	36.5	8	0.8	Rc1/8	3	6	1	26	14 700	25 200	25 200	8 500	14 400	3 720	87	250	
		CFT18VA	CFT18VUUA	CFT18VRA	CFT18VUURA															25 280	51 350	26 560	3 500					
20	0 -0.021	CFT20A	CFT20UUA	CFT20RA	CFT20UURA	52	24	20	M20×1.5	21	66	40.5	9	0.8	Rc1/8	4	8	1	36	20 680	34 600	32 140	7 000	23 200	8 230	120	460	
		CFT20VA	CFT20VUUA	CFT20VRA	CFT20VUURA															33 120	64 480	32 140	3 500					
20	0 -0.021	CFT20-1A	CFT20-1UUA	CFT20-1RA	CFT20-1UURA	47	24	20	M20×1.5	21	66	40.5	9	0.8	Rc1/8	4	8	1	36	20 680	34 600	32 140	7 000	21 000	7 150	120	385	
		CFT20-1VA	CFT20-1VUUA	CFT20-1VRA	CFT20-1VUURA															33 120	64 480	32 140	3 500					
24	0 -0.021	CFT24A	CFT24UUA	CFT24RA	CFT24UURA	62	29	24	M24×1.5	25	80	49.5	11	0.8	Rc1/8	4	8	1	40	30 480	52 630	49 500	6 500	34 200	10 500	220	815	
		CFT24VA	CFT24VUUA	CFT24VRA	CFT24VUURA															46 550	92 020	49 500	3 000					
24	0 -0.021	CFT24-1A	CFT24-1UUA	CFT24-1RA	CFT24-1UURA	72	29	24	M24×1.5	25	80	49.5	11	0.8	Rc1/8	4	8	1	40	30 480	52 630	49 500	6 500	39 800	12 900	220	1 140	
		CFT24-1VA	CFT24-1VUUA	CFT24-1VRA	CFT24-1VUURA															46 550	92 020	49 500	3 000					
30	0 -0.021	CFT30A	CFT30UUA	CFT30RA	CFT30UURA	80	35	30	M30×1.5	32	100	63	15	1	Rc1/8	4	8	1	46	45 370	85 060	73 700	5 000	52 600	14 900	450	1 870	
		CFT30VA	CFT30VUUA	CFT30VRA	CFT30VUURA															67 620	144 060	73 700	2 200					
30	0 -0.021	CFT30-1A	CFT30-1UUA	CFT30-1RA	CFT30-1UURA	85	35	30	M30×1.5	32	100	63	15	1	Rc1/8	4	8	1	46	45 370	85 060	73 700	5 000	56 000	56 000	450	2 030	
		CFT30-1VA	CFT30-1VUUA	CFT30-1VRA	CFT30-1VUURA															67 620	144 060	73 700	2 200					
30	0 -0.021	CFT30-2A	CFT30-2UUA	CFT30-2RA	CFT30-2UURA	90	35	30	M30×1.5	32	100	63	15	1	Rc1/8	4	8	1	46	45 370	85 060	73 700	5 000	59 300	59 300	450	2 220	
		CFT30-2VA	CFT30-2VUUA	CFT30-2VRA	CFT30-2VUURA															67 620	144 060	73 700	2 200					

\* Without seals, suitable for grease lubrication. In case of oil lubrication, up to 130% of this value shall be permissible, and 70% of this value shall apply for types with seals.

### OUTER RINGS TOLERANCE

TYPE	Cylindrical outer ring	Crowned outer ring
CF12	0/-9	0/-50
CF12-1,CF16,CF18,CF20-1	0/-11	0/-50
CF20,CF24,CF24-1,CF30	0/-13	0/-50
CF30-1,CF30-2	0/-15	0/-50

### ACCESSORIES

TYPE	
All types	NUT Attached