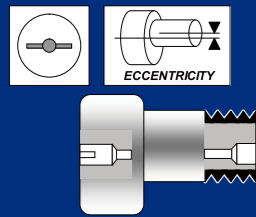


# CAM FOLLOWERS

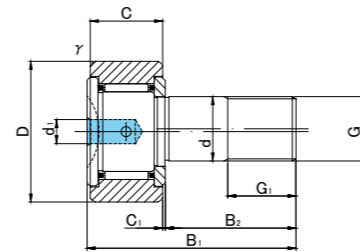
SOLID ECCENTRIC TYPE  
SCREWDRIVER SLOT HEAD



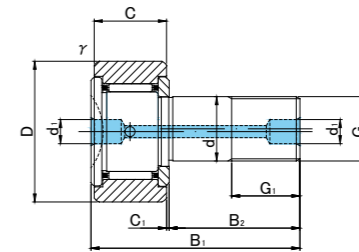
CFH



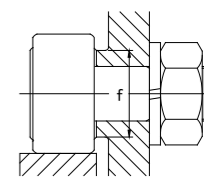
CFH.V



CFH5(V)~CFH10-1(V)



CFH12(V)~CFH16(V)



## CFH TYPE

Prepacked Grease

Stud diameter (mm)	Designation	Dimensions (mm)															Basic dynamic load rating	Basic static load rating	Largest permissible load	Limiting speed *	Track load capacity		Max tightening torque	Mass		
		Cylindrical outer ring				Crowned outer ring R250(CF5) R500 (CF6 ~ CF16)				Eccentricity											Cylindrical outer ring N	Crowned outer ring N			N·m	g (approx)
		Without seals	With seals	Without seals	With seals	D	C	d	G	G1	B1	B2	C1	d1	r <sub>s</sub> min	e										
5	CFH 5	CFH 5UU	CFH 5R	CFH 5UUR	13	9	5	M5×0.8	7.5	23	13	0.5	3.1	0.3	0.2	9.7	3 140	2 770	1 420	29 000	2 250	780	2	10.5		
	CFH 5V	CFH 5VUU	CFH 5VR	CFH 5VUUR													5,100	5,500	1 420	11,600						
6	CFH 6	CFH 6UU	CFH 6R	CFH 6UUR	16	11	6	M6×1	8	28	16	0.6	4	0.3	0.25	11	3 630	3 630	2 110	25 000	3 430	1 080	3	18.5		
	CFH 6V	CFH 6VUU	CFH 6VR	CFH 6VUUR													6 960	8 530	2 110	12 000						
8	CFH 8	CFH 8UU	CFH 8R	CFH 8UUR	19	11	8	M8×1.25	10	32	20	0.6	4	0.3	0.25	13	4 310	4 710	4 710	20 000	4 020	1 370	8	28.5		
	CFH 8V	CFH 8VUU	CFH 8VR	CFH 8VUUR													8 130	11 170	4 710	9 000						
10	CFH10	CFH10UU	CFH10R	CFH10UUR	22	12	10	M10×1.25	12	36	23	0.6	4	0.3	0.3	15	5 390	6 860	6 860	17 000	4 700	1 670	15	45		
	CFH10V	CFH10VUU	CFH10VR	CFH10VUUR													9 510	14 500	7 450	7 500						
10	CFH10-1	CFH10-1UU	CFH10-1R	CFH10-1UUR	26	12	10	M10×1.25	12	36	23	0.6	4	0.3	0.3	15	5 390	6 860	6 860	17 000	5 490	2 060	15	60		
	CFH10-1V	CFH10-1VUU	CFH10-1VR	CFH10-1VUUR													9 510	14 500	7 450	7 500						
12	CFH12	CFH12UU	CFH12R	CFH12UUR	30	14	12	M12×1.5	13	40	25	0.6	6	0.6	0.4	20	7 940	9 800	9 800	14 000	7 060	2 450	22	95		
	CFH12V	CFH12VUU	CFH12VR	CFH12VUUR													13 430	19 700	11 270	6 000						
12	CFH12-1	CFH12-1UU	CFH12-1R	CFH12-1UUR	32	14	12	M12×1.5	13	40	25	0.6	6	0.6	0.4	20	7 940	9 800	9 800	14 000	7 450	2 740	22	105		
	CFH12-1V	CFH12-1VUU	CFH12-1VR	CFH12-1VUUR													13 430	19 700	11 270	6 000						
16	CFH16	CFH16UU	CFH16R	CFH16UUR	35	18	16	M16×1.5	17	52	32.5	0.8	6	0.6	0.5	24	12 050	18 330	18 330	10 000	11 200	3 140	58	170		
	CFH16V	CFH16VUU	CFH16VR	CFH16VUUR													20 680	37 630	19 800	4 500						

\* Without seals, suitable for grease lubrication. In case of oil lubrication, up to 130% of this value shall be permissible, and 70% of this value shall apply for types with seals.

### OUTER RINGS TOLERANCE (μm)

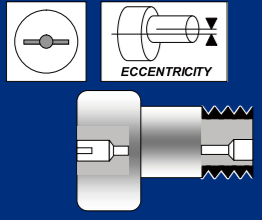
TYPE	Cylindrical outer ring	Crowned outer ring
CF5,CF6	0/-8	0/-50
CF8,CF10,CF10-1,CF12	0/-9	0/-50
CF12-1,CF16,CF18,CF20-1	0/-11	0/-50
CF20,CF24,CF24-1,CF30	0/-13	0/-50
CF30-1,CF30-2	0/-15	0/-50

### ACCESSORIES

TYPE	STOP PLUG	RESIN PLUG	NUT
CF5	—	—	Attached
CF6/CF8/CF10/CF10-1	—	φ 4 Attached	Attached
CF12/CF12-1/CF16/CF18	φ 6 Attached	φ 6 Attached	Attached
CF20/CF20-1/CF24/CF24-1/CF30/CF30-1/CF30-2	φ 8 Attached	φ 8 Attached	Attached

# CAM FOLLOWERS

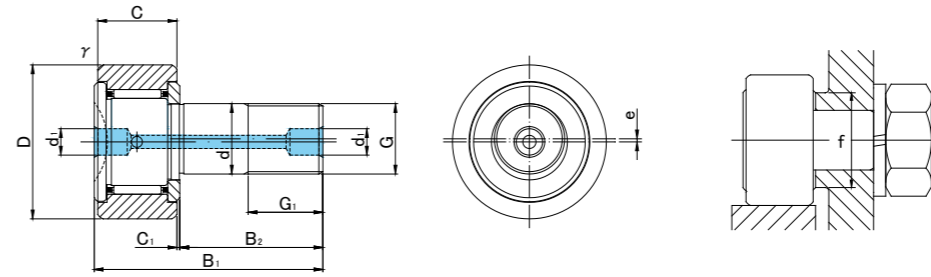
SOLID ECCENTRIC TYPE  
SCREWDRIWER SLOT HEAD



CFH



CFH.V



## CFH TYPE

Prepacked Grease

Stud diameter (mm)	h7 tolerance	Designation				Dimensions (mm)											Basic dynamic load rating Cr N	Basic static load rating Cor N	Largest permissible load N	Limiting speed * rpm	Track load capacity		Max tightening torque N·m	Mass g (approx)	
		Cylindrical outer ring		Crowned outer ring R500(CF18) R1000(CF20 ≤)		D	C	d	G	G1	B1	B2	C1	d1	r min	e					f min	Cylindrical outer ring N			Crowned outer ring N
		Without seals	With seals	Without seals	With seals																				
18	0 -0.018	CFH18	CFH18UU	CFH18R	CFH18UUR	40	20	18	M18×1.5	19	58	36.5	0.8	6	1	0.6	26	14 700	25 200	25 200	8 500	14 400	3 720	87	250
		CFH18V	CFH18VUU	CFH18VR	CFH18VUUR													25 280	51 350	26 560	3 500				
20	0 -0.021	CFH20	CFH20UU	CFH20R	CFH20UUR	52	24	20	M20×1.5	21	66	40.5	0.8	8	1	0.7	36	20 680	34 600	32 140	7 000	23 200	8 230	120	460
		CFH20V	CFH20VUU	CFH20VR	CFH20VUUR													33 120	64 480	32 140	3 500				
20	0 -0.021	CFH20-1	CFH20-1UU	CFH20-1R	CFH20-1UUR	47	24	20	M20×1.5	21	66	40.5	0.8	8	1	0.7	36	20 680	34 600	32 140	7 000	21 000	7 150	120	385
		CFH20-1V	CFH20-1VUU	CFH20-1VR	CFH20-1VUUR													33 120	64 480	32 140	3 500				
24	0 -0.021	CFH24	CFH24UU	CFH24R	CFH24UUR	62	29	24	M24×1.5	25	80	49.5	0.8	8	1	0.8	40	30 480	52 630	49 500	6 500	34 200	10 500	220	815
		CFH24V	CFH24VUU	CFH24VR	CFH24VUUR													46 550	92 020	49 500	3 000				
24	0 -0.021	CFH24-1	CFH24-1UU	CFH24-1R	CFH24-1UUR	72	29	24	M24×1.5	25	80	49.5	0.8	8	1	0.8	40	30 480	52 630	49 500	6 500	39 800	12 900	220	1 140
		CFH24-1V	CFH24-1VUU	CFH24-1VR	CFH24-1VUUR													46 550	92 020	49 500	3 000				
30	0 -0.021	CFH30	CFH30UU	CFH30R	CFH30UUR	80	35	30	M30×1.5	32	100	63	1	8	1	1	46	45 370	85 060	73 700	5 000	52 600	14 900	450	1 870
		CFH30V	CFH30VUU	CFH30VR	CFH30VUUR													67 620	144 060	73 700	2 200				
30	0 -0.021	CFH30-1	CFH30-1UU	CFH30-1R	CFH30-1UUR	85	35	30	M30×1.5	32	100	63	1	8	1	1	46	45 370	85 060	73 700	5 000	56 000	16 100	450	2 030
		CFH30-1V	CFH30-1VUU	CFH30-1VR	CFH30-1VUUR													67 620	144 060	73 700	2 200				
30	0 -0.021	CFH30-2	CFH30-2UU	CFH30-2R	CFH30-2UUR	90	35	30	M30×1.5	32	100	63	1	8	1	1	46	45 370	85 060	73 700	5 000	59 300	17 300	450	2 220
		CFH30-2V	CFH30-2VUU	CFH30-2VR	CFH30-2VUUR													67 620	144 060	73 700	2 200				

\* Without seals, suitable for grease lubrication. In case of oil lubrication, up to 130% of this value shall be permissible, and 70% of this value shall apply for types with seals.

### OUTER RINGS TOLERANCE (µm)

TYPE	Cylindrical outer ring	Crowned outer ring
CF5,CF6	0/-8	0/-50
CF8,CF10,CF10-1,CF12	0/-9	0/-50
CF12-1,CF16,CF18,CF20-1	0/-11	0/-50
CF20,CF24,CF24-1,CF30	0/-13	0/-50
CF30-1,CF30-2	0/-15	0/-50

### ACCESSORIES

TYPE	STOP PLUG	RESIN PLUG	NUT
CF5	—	—	Attached
CF6/CF8/CF10/CF10-1	—	φ 4 Attached	Attached
CF12/CF12-1/CF16/CF18	φ 6 Attached	φ 6 Attached	Attached
CF20/CF20-1/CF24/CF24-1/CF30/CF30-1/CF30-2	φ 8 Attached	φ 8 Attached	Attached