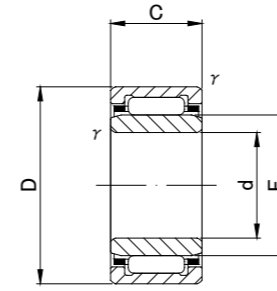
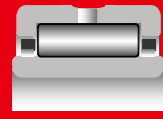
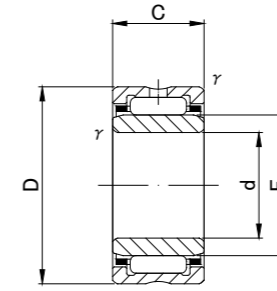


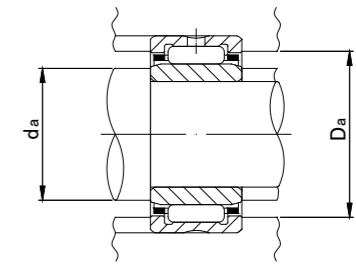
MACHINED RING NEEDLE ROLLER BEARINGS WITH INNER RING



NKI(d ≤ 8)



NA49,NA59,NA69(d ≤ 30),NKI

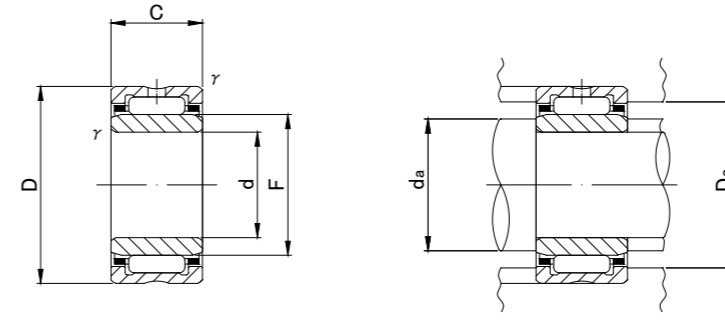


■ NA49,NA59,NA69,NA48,NKI TYPE

Shaft Diameter (mm)	Designation					Dimensions (mm)						Standard mounting dimensions (mm)			Basic dynamic load rating	Basic static load rating	Limiting speed*	Mass	Usable bearing designation	
	NA 49	NA 59	NA 69	NA48	NKI	d	D	C	r/s min	F	da		Da MAX	Cr N	Cor N	rpm	g (approx)	OUTER RING	INNER RING	
											MIN	MAX								
5	NA495	—	—	—	—	5	13	10	0.15	7	6.2	6.7	11.8	2 960	2 690	34 000	7.3	RNA495	IR5710	
	—	—	—	—	NKI 5/12	5 ⁰ _{-0.008}	15	12	0.3	8	7	7.7	13	5 100	4 700	32 000	11.9	NK8/12	IR5812	
	—	—	—	—	NKI 5/16	5	15	16	0.3	8	7	7.7	13	7 100	7 300	32 000	16.7	NK8/16	IR5816	
6	NA 496	—	—	—	—	6	15	10	0.15	8	7.2	7.7	13.8	3 900	3 400	32 000	9.1	RNA496	IR6810	
	—	—	—	—	NKI 6/12	6 ⁰ _{-0.008}	16	12	0.3	9	8	8.7	14	5 500	5 300	30 000	13	NK9/12	IR6912	
	—	—	—	—	NKI 6/16	6	16	16	0.3	9	8	8.7	14	7 600	8 200	30 000	17.5	NK9/16	IR6916	
7	NA 497	—	—	—	—	7	17	10	0.15	9	8.2	8.7	15.8	4 500	3 600	30 000	11.2	RNA497	IR7910	
	—	—	—	—	NKI 7/12	7 ⁰ _{-0.008}	17	12	0.3	10	9	9.7	15	5 900	6 000	28 000	14.3	NK10/12	IR71012	
	—	—	—	—	NKI 7/16	7	17	16	0.3	10	9	9.7	15	8 200	9 200	28 000	19.2	NK10/16	IR71016	
8	NA 498	—	—	—	—	8 ⁰ _{-0.008}	19	11	0.2	10	9.2	9.7	17.4	6 200	5 000	28 000	15	RNA498	IR81011	
9	—	—	—	—	NKI 9/12	9	19	12	0.3	12	11	11.5	17	6 600	7 300	26 000	16.7	NK12/12	IR91212	
	—	—	—	—	NKI 9/16	9 ⁰ _{-0.008}	19	16	0.3	12	11	11.5	17	9 200	11 200	26 000	22.5	NK12/16	IR91216	
	NA 499	—	—	—	—	9	20	11	0.3	12	11	11.5	18	6 600	6 300	26 000	16.7	RNA499	IR91211	
10	NA 4900	—	—	—	—	10	22	13	0.3	14	12	13	20	9 200	10 100	24 000	24	RNA4900	IR101413	
	—	—	—	—	NKI 10/16	10 ⁰ _{-0.008}	22	16	0.3	14	12	13	20	11 800	13 700	24 000	30	NK14/16	IR101416	
	—	—	—	—	NKI 10/20	10	22	20	0.3	14	12	13	20	14 800	18 500	24 000	38	NK14/20	IR101420	
12	NA 4901	—	—	—	—	12	24	13	0.3	16	14	15	22	9 700	11 100	23 000	26.5	RNA4901	IR121613	
	—	—	—	—	NKI 12/16	12 ⁰ _{-0.008}	24	16	0.3	16	14	15	22	12 300	15 100	23 000	33.5	NK16/16	IR121616	
	—	—	—	—	NKI 12/20	12	24	20	0.3	16	14	15	22	15 600	20 400	23 000	42.5	NK16/20	IR121620	
	—	—	NA 6901	—	—	12	24	22	0.3	16	14	15	22	17 100	23 000	23 000	44.5	RNA6901	IR121622	

* Suitable for oil lubrication. In case of grease lubrication, down to 60% of this value.

MACHINED RING NEEDLE ROLLER BEARINGS WITH INNER RING



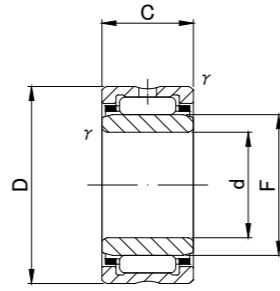
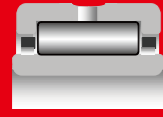
NA49,NA59,NA69(d ≤ 30),NKI

■ NA49,NA59,NA69,NA48,NKI TYPE

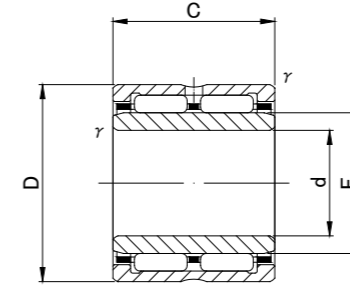
Shaft Diameter (mm)	Designation					Dimensions (mm)						Standard mounting dimensions (mm)		Basic dynamic load rating	Basic static load rating	Limiting speed*	Mass	Usable bearing designation	
	NA 49	NA 59	NA 69	NA48	NKI	d	D	C	f's min	F	da		Da	Cr N	Cor N	rpm	g (approx)	OUTER RING	INNER RING
											MIN	MAX							
15	—	—	—	—	NKI 15/16	15	27	16	0.3	19	17	18	25	14 000	18 700	21 000	39.5	NK19/16	IR151916
	—	—	—	—	NKI 15/20	15	27	20	0.3	19	17	18	25	17 700	25 300	21 000	50	NK19/20	IR151920
	NA 4902	—	—	—	—	15 ⁰ _{-0.008}	28	13	0.3	20	17	19	26	10 900	13 800	20 000	35	RNA4902	IR152013
	—	NA 5902	—	—	—	15	28	18	0.3	20	17	19	26	15 700	22 100	20 000	52	RNA5902	IR152018
	—	—	NA 6902	—	—	15	28	23	0.3	20	17	19	26	19 300	28 700	20 000	61	RNA6902	IR152023
17	—	—	—	—	NKI 17/16	17	29	16	0.3	21	19	20	27	14 400	20 000	19 000	43.5	NK21/16	IR172116
	—	—	—	—	NKI 17/20	17	29	20	0.3	21	19	20	27	18 200	27 100	19 000	54	NK21/20	IR172120
	NA 4903	—	—	—	—	17 ⁰ _{-0.008}	30	13	0.3	22	19	21	28	11 800	15 600	18 000	39	RNA4903	IR172213
	—	NA 5903	—	—	—	17	30	18	0.3	22	19	21	28	16 900	24 900	18 000	56	RNA5903	IR172218
	—	—	NA 6903	—	—	17	30	23	0.3	22	19	21	28	20 800	32 500	18 000	67	RNA6903	IR172223
20	—	—	—	—	NKI 20/16	20	32	16	0.3	24	22	23	30	15 300	22 600	17 000	48.5	NK24/16	IR202416
	—	—	—	—	NKI 20/20	20	32	20	0.3	24	22	23	30	19 400	30 500	17 000	61	NK24/20	IR202420
	NA 4904	—	—	—	—	20 ⁰ _{-0.010}	37	17	0.3	25	22	24	35	21 000	25 000	16 000	78.5	RNA4904	IR202517
	—	NA 5904	—	—	—	20	37	23	0.3	25	22	24	35	29 400	38 600	16 000	115	RNA5904	IR202523
	—	—	NA 6904	—	—	20	37	30	0.3	25	22	24	35	35 400	48 800	16 000	136	RNA6904	IR202530
22	—	—	—	—	NKI 22/16	22	34	16	0.3	26	24	25	32	16 300	24 900	15 000	52	NK26/16	IR222616
	—	—	—	—	NKI 22/20	22	34	20	0.3	26	24	25	32	20 600	33 700	15 000	67.5	NK26/20	IR222620
	NA 49/22	—	—	—	—	22 ⁰ _{-0.010}	39	17	0.3	28	24	27	37	21 400	28 800	14 000	87	RNA49/22	IR222817
	—	NA 59/22	—	—	—	22	39	23	0.3	28	24	27	37	29 800	44 400	14 000	134	RNA59/22	IR222823
	—	—	NA 69/22	—	—	22	39	30	0.3	28	24	27	37	36 300	56 900	14 000	152	RNA69/22	IR222830
25	—	—	—	—	NKI 25/20	25	38	20	0.3	29	27	28	36	21 600	37 200	14 000	82	NK29/20	IR252920
	—	—	—	—	NKI 25/30	25	38	30	0.3	29	27	28	36	30 900	59 000	14 000	123	NK29/30	IR252930
	NA 4905	—	—	—	—	25 ⁰ _{-0.010}	42	17	0.3	30	27	29	40	23 700	30 700	13 000	92.5	RNA4905	IR253017
	—	NA 5905	—	—	—	25	42	23	0.3	30	27	29	40	33 200	47 500	13 000	139	RNA5905	IR253023
	—	—	NA 6905	—	—	25	42	30	0.3	30	27	29	40	42 100	64 200	13 000	160	RNA6905	IR253030
28	—	—	—	—	NKI 28/20	28	42	20	0.3	32	30	31	40	25 700	42 200	13 000	96.5	NK32/20	IR283220
	—	—	—	—	NKI 28/30	28	42	30	0.3	32	30	31	40	36 900	67 100	13 000	145	NK32/30	IR283230
	NA 49/28	—	—	—	—	28 ⁰ _{-0.010}	45	17	0.3	32	30	31	43	24 500	32 700	13 000	101	RNA49/28	IR283217
	—	NA 59/28	—	—	—	28	45	23	0.3	32	30	31	43	34 300	50 500	13 000	142	RNA59/28	IR283223
	—	—	NA 69/28	—	—	28	45	30	0.3	32	30	31	43	41 800	64 700	13 000	176	RNA69/28	IR283230
30	—	—	—	—	NKI 30/20	30	45	20	0.3	35	32	34	43	27 000	46 200	11 000	112	NK35/20	IR303520
	—	—	—	—	NKI 30/30	30	45	30	0.3	35	32	34	43	38 600	73 500	11 000	171	NK35/30	IR303530
	NA 4906	—	—	—	—	30 ⁰ _{-0.010}	47	17	0.3	35	32	34	45	25 200	34 700	11 000	106	RNA4906	IR303517
	—	NA 5906	—	—	—	30	47	23	0.3	35	32	34	45	35 200	53 700	11 000	152	RNA5906	IR303523
	—	—	NA 6906	—	—	30	47	30	0.3	35	32	34	45	43 100	69 000	11 000	184	RNA6906	IR303530

* Suitable for oil lubrication. In case of grease lubrication, down to 60% of this value.

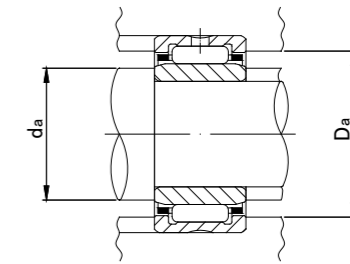
MACHINED RING NEEDLE ROLLER BEARINGS WITH INNER RING



NA49,NA59,NA69(d ≤ 30),NKI



NA69

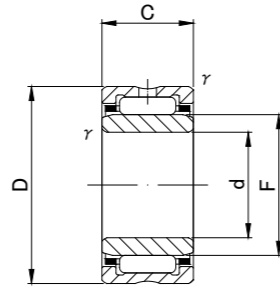
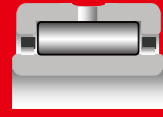


NA49,NA59,NA69,NA48,NKI TYPE

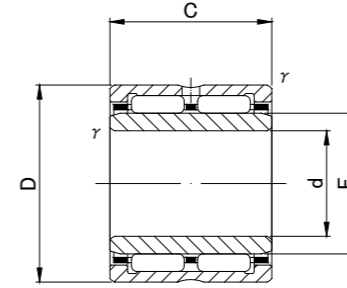
Shaft Diameter (mm)	Designation					Dimensions (mm)						Standard mounting dimensions (mm)		Basic dynamic load rating	Basic static load rating	Limiting speed*	Mass	Usable bearing designation	
	NA 49	NA 59	NA 69	NA48	NKI	d	D	C	r/s min	F	da		D _a MAX	C _r N	C _{or} N	rpm	g (approx)	OUTER RING	INNER RING
											MIN	MAX							
32	—	—	—	—	NKI 32/20	32	47	20	0.3	37	34	36	45	28 200	50 100	11 000	121	NK37/20	IR323720
	—	—	—	—	NKI 32/30	32	47	30	0.3	37	34	36	45	40 500	79 800	11 000	180	NK37/30	IR323730
	NA 49/32	—	—	—	—	32 ⁰ _{-0.012}	52	20	0.6	40	36	39	48	31 300	47 900	10 000	165	RNA49/32	IR324020
	—	NA 59/32	—	—	—	32	52	27	0.6	40	36	39	48	41 900	69 900	10 000	241	RNA59/32	IR324027
	—	—	NA 69/32	—	—	32	52	36	0.6	40	36	39	48	53 500	95 700	10 000	295	RNA69/32	IR324036
35	—	—	—	—	NKI 35/20	35	50	20	0.3	40	37	39	48	29 400	54 100	10 000	129	NK40/20	IR354020
	—	—	—	—	NKI 35/30	35	50	30	0.3	40	37	39	48	42 300	86 100	10 000	192	NK40/30	IR354030
	NA 4907	—	—	—	—	35 ⁰ _{-0.012}	55	20	0.6	42	39	41	51	32 000	50 200	9 500	178	RNA4907	IR354220
	—	NA 5907	—	—	—	35	55	27	0.6	42	39	41	51	42 900	73 200	9 500	256	RNA5907	IR354227
	—	—	NA 6907	—	—	35	55	36	0.6	42	39	41	51	54 800	100 000	9 500	320	RNA6907	IR354236
38	—	—	—	—	NKI 38/20	38 ⁰ _{-0.012}	53	20	0.3	43	40	42	51	30 500	58 100	9 500	136	NK43/20	IR384320
	—	—	—	—	NKI 38/30	38	53	30	0.3	43	40	42	51	43 700	92 500	9 500	205	NK43/30	IR384330
40	—	—	—	—	NKI 40/20	40	55	20	0.3	45	42	44	53	31 100	60 100	9 000	143	NK45/20	IR404520
	—	—	—	—	NKI 40/30	40	55	30	0.3	45	42	44	53	44 500	95 700	9 000	215	NK45/30	IR404530
	NA 4908	—	—	—	—	40 ⁰ _{-0.012}	62	22	0.6	48	44	47	58	41 600	67 400	8 500	245	RNA4908	IR404822
	—	NA 5908	—	—	—	40	62	30	0.6	48	44	47	58	58 000	103 000	8 500	348	RNA5908	IR404830
	—	—	NA 6908	—	—	40	62	40	0.6	48	44	47	58	71 300	134 400	8 500	440	RNA6908	IR404840
42	—	—	—	—	NKI 42/20	42 ⁰ _{-0.012}	57	20	0.3	47	44	46	55	31 500	62 300	8 500	149	NK47/20	IR424720
	—	—	—	—	NKI 42/30	42	57	30	0.3	47	44	46	55	45 200	99 000	8 500	225	NK47/30	IR424730
45	—	—	—	—	NKI 45/25	45	62	25	0.6	50	49	49.5	58	43 000	85 200	8 000	230	NK50/25	IR455025
	—	—	—	—	NKI 45/35	45	62	35	0.6	50	49	49.5	58	58 100	125 500	8 000	320	NK50/35	IR455035
	NA 4909	—	—	—	—	45 ⁰ _{-0.012}	68	22	0.6	52	49	51	64	43 500	73 400	7 500	285	RNA4909	IR455222
	—	NA 5909	—	—	—	45	68	30	0.6	52	49	51	64	60 700	112 000	7 500	396	RNA5909	IR455230
	—	—	NA 6909	—	—	45	68	40	0.6	52	49	51	64	74 600	147 100	7 500	520	RNA6909	IR455240
50	—	—	—	—	NKI 50/25	50	68	25	0.6	55	54	54.5	64	45 400	94 100	7 500	270	NK55/25	IR505525
	—	—	—	—	NKI 50/35	50	68	35	0.6	55	54	54.5	64	61 300	138 300	7 500	365	NK55/35	IR505535
	NA 4910	—	—	—	—	50 ⁰ _{-0.012}	72	22	0.6	58	54	57	68	46 200	82 100	7 000	295	RNA4910	IR505822
	—	NA 5910	—	—	—	50	72	30	0.6	58	54	57	68	64 400	126 000	7 000	498	RNA5910	IR505830
	—	—	NA 6910	—	—	50	72	40	0.6	58	54	57	68	79 100	163 800	7 000	530	RNA6910	IR505840

* Suitable for oil lubrication. In case of grease lubrication, down to 60% of this value.

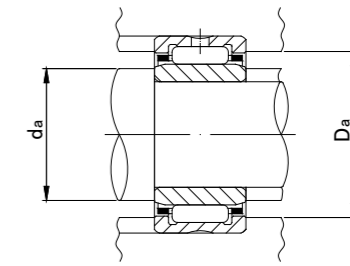
MACHINED RING NEEDLE ROLLER BEARINGS WITH INNER RING



NA49,NA59,NKI



NA69

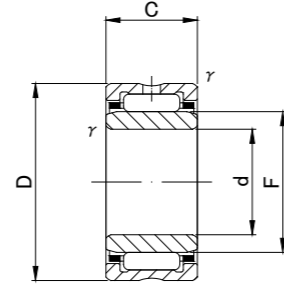
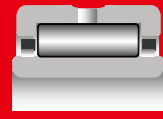


NA49,NA59,NA69,NA48,NKI TYPE

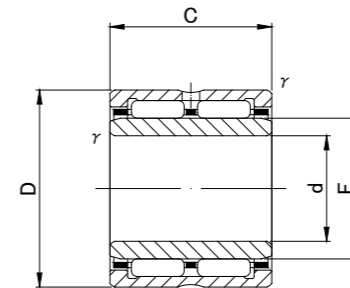
Shaft Diameter (mm)	Designation					Dimensions (mm)						Standard mounting dimensions (mm)		Basic dynamic load rating	Basic static load rating	Limiting speed*	Mass	Usable bearing designation	
	NA 49	NA 59	NA 69	NA48	NKI	d	D	C	r/s min	F	da		Da	Cr N	Cor N	rpm	g (approx)	OUTER RING	INNER RING
											MIN	MAX							
55	—	—	—	—	NKI 55/25	55	72	25	0.6	60	59	59.5	68	47 500	103 000	6 500	275	NK60/25	IR556025
	—	—	—	—	NKI 55/35	55	72	35	0.6	60	59	59.5	68	64 100	151 000	6 500	380	NK60/35	IR556035
	NA 4911	—	—	—	—	55 ⁰ _{-0.015}	80	25	1	63	60	61	75	57 600	97 300	6 500	410	RNA4911	IR556325
	—	NA 5911	—	—	—	55	80	34	1	63	60	61	75	82 600	154 000	6 500	559	RNA5911	IR556334
	—	—	NA 6911	—	—	55	80	45	1	63	60	61	75	99 000	194 200	6 500	730	RNA6911	IR556345
60	—	—	—	—	NKI 60/25	60	82	25	0.6	68	64	66	78	54 800	116 700	6 000	395	NK68/25	IR606825
	—	—	—	—	NKI 60/35	60	82	35	0.6	68	64	66	78	72 100	165 700	6 000	560	NK68/35	IR606835
	NA 4912	—	—	—	—	60 ⁰ _{-0.015}	85	25	1	68	64	66	80	60 100	104 900	6 000	440	RNA4912	IR606825
	—	NA 5912	—	—	—	60	85	34	1	68	65	66	80	86 100	167 000	6 000	614	RNA5912	IR606834
	—	—	NA 6912	—	—	60	85	45	1	68	65	66	80	103 000	210 800	6 000	785	RNA6912	IR606845
65	NA 4913	—	—	—	—	65	90	25	1	72	70	70.5	85	62 800	113 800	5 500	470	RNA4913	IR657225
	—	NA 5913	—	—	—	65 ⁰ _{-0.015}	90	34	1	72	70	70.5	85	89 900	180 000	5 500	655	RNA5913	IR657234
	—	—	—	—	NKI 65/35	65	90	35	0.6	73	69	71	86	80 400	180 400	5 500	710	NK73/35	IR657335
	—	—	NA 6913	—	—	65	90	45	1	72	70	70.5	85	107 900	226 500	5 500	840	RNA6913	IR657245
	—	—	—	—	—	—	—	—	—	—	—	—	—	—	—	—	—	—	—
70	—	—	—	—	NKI 70/25	70	95	25	1	80	75	78	90	59 400	137 300	5 000	540	NK80/25	IR708025
	—	—	—	—	NKI 70/35	70	95	35	1	80	75	78	90	78 100	194 200	5 000	755	NK80/35	IR708035
	NA 4914	—	—	—	—	70 ⁰ _{-0.015}	100	30	1	80	75	78	95	83 200	157 900	5 000	765	RNA4914	IR708030
	—	NA 5914	—	—	—	70	100	40	1	80	75	78	95	112 000	232 000	5 000	1 060	RNA5914	IR708040
	—	—	NA 6914	—	—	70	100	54	1	80	75	78	95	133 400	310 900	5 000	1 400	RNA6914	IR708054
75	—	—	—	—	NKI 75/25	75	105	25	1	85	80	83	100	76 400	145 100	4 500	675	NK85/25	IR758525
	NA 4915	—	—	—	—	75	105	30	1	85	80	83	100	86 200	169 700	4 500	810	RNA4915	IR758530
	—	—	—	—	NKI 75/35	75 ⁰ _{-0.015}	105	35	1	85	80	83	100	102 000	209 900	4 500	945	NK85/35	IR758535
	—	NA 5915	—	—	—	75	105	40	1	85	80	83	100	116 000	249 000	4 500	1 130	RNA5915	IR758540
	—	—	NA 6915	—	—	75	105	54	1	85	80	83	100	138 300	330 500	4 500	1 480	RNA6915	IR758554
80	—	—	—	—	NKI 80/25	80	110	25	1	90	85	88	105	77 400	150 000	4 500	710	NK90/25	IR809025
	NA 4916	—	—	—	—	80	110	30	1	90	85	88	105	87 400	174 600	4 500	855	RNA4916	IR809030
	—	—	—	—	NKI 80/35	80 ⁰ _{-0.015}	110	35	1	90	85	88	105	103 000	216 700	4 500	995	NK90/35	IR809035
	—	NA 5916	—	—	—	80	110	40	1	90	85	88	105	117 000	257 000	4 500	1 150	RNA5916	IR809040
	—	—	NA 6916	—	—	80	110	54	1	90	85	88	105	143 200	350 100	4 500	1 560	RNA6916	IR809054
85	—	—	—	—	NKI 85/26	85	115	26	1	95	90	93	110	79 700	158 900	4 200	775	NK95/26	IR859526
	—	—	—	—	NKI 85/36	85	115	36	1	95	90	93	110	106 900	230 500	4 200	1 080	NK95/36	IR859536
	NA 4917	—	—	—	—	85 ⁰ _{-0.020}	120	35	1.1	100	91.5	98	133.5	109 800	244 200	4 000	1 280	RNA4917	IR8510035
	—	NA 5917	—	—	—	85	120	46	1.1	100	91.5	98	133.5	144 000	346 000	4 000	1 760	RNA5917	IR8510046
	—	—	NA 6917	—	—	85	120	63	1.1	100	91.5	98	133.5	172 600	466 800	4 000	2 340	RNA6917	IR8510063

* Suitable for oil lubrication. In case of grease lubrication, down to 60% of this value.

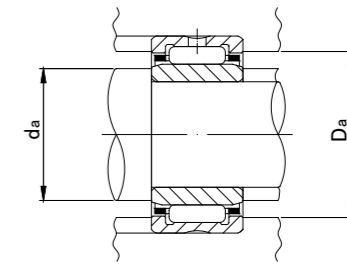
MACHINED RING NEEDLE ROLLER BEARINGS WITH INNER RING



NA49,NA59,NA48,NKI



NA69



■ NA49,NA59,NA69,NA48,NKI TYPE

Shaft Diameter (mm)	Designation					Dimensions (mm)					Standard mounting dimensions (mm)		Basic dynamic load rating	Basic static load rating	Limiting speed*	Mass	Usable bearing designation		
	NA 49	NA 59	NA 69	NA 48	NKI	d	D	C	r/s min	F	da		D _a MAX	C _r N	C _{or} N	rpm	g (approx)	OUTER RING	INNER RING
											MIN	MAX							
90	—	—	—	—	NKI 90/26	90	120	26	1	100	95	98	135	82 500	168 700	4 000	820	NK100/26	IR9010026
	—	—	—	—	NKI 90/36	90	120	36	1	100	95	98	135	109 800	244 200	4 000	1 140	NK100/36	IR9010036
	NA 4918	—	—	—	—	90 ⁰ _{-0.020}	125	35	1.1	105	96.5	103	118.5	112 800	257 900	3 800	1 350	RNA4918	IR9010535
	—	NA 5918	—	—	—	90	125	46	1.1	105	96.5	103	118.5	148 000	365 000	3 800	1 840	RNA5918	IR9010546
	—	—	NA 6918	—	—	90	125	63	1.1	105	96.5	103	118.5	177 500	490 300	3 800	2 460	RNA6918	IR9010563
95	—	—	—	—	NKI 95/26	95	125	26	1	105	100	103	120	84 700	177 500	3 800	860	NK105/26	IR9510526
	—	—	—	—	NKI 95/36	95	125	36	1	105	100	103	120	112 800	257 900	3 800	1 190	NK105/36	IR9510536
	NA 4919	—	—	—	—	95 ⁰ _{-0.020}	130	35	1.1	110	101.5	108	123.5	116 700	270 700	3 600	1 420	RNA4919	IR9511035
	—	NA 5919	—	—	—	95	130	46	1.1	110	101.5	108	123.5	152 000	384 000	3 600	1 980	RNA5919	IR9511046
	—	—	NA 6919	—	—	95	130	63	1.1	110	101.5	108	123.5	182 400	514 800	3 600	2 580	RNA6919	IR9511063
100	—	—	—	—	NKI 100/30	100	130	30	1.1	110	106.5	108	123.5	105 900	239 300	3 600	1 040	NK110/30	IR10011030
	—	—	—	—	NKI 100/40	100 ⁰ _{-0.020}	130	40	1.1	110	106.5	108	123.5	133 400	323 600	3 600	1 380	NK110/40	IR10011040
	NA 4920	—	—	—	—	100	140	40	1.1	115	106.5	113	133.5	145 000	329 000	3 500	1 960	RNA4920	IR10011540
110	—	—	—	NA 4822	—	110 ⁰ _{-0.020}	140	30	1	120	115	118	135	93 000	239 000	3 500	1 200	RNA4822	IR11012030
	NA 4922	—	—	—	—	110	150	40	1.1	125	116.5	123	143.5	152 000	357 000	3 000	2 120	RNA4922	IR11012540
120	—	—	—	NA 4824	—	120 ⁰ _{-0.020}	150	30	1	130	125	128	145	97 000	259 000	3 000	1 300	RNA4824	IR12013030
	NA 4924	—	—	—	—	120	165	45	1.1	135	126.5	133	158.5	187 000	435 000	3 000	2 960	RNA4924	IR12013545
130	—	—	—	NA 4826	—	130 ⁰ _{-0.025}	165	35	1.1	145	136.5	143	158.5	117 000	340 000	3 000	1 960	RNA4826	IR13014535
	NA 4926	—	—	—	—	130	180	50	1.5	150	138	148	172	216 000	540 000	2 500	4 030	RNA4926	IR13015050
140	—	—	—	NA 4828	—	140 ⁰ _{-0.025}	175	35	1.1	155	146.5	153	168.5	121 000	363 000	2 500	2 100	RNA4828	IR14015535
	NA 4928	—	—	—	—	140	190	50	1.5	160	148	158	182	224 000	580 000	2 500	4 290	RNA4928	IR14016050
150	—	—	—	NA 4830	—	150 ⁰ _{-0.025}	190	40	1.1	165	156.5	163	183.5	168 000	446 000	2 500	2 880	RNA4830	IR15016540
160	—	—	—	NA 4832	—	160 ⁰ _{-0.025}	200	40	1.1	175	166.5	173	193.5	173 000	474 000	2 500	3 050	RNA4832	IR16017540

* Suitable for oil lubrication. In case of grease lubrication, down to 60% of this value.