



JNS CO., LTD.
16-4 ENMYOU-CHO KASHIWARA-CITY
OSAKA 582-0027 JAPAN

TEL : (072)977-5100
FAX : (072)977-5205

Product Discontinuation Notice

Jan.17.2014

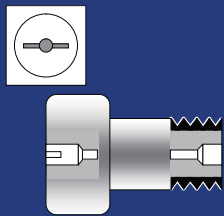
Dear Valued Customer

We would like to inform you that the production of below listed types of JNS cam followers will be discontinued at the end of JUL.2014
Discontinued products will be substituted with the following recommended replacements.

Item number (Cam followers) * ₁ ※stud diameter larger than 12mm	Discontinuation Date	Recommended replacement * ₂
CF/CFH12~30-2 【STEEL】 CF/CFH12M~30-2M 【STAINLESS STEEL】 (screwdriver slot head type)	END OF JUL.2014	CF/CFH12AB~30-2AB 【STEEL】 CF/CFH12MAB~30-2MAB 【STAINLESS STEEL】 (hexagon socket on both stud head and thread sides type)
CF/CFH12B~30-2B 【STEEL】 CF/CFH12MB~30-2MB 【STAINLESS STEEL】 (hexagon socket on thread side type)		

*₁,*₂...Please refer to attached catalogue data for the details.

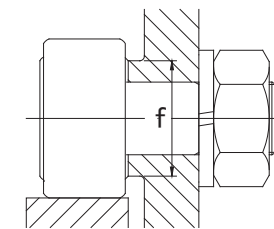
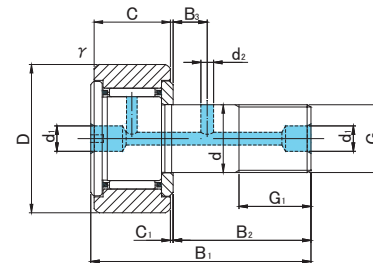
CAM FOLLOWERS SCREWDRIVER SLOT HEAD



CF



CF.V



PRODUCTS TO BE DISCONTINUED

~ END of JUL.2014

Prepacked Grease

CF TYPE

Stud diameter (mm)	h7 tolerance	Designation				Dimensions (mm)											Basic dynamic load rating Cr N	Basic static load rating Cor N	Largest permissible load N	Limiting speed * rpm	Track load capacity		Max tightening torque N-m	Mass g (approx)		
		Cylindrical outer ring		Crowned outer ring R500(CF12 ~ CF18) R1000(CF20 ≤)		D	C	d	G	G1	B1	B2	B3	C1	d1	d2					rs min	f min			Cylindrical outer ring N	Crowned outer ring N
12	0 -0.018	CF12	CF12UU	CF12R	CF12UUR	30	14	12	M12x1.5	13	40	25	6	0.6	6	3	0.6	20	7 940	9 800	9 800	14 000	7 060	2 450	22	95
		CF12V	CF12VUU	CF12VR	CF12VUUR														13 430	19 700	11 270	6 000				
12	0 -0.018	CF12-1	CF12-1UU	CF12-1R	CF12-1UUR	32	14	12	M12x1.5	13	40	25	6	0.6	6	3	0.6	20	7 940	9 800	9 800	14 000	7 450	2 740	22	105
		CF12-1V	CF12-1VUU	CF12-1VR	CF12-1VUUR														13 430	19 700	11 270	6 000				
16	0 -0.018	CF16	CF16UU	CF16R	CF16UUR	35	18	16	M16x1.5	17	52	32.5	8	0.8	6	3	0.6	24	12 050	18 330	18 330	10 000	11 200	3 140	58	170
		CF16V	CF16VUU	CF16VR	CF16VUUR														20 680	37 630	19 800	4 500				
18	0 -0.018	CF18	CF18UU	CF18R	CF18UUR	40	20	18	M18x1.5	19	58	36.5	8	0.8	6	3	1	26	14 700	25 200	25 200	8 500	14 400	3 720	87	250
		CF18V	CF18VUU	CF18VR	CF18VUUR														25 280	51 350	26 560	3 500				
20	0 -0.021	CF20	CF20UU	CF20R	CF20UUR	52	24	20	M20x1.5	21	66	40.5	9	0.8	8	4	1	36	20 680	34 600	32 140	7 000	23 200	8 230	120	460
		CF20V	CF20VUU	CF20VR	CF20VUUR														33 120	64 480	32 140	3 500				
20	0 -0.021	CF20-1	CF20-1UU	CF20-1R	CF20-1UUR	47	24	20	M20x1.5	21	66	40.5	9	0.8	8	4	1	36	20 680	34 600	32 140	7 000	21 000	7 150	120	385
		CF20-1V	CF20-1VUU	CF20-1VR	CF20-1VUUR														33 120	64 480	32 140	3 500				
24	0 -0.021	CF24	CF24UU	CF24R	CF24UUR	62	29	24	M24x1.5	25	80	49.5	11	0.8	8	4	1	40	30 480	52 630	49 500	6 500	34 200	10 500	220	815
		CF24V	CF24VUU	CF24VR	CF24VUUR														46 550	92 020	49 500	3 000				
24	0 -0.021	CF24-1	CF24-1UU	CF24-1R	CF24-1UUR	72	29	24	M24x1.5	25	80	49.5	11	0.8	8	4	1	40	30 480	52 630	49 500	6 500	39 800	12 900	220	1 140
		CF24-1V	CF24-1VUU	CF24-1VR	CF24-1VUUR														46 550	92 020	49 500	3 000				
30	0 -0.021	CF30	CF30UU	CF30R	CF30UUR	80	35	30	M30x1.5	32	100	63	15	1	8	4	1	46	45 370	85 060	73 700	5 000	52 600	14 900	450	1 870
		CF30V	CF30VUU	CF30VR	CF30VUUR														67 620	144 060	73 700	2 200				
30	0 -0.021	CF30-1	CF30-1UU	CF30-1R	CF30-1UUR	85	35	30	M30x1.5	32	100	63	15	1	8	4	1	46	45 370	85 060	73 700	5 000	56 000	16 100	450	2 030
		CF30-1V	CF30-1VUU	CF30-1VR	CF30-1VUUR														67 620	144 060	73 700	2 200				
30	0 -0.021	CF30-2	CF30-2UU	CF30-2R	CF30-2UUR	90	35	30	M30x1.5	32	100	63	15	1	8	4	1	46	45 370	85 060	73 700	5 000	59 300	17 300	450	2 220
		CF30-2V	CF30-2VUU	CF30-2VR	CF30-2VUUR														67 620	144 060	73 700	2 200				

* Without seals, suitable for grease lubrication. In case of oil lubrication, up to 130% of this value shall be permissible, and 70% of this value shall apply for types with seals.

OUTER RINGS TOLERANCE

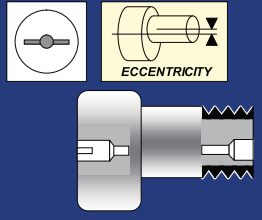
TYPE	Cylindrical outer ring	Crowned outer ring
CF5,CF6	0/-8	0/-50
CF8,CF10,CF10-1,CF12	0/-9	0/-50
CF12-1,CF16,CF18,CF20-1	0/-11	0/-50
CF20,CF24,CF24-1,CF30	0/-13	0/-50
CF30-1,CF30-2	0/-15	0/-50

ACCESSORIES

TYPE	STOP PLUG	RESIN PLUG	NUT
CF5	—	—	Attached
CF6/CF8/CF10/CF10-1	—	φ 4 Attached	Attached
CF12/CF12-1/CF16/CF18	φ 6 Attached	φ 6 Attached	Attached
CF20/CF20-1/CF24/CF24-1/CF30/CF30-1/CF30-2	φ 8 Attached	φ 8 Attached	Attached

CAM FOLLOWERS

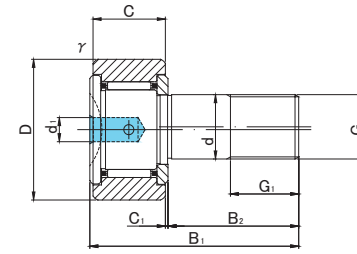
SOLID ECCENTRIC TYPE
SCREWDRIVER SLOT HEAD



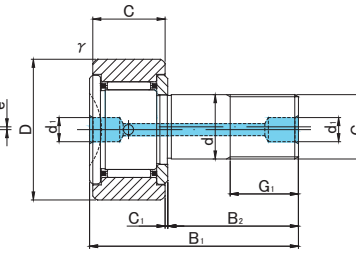
CFH



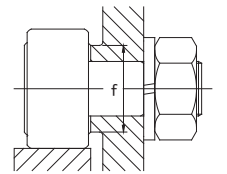
CFH.V



CFH5(V)~CFH10-1(V)



CFH12(V)~CFH16(V)



CFH TYPE

Prepacked Grease

Stud diameter (mm)	h7 tolerance	Designation				Dimensions (mm)												Basic dynamic load rating Cr N	Basic static load rating Cor N	Largest permissible load N	Limiting speed * rpm	Track load capacity		Max tightening torque N·m	Mass g (approx)
		Cylindrical outer ring		Crowned outer ring R250(CF5) R500 (CF6 ~ CF16)		D	C	d	G	G1	B1	B2	C1	d1	rs min	e	f min					Cylindrical outer ring N	Crowned outer ring N		
		Without seals	With seals	Without seals	With seals																				
5	0 -0.012	CFH 5	CFH 5UU	CFH 5R	CFH 5UUR	13	9	5	M5x0.8	7.5	23	13	0.5	3.1	0.3	0.2	9.7	3 140	2 770	1 420	29 000	2 250	530	2	10.5
		CFH 5V	CFH 5VUU	CFH 5VR	CFH 5VUUR													5,100	5,500	1 420	11,600				
6	0 -0.012	CFH 6	CFH 6UU	CFH 6R	CFH 6UUR	16	11	6	M6x1	8	28	16	0.6	4	0.3	0.25	11	3 630	3 630	2 110	25 000	3 430	1 080	3	18.5
		CFH 6V	CFH 6VUU	CFH 6VR	CFH 6VUUR													6 960	8 530	2 110	12 000				
8	0 -0.015	CFH 8	CFH 8UU	CFH 8R	CFH 8UUR	19	11	8	M8x1.25	10	32	20	0.6	4	0.3	0.25	13	4 310	4 710	4 710	20 000	4 020	1 370	8	28.5
		CFH 8V	CFH 8VUU	CFH 8VR	CFH 8VUUR													8 130	11 170	4 710	9 000				
10	0 -0.015	CFH10	CFH10UU	CFH10R	CFH10UUR	22	12	10	M10x1.25	12	36	23	0.6	4	0.3	0.3	15	5 390	6 860	6 860	17 000	4 700	1 670	15	45
		CFH10V	CFH10VUU	CFH10VR	CFH10VUUR													9 510	14 500	7 450	7 500				
10	0 -0.015	CFH10-1	CFH10-1UU	CFH10-1R	CFH10-1UUR	26	12	10	M10x1.25	12	36	23	0.6	4	0.3	0.3	15	5 390	6 860	6 860	17 000	5 490	2 060	15	60
		CFH10-1V	CFH10-1VUU	CFH10-1VR	CFH10-1VUUR													9 510	14 500	7 450	7 500				
12	0 -0.018	CFH12	CFH12UU	CFH12R	CFH12UUR	30	14	12	M12x1.5	13	40	25	0.6	6	0.6	0.4	20	7 940	9 800	9 800	14 000	7 060	2 450	22	95
		CFH12V	CFH12VUU	CFH12VR	CFH12VUUR													13 430	19 700	11 270	6 000				
12	0 -0.018	CFH12-1	CFH12-1UU	CFH12-1R	CFH12-1UUR	32	14	12	M12x1.5	13	40	25	0.6	6	0.6	0.4	20	7 940	9 800	9 800	14 000	7 450	2 740	22	105
		CFH12-1V	CFH12-1VUU	CFH12-1VR	CFH12-1VUUR													13 430	19 700	11 270	6 000				
16	0 -0.018	CFH16	CFH16UU	CFH16R	CFH16UUR	35	18	16	M16x1.5	17	52	32.5	0.8	6	0.6	0.5	24	12 050	18 330	18 330	10 000	11 200	3 140	58	170
		CFH16V	CFH16VUU	CFH16VR	CFH16VUUR													20 680	37 630	19 800	4 500				

PRODUCTS TO BE DISCONTINUED
~ END of JUL.2014

* Without seals, suitable for grease lubrication. In case of oil lubrication, up to 130% of this value shall be permissible, and 70% of this value shall apply for types with seals.

OUTER RINGS TOLERANCE (μm)

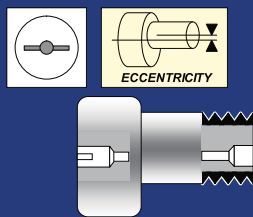
TYPE	Cylindrical outer ring	Crowned outer ring
CF5,CF6	0/-8	0/-50
CF8,CF10,CF10-1,CF12	0/-9	0/-50
CF12-1,CF16,CF18,CF20-1	0/-11	0/-50
CF20,CF24,CF24-1,CF30	0/-13	0/-50
CF30-1,CF30-2	0/-15	0/-50

ACCESSORIES

TYPE	STOP PLUG	RESIN PLUG	NUT
CF5	—	—	Attached
CF6/CF8/CF10/CF10-1	—	φ 4 Attached	Attached
CF12/CF12-1/CF16/CF18	φ 6 Attached	φ 6 Attached	Attached
CF20/CF20-1/CF24/CF24-1/CF30/CF30-1/CF30-2	φ 8 Attached	φ 8 Attached	Attached

CAM FOLLOWERS

SOLID ECCENTRIC TYPE
SCREWDRIVER SLOT HEAD



CFH

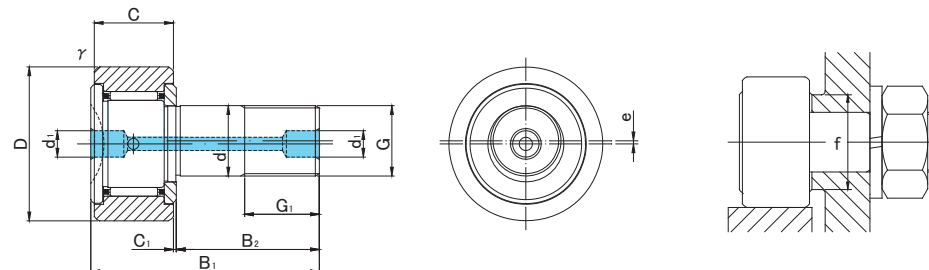


CFH.V

PRODUCTS TO BE DISCONTINUED

~ END of JUL.2014

Prepacked Grease



CFH TYPE

Stud diameter (mm)	h7 tolerance	Designation				Dimensions (mm)												Basic dynamic load rating Cr N	Basic static load rating Cor N	Largest permissible load N	Limiting speed * rpm	Track load capacity		Max tightening torque N·m	Mass g (approx)
		Cylindrical outer ring		Crowned outer ring R500(CF18) R1000(CF20 ≤)		D	C	d	G	G1	B1	B2	C1	d1	r _s min	e	f min					Cylindrical outer ring N	Crowned outer ring N		
		Without seals	With seals	Without seals	With seals																				
18	0 -0.018	CFH18	CFH18UU	CFH18R	CFH18UUR	40	20	18	M18×1.5	19	58	36.5	0.8	6	1	0.6	26	14 700	25 200	25 200	8 500	14 400	3 720	87	250
		CFH18V	CFH18VUU	CFH18VR	CFH18VUUR													25 280	51 350	26 560	3 500				
20	0 -0.021	CFH20	CFH20UU	CFH20R	CFH20UUR	52	24	20	M20×1.5	21	66	40.5	0.8	8	1	0.7	36	20 680	34 600	32 140	7 000	23 200	8 230	120	460
		CFH20V	CFH20VUU	CFH20VR	CFH20VUUR													33 120	64 480	32 140	3 500				
20	0 -0.021	CFH20-1	CFH20-1UU	CFH20-1R	CFH20-1UUR	47	24	20	M20×1.5	21	66	40.5	0.8	8	1	0.7	36	20 680	34 600	32 140	7 000	21 000	7 150	120	385
		CFH20-1V	CFH20-1VUU	CFH20-1VR	CFH20-1VUUR													33 120	64 480	32 140	3 500				
24	0 -0.021	CFH24	CFH24UU	CFH24R	CFH24UUR	62	29	24	M24×1.5	25	80	49.5	0.8	8	1	0.8	40	30 480	52 630	49 500	6 500	34 200	10 500	220	815
		CFH24V	CFH24VUU	CFH24VR	CFH24VUUR													46 550	92 020	49 500	3 000				
24	0 -0.021	CFH24-1	CFH24-1UU	CFH24-1R	CFH24-1UUR	72	29	24	M24×1.5	25	80	49.5	0.8	8	1	0.8	40	30 480	52 630	49 500	6 500	39 800	12 900	220	1 140
		CFH24-1V	CFH24-1VUU	CFH24-1VR	CFH24-1VUUR													46 550	92 020	49 500	3 000				
30	0 -0.021	CFH30	CFH30UU	CFH30R	CFH30UUR	80	35	30	M30×1.5	32	100	63	1	8	1	1	46	45 370	85 060	73 700	5 000	52 600	14 900	450	1 870
		CFH30V	CFH30VUU	CFH30VR	CFH30VUUR													67 620	144 060	73 700	2 200				
30	0 -0.021	CFH30-1	CFH30-1UU	CFH30-1R	CFH30-1UUR	85	35	30	M30×1.5	32	100	63	1	8	1	1	46	45 370	85 060	73 700	5 000	56 000	16 100	450	2 030
		CFH30-1V	CFH30-1VUU	CFH30-1VR	CFH30-1VUUR													67 620	144 060	73 700	2 200				
30	0 -0.021	CFH30-2	CFH30-2UU	CFH30-2R	CFH30-2UUR	90	35	30	M30×1.5	32	100	63	1	8	1	1	46	45 370	85 060	73 700	5 000	59 300	17 300	450	2 220
		CFH30-2V	CFH30-2VUU	CFH30-2VR	CFH30-2VUUR													67 620	144 060	73 700	2 200				

* Without seals, suitable for grease lubrication. In case of oil lubrication, up to 130% of this value shall be permissible, and 70% of this value shall apply for types with seals.

OUTER RINGS TOLERANCE (μm)

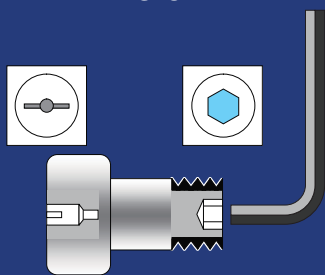
TYPE	Cylindrical outer ring	Crowned outer ring
CF5,CF6	0/-8	0/-50
CF8,CF10,CF10-1,CF12	0/-9	0/-50
CF12-1,CF16,CF18,CF20-1	0/-11	0/-50
CF20,CF24,CF24-1,CF30	0/-13	0/-50
CF30-1,CF30-2	0/-15	0/-50

ACCESSORIES

TYPE	STOP PLUG	RESIN PLUG	NUT
CF5	—	—	Attached
CF6/CF8/CF10/CF10-1	—	φ 4 Attached	Attached
CF12/CF12-1/CF16/CF18	φ 6 Attached	φ 6 Attached	Attached
CF20/CF20-1/CF24/CF24-1/CF30/CF30-1/CF30-2	φ 8 Attached	φ 8 Attached	Attached

CAM FOLLOWERS

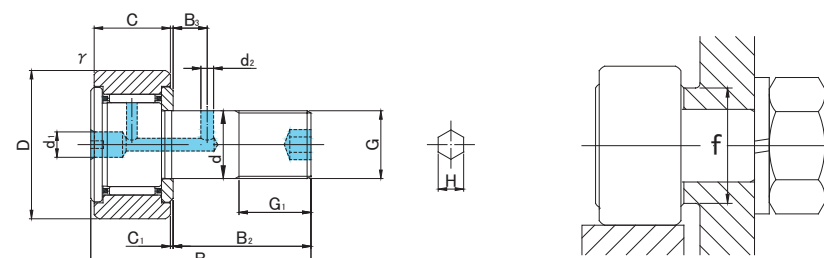
HEXAGON SOCKET ON THREAD SIDE
SCREWDRIVER SLOT HEAD



CF..B



CF..VB



PRODUCTS TO BE DISCONTINUED

~ END of JUL.2014

CF..B TYPE

Prepacked Grease

Stud diameter (mm)	h7 tolerance	Designation				Dimensions (mm)														Basic dynamic load rating Cr N	Basic static load rating Cor N	Largest permissible load N	Limiting speed * rpm	Track load capacity		Max tightening torque N·m	Mass g (approx)	
		Cylindrical outer ring		Crowned outer ring R500(CF12 ~ CF18) R1000(CF20 ≤)		D	C	d	G	G1	B1	B2	B3	C1	d1	d2	H	rs min	f min					Cylindrical outer ring N	Crowned outer ring N			
		Without seals	With seals	Without seals	With seals																							
12	0 -0.018	CF12B	CF12UUB	CF12RB	CF12UURB	30	14	12	M12×1.5	13	40	25		6	0.6	6	3	6	0.6	20	7 940	9 800	9 800	14 000	7 060	2 450	22	95
		CF12VB	CF12VUUB	CF12VRB	CF12VUURB																13 430	19 700	11 270	6 000				
12	0 -0.018	CF12-1B	CF12-1UUB	CF12-1RB	CF12-1UURB	32	14	12	M12×1.5	13	40	25		6	0.6	6	3	6	0.6	20	7 940	9 800	9 800	14 000	7 450	2 740	22	105
		CF12-1VB	CF12-1VUUB	CF12-1VRB	CF12-1VUURB																13 430	19 700	11 270	6 000				
16	0 -0.018	CF16B	CF16UUB	CF16RB	CF16UURB	35	18	16	M16×1.5	17	52	32.5		8	0.8	6	3	6	0.6	24	12 050	18 330	18 330	10 000	11 200	3 140	58	170
		CF16VB	CF16VUUB	CF16VRB	CF16VUURB																20 680	37 630	19 800	4 500				
18	0 -0.018	CF18B	CF18UUB	CF18RB	CF18UURB	40	20	18	M18×1.5	19	58	36.5		8	0.8	6	3	6	1	26	14 700	25 200	25 200	8 500	14 400	3 720	87	250
		CF18VB	CF18VUUB	CF18VRB	CF18VUURB																25 280	51 350	26 560	3 500				
20	0 -0.021	CF20B	CF20UUB	CF20RB	CF20UURB	52	24	20	M20×1.5	21	66	40.5		9	0.8	8	4	8	1	36	20 680	34 600	32 140	7 000	23 200	8 230	120	460
		CF20VB	CF20VUUB	CF20VRB	CF20VUURB																33 120	64 480	32 140	3 500				
20	0 -0.021	CF20-1B	CF20-1UUB	CF20-1RB	CF20-1UURB	47	24	20	M20×1.5	21	66	40.5		9	0.8	8	4	8	1	36	20 680	34 600	32 140	7 000	21 000	7 150	120	385
		CF20-1VB	CF20-1VUUB	CF20-1VRB	CF20-1VUURB																33 120	64 480	32 140	3 500				
24	0 -0.021	CF24B	CF24UUB	CF24RB	CF24UURB	62	29	24	M24×1.5	25	80	49.5		11	0.8	8	4	8	1	40	30 480	52 630	49 500	6 500	34 200	10 500	220	815
		CF24VB	CF24VUUB	CF24VRB	CF24VUURB																46 550	92 020	49 500	3 000				
24	0 -0.021	CF24-1B	CF24-1UUB	CF24-1RB	CF24-1UURB	72	29	24	M24×1.5	25	80	49.5		11	0.8	8	4	8	1	40	30 480	52 630	49 500	6 500	39 800	12 900	220	1 140
		CF24-1VB	CF24-1VUUB	CF24-1VRB	CF24-1VUURB																46 550	92 020	49 500	3 000				
30	0 -0.021	CF30B	CF30UUB	CF30RB	CF30UURB	80	35	30	M30×1.5	32	100	63		15	1	8	4	8	1	46	45 370	85 060	73 700	5 000	52 600	14 900	450	1 870
		CF30VB	CF30VUUB	CF30VRB	CF30VUURB																67 620	144 060	73 700	2 200				
30	0 -0.021	CF30-1B	CF30-1UUB	CF30-1RB	CF30-1UURB	85	35	30	M30×1.5	32	100	63		15	1	8	4	8	1	46	45 370	85 060	73 700	5 000	56 000	16 100	450	2 030
		CF30-1VB	CF30-1VUUB	CF30-1VRB	CF30-1VUURB																67 620	144 060	73 700	2 200				
30	0 -0.021	CF30-2B	CF30-2UUB	CF30-2RB	CF30-2UURB	90	35	30	M30×1.5	32	100	63		15	1	8	4	8	1	46	45 370	85 060	73 700	5 000	59 300	17 300	450	2 220
		CF30-2VB	CF30-2VUUB	CF30-2VRB	CF30-2VUURB																67 620	144 060	73 700	2 200				

* Without seals, suitable for grease lubrication. In case of oil lubrication, up to 130% of this value shall be permissible, and 70% of this value shall apply for types with seals.

OUTER RINGS TOLERANCE (μm)

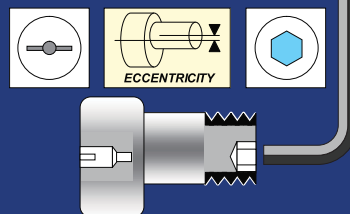
TYPE	Cylindrical outer ring	Crowned outer ring
CF12	0/-9	0/-50
CF12-1,CF16,CF18,CF20-1	0/-11	0/-50
CF20,CF24,CF24-1,CF30	0/-13	0/-50
CF30-1,CF30-2	0/-15	0/-50

ACCESSORIES

TYPE	STOP PLUG	RESIN PLUG	NUT
CF12/CF12-1/CF16/CF18	φ 6 Attached	φ 6 Attached	Attached
CF20/CF20-1/CF24/CF24-1/CF30/CF30-1/CF30-2	φ 8 Attached	φ 8 Attached	Attached

CAM FOLLOWERS

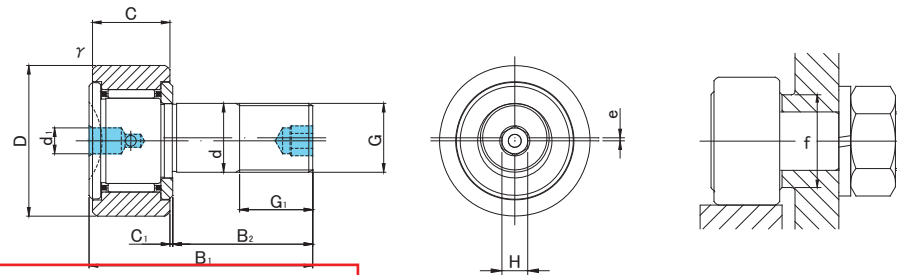
SOLID ECCENTRIC TYPE
HEXAGON SOCKET ON THREAD SIDE
SCREWDRIVER SLOT HEAD



CFH..B



CFH..VB



PRODUCTS TO BE DISCONTINUED

~ END of JUL.2014

CFH..B TYPE

Prepacked Grease

Stud diameter (mm)	h7 tolerance	Designation				Dimensions (mm)												Basic dynamic load rating Cr N	Basic static load rating Cor N	Largest permissible load N	Limiting speed * rpm	Track load capacity		Max tightening torque N·m	Mass g (approx)	
		Cylindrical outer ring		Crowned outer ring R500(CF12 ~ CF18) R1000(CF20 ≤)		D	C	d	G	G1	B1	B2	C1	d1	H	rs min	e					f min	Cylindrical outer ring N			Crowned outer ring N
12	0 -0.018	CFH12B	CFH12UUB	CFH12RB	CFH12UURB	30	14	12	M12×1.5	13	40	25	0.6	6	6	0.6	0.4	20	7 940	9 800	9 800	14 000	7 060	2 450	22	95
		CFH12VB	CFH12VUUB	CFH12VRB	CFH12VUURB														13 430	19 700	11 270	6 000				
12	0 -0.018	CFH12-1B	CFH12-1UUB	CFH12-1RB	CFH12-1UURB	32	14	12	M12×1.5	13	40	25	0.6	6	6	0.6	0.4	20	7 940	9 800	9 800	14 000	7 450	2 740	22	105
		CFH12-1VB	CFH12-1VUUB	CFH12-1VRB	CFH12-1VUURB														13 430	19 700	11 270	6 000				
16	0 -0.018	CFH16B	CFH16UUB	CFH16RB	CFH16UURB	35	18	16	M16×1.5	17	52	32.5	0.8	6	6	0.6	0.5	24	12 050	18 330	18 330	10 000	11 200	3 140	58	170
		CFH16VB	CFH16VUUB	CFH16VRB	CFH16VUURB														20 680	37 630	19 800	4 500				
18	0 -0.018	CFH18B	CFH18UUB	CFH18RB	CFH18UURB	40	20	18	M18×1.5	19	58	36.5	0.8	6	6	1	0.6	26	14 700	25 200	25 200	8 500	14 400	3 720	87	250
		CFH18VB	CFH18VUUB	CFH18VRB	CFH18VUURB														25 280	51 350	26 560	3 500				
20	0 -0.021	CFH20B	CFH20UUB	CFH20RB	CFH20UURB	52	24	20	M20×1.5	21	66	40.5	0.8	8	8	1	0.7	36	20 680	34 600	32 140	7 000	23 200	8 230	120	460
		CFH20VB	CFH20VUUB	CFH20VRB	CFH20VUURB														33 120	64 480	32 140	3 500				
20	0 -0.021	CFH20-1B	CFH20-1UUB	CFH20-1RB	CFH20-1UURB	47	24	20	M20×1.5	21	66	40.5	0.8	8	8	1	0.7	36	20 680	34 600	32 140	7 000	21 000	7 150	120	385
		CFH20-1VB	CFH20-1VUUB	CFH20-1VRB	CFH20-1VUURB														33 120	64 480	32 140	3 500				
24	0 -0.021	CFH24B	CFH24UUB	CFH24RB	CFH24UURB	62	29	24	M24×1.5	25	80	49.5	0.8	8	8	1	0.8	40	30 480	52 630	49 500	6 500	34 200	10 500	220	815
		CFH24VB	CFH24VUUB	CFH24VRB	CFH24VUURB														46 550	92 020	49 500	3 000				
24	0 -0.021	CFH24-1B	CFH24-1UUB	CFH24-1RB	CFH24-1UURB	72	29	24	M24×1.5	25	80	49.5	0.8	8	8	1	0.8	40	30 480	52 630	49 500	6 500	39 800	12 900	220	1 140
		CFH24-1VB	CFH24-1VUUB	CFH24-1VRB	CFH24-1VUURB														46 550	92 020	49 500	3 000				
30	0 -0.021	CFH30B	CFH30UUB	CFH30RB	CFH30UURB	80	35	30	M30×1.5	32	100	63	1	8	8	1	1	46	45 370	85 060	73 700	5 000	52 600	14 900	450	1 870
		CFH30VB	CFH30VUUB	CFH30VRB	CFH30VUURB														67 620	144 060	73 700	2 200				
30	0 -0.021	CFH30-1B	CFH30-1UUB	CFH30-1RB	CFH30-1UURB	85	35	30	M30×1.5	32	100	63	1	8	8	1	1	46	45 370	85 060	73 700	5 000	56 000	16 100	450	2 030
		CFH30-1VB	CFH30-1VUUB	CFH30-1VRB	CFH30-1VUURB														67 620	144 060	73 700	2 200				
30	0 -0.021	CFH30-2B	CFH30-2UUB	CFH30-2RB	CFH30-2UURB	90	35	30	M30×1.5	32	100	63	1	8	8	1	1	46	45 370	85 060	73 700	5 000	59 300	17 300	450	2 220
		CFH30-2VB	CFH30-2VUUB	CFH30-2VRB	CFH30-2VUURB														67 620	144 060	73 700	2 200				

* Without seals, suitable for grease lubrication. In case of oil lubrication, up to 130% of this value shall be permissible, and 70% of this value shall apply for types with seals.

OUTER RINGS TOLERANCE (μm)

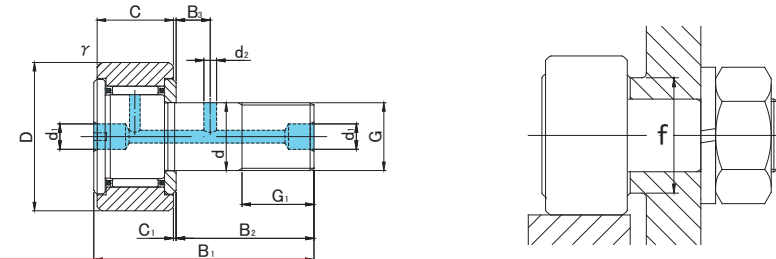
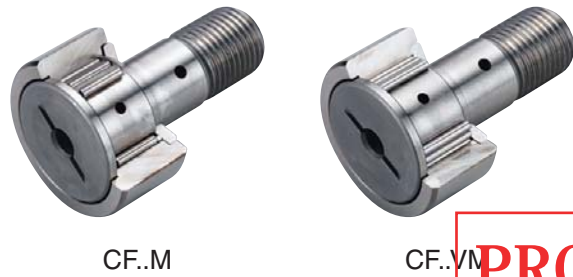
TYPE	Cylindrical outer ring	Crowned outer ring
CF12	0/-9	0/-50
CF12-1,CF16,CF18,CF20-1	0/-11	0/-50
CF20,CF24,CF24-1,CF30	0/-13	0/-50
CF30-1,CF30-2	0/-15	0/-50

ACCESSORIES

TYPE	STOP PLUG	RESIN PLUG	NUT
CF12/CF12-1/CF16/CF18	φ 6 Attached	φ 6 Attached	Attached
CF20/CF20-1/CF24/CF24-1/CF30/CF30-2	φ 8 Attached	φ 8 Attached	Attached



(STAINLESS STEEL)



PRODUCTS TO BE DISCONTINUED

~END of JUL.2014

CF..M TYPE

Prepacked Grease

Stud diameter (mm)	h7 tolerance	Designation				Dimensions (mm)													Basic dynamic load rating Cr N	Basic static load rating Cor N	Largest permissible load N	Limiting speed * rpm	Track load capacity		Max tightening torque N-m	Mass g (approx)
		Cylindrical outer ring		Crowned outer ring R500(CF12 ~ CF18) R1000(CF20 ≤)		D	C	d	G	G1	B1	B2	B3	C1	d1	d2	rs min	f min					Cylindrical outer ring N	Crowned outer ring N		
		Without seals	With seals	Without seals	With seals																					
12	0 -0.018	CF12M	CF12MUU	CF12MR	CF12MUUR	30	14	12	M12×1.5	13	40	25	6	0.6	6	3	0.6	20	7 300	9 010	9 800	14 000	7 060	2 450	22	95
		CF12VM	CF12VMUU	CF12VMR	CF12VMUUR														12 350	18 120	11 270	6 000				
12	0 -0.018	CF12-1M	CF12-1MUU	CF12-1MR	CF12-1MUUR	32	14	12	M12×1.5	13	40	25	6	0.6	6	3	0.6	20	7 300	9 010	9 800	14 000	7 450	2 740	22	105
		CF12-1VM	CF12-1VMUU	CF12-1VMR	CF12-1VMUUR														12 350	18 120	11 270	6 000				
16	0 -0.018	CF16M	CF16MUU	CF16MR	CF16MUUR	35	18	16	M16×1.5	17	52	32.5	8	0.8	6	3	0.6	24	11 080	16 860	18 330	10 000	11 200	3 140	58	170
		CF16VM	CF16VMUU	CF16VMR	CF16VMUUR														19 020	34 610	19 800	4 500				
18	0 -0.018	CF18M	CF18MUU	CF18MR	CF18MUUR	40	20	18	M18×1.5	19	58	36.5	8	0.8	6	3	1	26	13 520	23 180	25 200	8 500	14 400	3 720	87	250
		CF18VM	CF18VMUU	CF18VMR	CF18VMUUR														23 250	47 240	26 560	3 500				
20	0 -0.021	CF20M	CF20MUU	CF20MR	CF20MUUR	52	24	20	M20×1.5	21	66	40.5	9	0.8	8	4	1	36	19 020	31 830	32 140	7 000	23 200	8 230	120	460
		CF20VM	CF20VMUU	CF20VMR	CF20VMUUR														30 470	59 320	32 140	3 500				
20	0 -0.021	CF20-1M	CF20-1MUU	CF20-1MR	CF20-1MUUR	47	24	20	M20×1.5	21	66	40.5	9	0.8	8	4	1	36	19 020	31 830	32 140	7 000	21 000	7 150	120	385
		CF20-1VM	CF20-1VMUU	CF20-1VMR	CF20-1VMUUR														30 470	59 320	32 140	3 500				
24	0 -0.021	CF24M	CF24MUU	CF24MR	CF24MUUR	62	29	24	M24×1.5	25	80	49.5	11	0.8	8	4	1	40	28 040	48 410	49 500	6 500	34 200	10 500	220	815
		CF24VM	CF24VMUU	CF24VMR	CF24VMUUR														42 820	84 650	49 500	3 000				
24	0 -0.021	CF24-1M	CF24-1MUU	CF24-1MR	CF24-1MUUR	72	29	24	M24×1.5	25	80	49.5	11	0.8	8	4	1	40	28 040	48 410	49 500	6 500	39 800	12 900	220	1 140
		CF24-1VM	CF24-1VMUU	CF24-1VMR	CF24-1VMUUR														42 820	84 650	49 500	3 000				
30	0 -0.021	CF30M	CF30MUU	CF30MR	CF30MUUR	80	35	30	M30×1.5	32	100	63	15	1	8	4	1	46	41 740	78 250	73 700	5 000	52 600	14 900	450	1 870
		CF30VM	CF30VMUU	CF30VMR	CF30VMUUR														62 210	132 530	73 700	2 200				
30	0 -0.021	CF30-1M	CF30-1MUU	CF30-1MR	CF30-1MUUR	85	35	30	M30×1.5	32	100	63	15	1	8	4	1	46	41 740	78 250	73 700	5 000	56 000	16 100	450	2 030
		CF30-1VM	CF30-1VMUU	CF30-1VMR	CF30-1VMUUR														62 210	132 530	73 700	2 200				
30	0 -0.021	CF30-2M	CF30-2MUU	CF30-2MR	CF30-2MUUR	90	35	30	M30×1.5	32	100	63	15	1	8	4	1	46	41 740	78 250	73 700	5 000	59 300	17 300	450	2 220
		CF30-2VM	CF30-2VMUU	CF30-2VMR	CF30-2VMUUR														62 210	132 530	73 700	2 200				

* Without seals, suitable for grease lubrication. In case of oil lubrication, up to 130% of this value shall be permissible, and 70% of this value shall apply for types with seals.

OUTER RINGS TOLERANCE (µm)

TYPE	Cylindrical outer ring	Crowned outer ring
CF5M,CF6M	0/-8	0/-50
CF8M,CF10M,CF10-1M,CF12M	0/-9	0/-50
CF12-1M,CF16M,CF18M,CF20-1M	0/-11	0/-50
CF20M,CF24M,CF24-1M,CF30M	0/-13	0/-50
CF30-1M,CF30-2M	0/-15	0/-50

ACCESSORIES

TYPE	STOP PLUG	RESIN PLUG	NUT
CF5M	—	—	Attached
CF6M/CF8M/CF10M/CF10-1M	—	φ 4 Attached	Attached
CF10MK/CF10-1MK	φ 4 Attached	φ 4 Attached	Attached
CF12M/CF12-1M/CF16M/CF18M	φ 6 Attached	φ 6 Attached	Attached
CF20M/CF20-1M/CF24M/CF24-1M/CF30M/CF30-1M/CF30-2M	φ 8 Attached	φ 8 Attached	Attached

CAM FOLLOWERS
STAINLESS STEEL
HEXAGON SOCKET ON THREAD SIDE
SCREWDRIVER SLOT HEAD

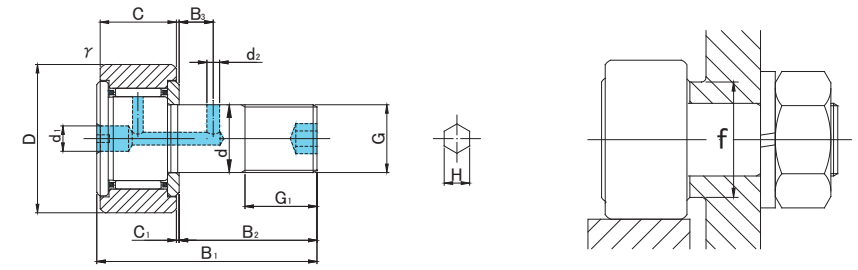
SUS/INOX

(STAINLESS STEEL)



CF..MB

CF..VMB



PRODUCTS TO BE DISCONTINUED

~END of JUL.2014

CF..MB TYPE

Prepacked Grease

Stud diameter (mm)	Designation	Dimensions (mm)															Basic dynamic load rating	Basic static load rating	Largest permissible load	Limiting speed *	Track load capacity		Max tightening torque	Mass	
		Cylindrical outer ring				Crowned outer ring R500 (CF12 ~ CF18) R1000 (CF20 ≤)															Cylindrical outer ring N	Crowned outer ring N			
		Without seals	With seals	Without seals	With seals	D	C	G	G1	B1	B2	B3	C1	d1	d2	H									r _s min
12	CF12MB	CF12MUUB	CF12MRB	CF12MUURB	30	14	M12×1.5	13	40	25	6	0.6	6	3	6	0.6	20	7 300	9 010	9 800	14 000	7 060	2 450	22	95
	CF12VMB	CF12VMUUB	CF12VMRB	CF12VMUURB														12 350	18 120	11 270	6 000				
12	CF12-1MB	CF12-1MUUB	CF12-1MRB	CF12-1MUURB	32	14	M12×1.5	13	40	25	6	0.6	6	3	6	0.6	20	7 300	9 010	9 800	14 000	7 450	2 740	22	105
	CF12-1VMB	CF12-1VMUUB	CF12-1VMRB	CF12-1VMUURB														12 350	18 120	11 270	6 000				
16	CF16MB	CF16MUUB	CF16MRB	CF16MUURB	35	18	M16×1.5	17	52	32.5	8	0.8	6	3	6	0.6	24	11 080	16 860	18 330	10 000	11 200	3 140	58	170
	CF16VMB	CF16VMUUB	CF16VMRB	CF16VMUURB														19 020	34 610	19 800	4 500				
18	CF18MB	CF18MUUB	CF18MRB	CF18MUURB	40	20	M18×1.5	19	58	36.5	8	0.8	6	3	6	1	26	13 520	23 180	25 200	8 500	14 400	3 720	87	250
	CF18VMB	CF18VMUUB	CF18VMRB	CF18VMUURB														23 250	47 240	26 560	3 500				
20	CF20MB	CF20MUUB	CF20MRB	CF20MUURB	52	24	M20×1.5	21	66	40.5	9	0.8	8	4	8	1	36	19 020	31 830	32 140	7 000	23 200	8 230	120	460
	CF20VMB	CF20VMUUB	CF20VMRB	CF20VMUURB														30 470	59 320	32 140	3 500				
20	CF20-1MB	CF20-1MUUB	CF20-1MRB	CF20-1MUURB	47	24	M20×1.5	21	66	40.5	9	0.8	8	4	8	1	36	19 020	31 830	32 140	7 000	21 000	7 150	120	385
	CF20-1VMB	CF20-1VMUUB	CF20-1VMRB	CF20-1VMUURB														30 470	59 320	32 140	3 500				
24	CF24MB	CF24MUUB	CF24MRB	CF24MUURB	62	29	M24×1.5	25	80	49.5	11	0.8	8	4	8	1	40	28 040	48 410	49 500	6 500	34 200	10 500	220	815
	CF24VMB	CF24VMUUB	CF24VMRB	CF24VMUURB														42 820	84 650	49 500	3 000				
24	CF24-1MB	CF24-1MUUB	CF24-1MRB	CF24-1MUURB	72	29	M24×1.5	25	80	49.5	11	0.8	8	4	8	1	40	28 040	48 410	49 500	6 500	39 800	12 900	220	1 140
	CF24-1VMB	CF24-1VMUUB	CF24-1VMRB	CF24-1VMUURB														42 820	84 650	49 500	3 000				
30	CF30MB	CF30MUUB	CF30MRB	CF30MUURB	80	35	M30×1.5	32	100	63	15	1	8	4	8	1	46	41 740	78 250	73 700	5 000	52 600	14 900	450	1 870
	CF30VMB	CF30VMUUB	CF30VMRB	CF30VMUURB														62 210	132 530	73 700	2 200				
30	CF30-1MB	CF30-1MUUB	CF30-1MRB	CF30-1MUURB	85	35	M30×1.5	32	100	63	15	1	8	4	8	1	46	41 740	78 250	73 700	5 000	56 000	16 100	450	2 030
	CF30-1VMB	CF30-1VMUUB	CF30-1VMRB	CF30-1VMUURB														62 210	132 530	73 700	2 200				
30	CF30-2MB	CF30-2MUUB	CF30-2MRB	CF30-2MUURB	90	35	M30×1.5	32	100	63	15	1	8	4	8	1	46	41 740	78 250	73 700	5 000	59 300	17 300	450	2 220
	CF30-2VMB	CF30-2VMUUB	CF30-2VMRB	CF30-2VMUURB														62 210	132 530	73 700	2 200				

* Without seals, suitable for grease lubrication. In case of oil lubrication, up to 130% of this value shall be permissible, and 70% of this value shall apply for types with seals.

OUTER RINGS TOLERANCE (μm)

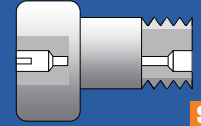
TYPE	Cylindrical outer ring	Crowned outer ring
CF12M	0/-9	0/-50
CF12-1M,CF16M,CF18M,CF20-1M	0/-11	0/-50
CF20M,CF24M,CF24-1M,CF30M	0/-13	0/-50
CF30-1M,CF30-2M	0/-15	0/-50

ACCESSORIES

TYPE	STOP PLUG	RESIN PLUG	NUT
CF12M/CF12-1M/CF16M/CF18M	φ 6 Attached	φ 6 Attached	Attached
CF20M/CF20-1M/CF24M/CF24-1M/CF30M/CF30-1M/CF30-2M	φ 8 Attached	φ 8 Attached	Attached

CAM FOLLOWERS STAINLESS STEEL

SOLID ECCENTRIC TYPE
SCREWDRIVER SLOT HEAD



SUS/INOX

(STAINLESS STEEL)

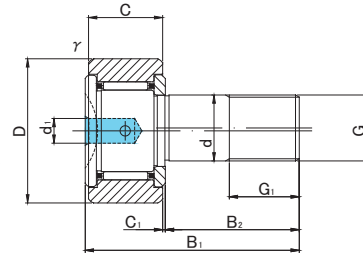
STAINLESS STEEL



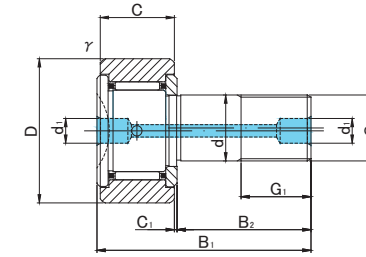
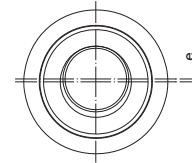
CFH..M



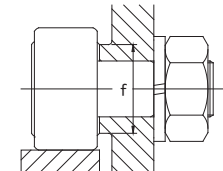
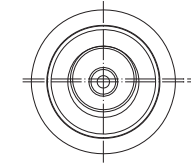
CFH..VM



CFH5(V)M~CFH10-1(V)M



CFH12(V)M~CFH18(V)M



CFH..M TYPE

Prepacked Grease

Stud diameter (mm)	Designation	Dimensions (mm)															Basic dynamic load rating	Basic static load rating	Largest permissible load	Limiting speed *	Track load capacity		Max tightening torque	Mass			
		Cylindrical outer ring				Crowned outer ring R250(CF5) R500(CF6 ~ CF18)				D	C	d	G	G1	B1	B2					C1	d1			r _s min	e	f min
h7 tolerance	Without seals	With seals	Without seals	With seals																							
5	CFH 5M	CFH 5MUU	CFH 5MR	CFH 5MUUR	13	9	5	M5×0.8	7.5	23	13	0.5	3.1	0.3	0.2	9.7	2 880	2 540	1 420	29 000	2 250	530	2	10.5			
	CFH 5VM	CFH 5VMUU	CFH 5VMR	CFH 5VMUUR													4 690	5 060	1 420	11 600							
6	CFH 6M	CFH 6MUU	CFH 6MR	CFH 6MUUR	16	11	6	M6×1	8	28	16	0.6	4	0.3	0.25	11	3 330	3 330	2 110	25 000	3 430	1 080	3	18.5			
	CFH 6VM	CFH 6VMUU	CFH 6VMR	CFH 6VMUUR													6 400	7 840	2 110	12 000							
8	CFH 8M	CFH 8MUU	CFH 8MR	CFH 8MUUR	19	11	8	M8×1.25	10	32	20	0.6	4	0.3	0.25	13	3 960	4 330	4 710	20 000	4 020	1 370	8	28.5			
	CFH 8VM	CFH 8VMUU	CFH 8VMR	CFH 8VMUUR													7 470	10 270	4 710	9 000							
10	CFH10M	CFH10MUU	CFH10MR	CFH10MUUR	22	12	10	M10×1.25	12	36	23	0.6	4	0.3	0.3	15	4 950	6 310	6 860	17 000	4 700	1 670	15	45			
	CFH10VM	CFH10VMUU	CFH10VMR	CFH10VMUUR													8 740	13 340	7 450	7 500							
10	CFH10-1M	CFH10-1MUU	CFH10-1MR	CFH10-1MUUR	26	12	10	M10×1.25	12	36	23	0.6	4	0.3	0.3	15	4 950	6 310	6 860	17 000	5 490	2 060	15	60			
	CFH10-1VM	CFH10-1VMUU	CFH10-1VMR	CFH10-1VMUUR													8 740	13 340	7 450	7 500							
12	CFH12M	CFH12MUU	CFH12MR	CFH12MUUR	30	14	12	M12×1.5	13	40	25	0.6	6	0.6	0.4	20	7 300	9 010	9 800	14 000	7 060	2 450	22	95			
	CFH12VM	CFH12VMUU	CFH12VMR	CFH12VMUUR													12 350	18 120	11 270	6 000							
12	CFH12-1M	CFH12-1MUU	CFH12-1MR	CFH12-1MUUR	32	14	12	M12×1.5	13	40	25	0.6	6	0.6	0.4	20	7 300	9 010	9 800	14 000	7 450	2 740	22	105			
	CFH12-1VM	CFH12-1VMUU	CFH12-1VMR	CFH12-1VMUUR													12 350	18 120	11 270	6 000							
16	CFH16M	CFH16MUU	CFH16MR	CFH16MUUR	35	18	16	M16×1.5	17	52	32.5	0.8	6	0.6	0.5	24	11 080	16 860	18 330	10 000	11 200	3 140	58	170			
	CFH16VM	CFH16VMUU	CFH16VMR	CFH16VMUUR													19 020	34 610	19 800	4 500							
18	CFH18M	CFH18MUU	CFH18MR	CFH18MUUR	40	20	18	M18×1.5	19	58	36.5	0.8	6	1	0.6	26	13 520	23 180	25 200	8 500	14 400	3 720	87	250			
	CFH18VM	CFH18VMUU	CFH18VMR	CFH18VMUUR													23 250	47 240	26 560	3 500							

PRODUCTS TO BE DISCONTINUED
~END of JUL.2014

* Without seals, suitable for grease lubrication. In case of oil lubrication, up to 130% of this value shall be permissible, and 70% of this value shall apply for types with seals.

OUTER RINGS TOLERANCE (μm)

TYPE	Cylindrical outer ring	Crowned outer ring
CF5M,CF6M	0/-8	0/-50
CF8M,CF10M,CF10-1M,CF12M	0/-9	0/-50
CF12-1M,CF16M,CF18M,CF20-1M	0/-11	0/-50
CF20M,CF24M,CF24-1M,CF30M	0/-13	0/-50
CF30-1M,CF30-2M	0/-15	0/-50

ACCESSORIES

TYPE	STOP PLUG	RESIN PLUG	NUT
CF5M	—	—	Attached
CF6M/CF8M/CF10M/CF10-1M	—	φ 4 Attached	Attached
CF12M/CF12-1M/CF16M/CF18M	φ 6 Attached	φ 6 Attached	Attached
CF20M/CF20-1M/CF24M/CF24-1M/CF30M/CF30-1M/CF30-2M	φ 8 Attached	φ 8 Attached	Attached

(STAINLESS STEEL)

CAM FOLLOWERS
STAINLESS STEEL
SOLID ECCENTRIC TYPE
SCREWDRIVER SLOT HEAD

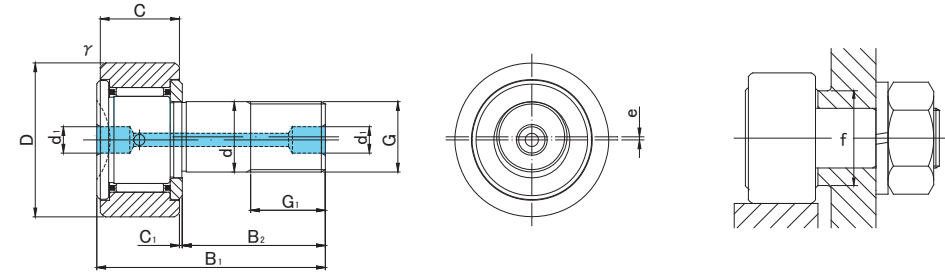
ECCENTRICITY



CFH..M



CFH..VM



PRODUCTS TO BE DISCONTINUED

~END of JUL.2014

Prepacked Grease

CFH..M TYPE

Stud diameter (mm)	h7 tolerance	Designation				Dimensions (mm)												Basic dynamic load rating Cr N	Basic static load rating Cor N	Largest permissible load N	Limiting speed * rpm	Track load capacity		Max tightening torque N-m	Mass g (approx)
		Cylindrical outer ring		Crowned outer ring R1000(CF20 ≤)		D	C	d	G	G1	B1	B2	C1	d1	rs min	e	f min					Cylindrical outer ring N	Crowned outer ring N		
		Without seals	With seals	Without seals	With seals																				
20	0 -0.021	CFH20M	CFH20MUU	CFH20MR	CFH20MUUR	52	24	20	M20×1.5	21	66	40.5	0.8	8	1	0.7	36	19 020	31 830	32 140	7 000	23 200	8 230	120	460
		CFH20VM	CFH20VMUU	CFH20VMR	CFH20VMUUR													30 470	59 320	32 140	3 500				
20	0 -0.021	CFH20-1M	CFH20-1MUU	CFH20-1MR	CFH20-1MUUR	47	24	20	M20×1.5	21	66	40.5	0.8	8	1	0.7	36	19 020	31 830	32 140	7 000	21 000	7 150	120	385
		CFH20-1VM	CFH20-1VMUU	CFH20-1VMR	CFH20-1VMUUR													30 470	59 320	32 140	3 500				
24	0 -0.021	CFH24M	CFH24MUU	CFH24MR	CFH24MUUR	62	29	24	M24×1.5	25	80	49.5	0.8	8	1	0.8	40	28 040	48 410	49 500	6 500	34 200	10 500	220	815
		CFH24VM	CFH24VMUU	CFH24VMR	CFH24VMUUR													42 820	84 650	49 500	3 000				
24	0 -0.021	CFH24-1M	CFH24-1MUU	CFH24-1MR	CFH24-1MUUR	72	29	24	M24×1.5	25	80	49.5	0.8	8	1	0.8	40	28 040	48 410	49 500	6 500	39 800	12 900	220	1 140
		CFH24-1VM	CFH24-1VMUU	CFH24-1VMR	CFH24-1VMUUR													42 820	84 650	49 500	3 000				
30	0 -0.021	CFH30M	CFH30MUU	CFH30MR	CFH30MUUR	80	35	30	M30×1.5	32	100	63	1	8	1	1	46	41 740	78 250	73 700	5 000	52 600	14 900	450	1 870
		CFH30VM	CFH30VMUU	CFH30VMR	CFH30VMUUR													62 210	132 530	73 700	2 200				
30	0 -0.021	CFH30-1M	CFH30-1MUU	CFH30-1MR	CFH30-1MUUR	85	35	30	M30×1.5	32	100	63	1	8	1	1	46	41 740	78 250	73 700	5 000	56 000	16 100	450	2 030
		CFH30-1VM	CFH30-1VMUU	CFH30-1VMR	CFH30-1VMUUR													62 210	132 530	73 700	2 200				
30	0 -0.021	CFH30-2M	CFH30-2MUU	CFH30-2MR	CFH30-2MUUR	90	35	30	M30×1.5	32	100	63	1	8	1	1	46	41 740	78 250	73 700	5 000	59 300	17 300	450	2 220
		CFH30-2VM	CFH30-2VMUU	CFH30-2VMR	CFH30-2VMUUR													62 210	132 530	73 700	2 200				

* Without seals, suitable for grease lubrication. In case of oil lubrication, up to 130% of this value shall be permissible, and 70% of this value shall apply for types with seals.

OUTER RINGS TOLERANCE (μm)

TYPE	Cylindrical outer ring	Crowned outer ring
CF5M,CF6M	0/-8	0/-50
CF8M,CF10M,CF10-1M,CF12M	0/-9	0/-50
CF12-1M,CF16M,CF18M,CF20-1M	0/-11	0/-50
CF20M,CF24M,CF24-1M,CF30M	0/-13	0/-50
CF30-1M,CF30-2M	0/-15	0/-50

ACCESSORIES

TYPE	STOP PLUG	RESIN PLUG	NUT
CF5M	—	—	Attached
CF6M/CF8M/CF10M/CF10-1M	—	φ 4 Attached	Attached
CF12M/CF12-1M/CF16M/CF18M	φ 6 Attached	φ 6 Attached	Attached
CF20M/CF20-1M/CF24M/CF24-1M/CF30M/CF30-1M/CF30-2M	φ 8 Attached	φ 8 Attached	Attached

CFH..M

CFH..M

(STAINLESS STEEL)

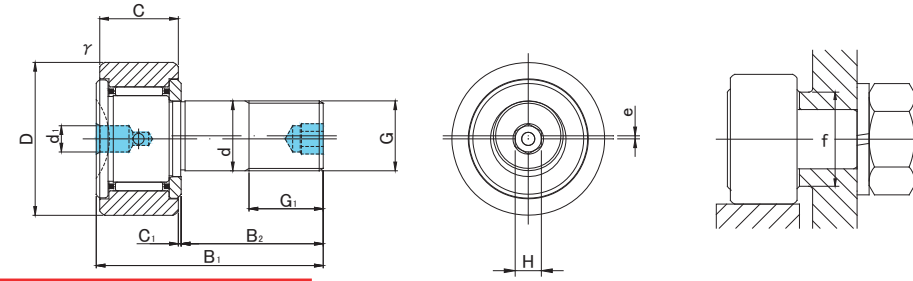
CAM FOLLOWERS
STAINLESS STEEL
SOLID ECCENTRIC TYPE
HEXAGON SOCKET ON THREAD SIDE
SCREWDRIVER SLOT HEAD

SUS/INOX



CFH..MB

CFH..VMB



PRODUCTS TO BE DISCONTINUED

~END of JUL.2014

Prepacked Grease

CFH..MB TYPE

Stud diameter (mm)	h7 tolerance	Designation				Dimensions (mm)												Basic dynamic load rating Cr N	Basic static load rating Cor N	Largest permissible load N	Limiting speed * rpm	Track load capacity		Max tightening torque N·m	Mass g (approx)	
		Cylindrical outer ring		Crowned outer ring R500(CF12 ~ CF18) R1000(CF20 ≤)		D	C	d	G	G1	B1	B2	C1	d1	H	r _s min	e					f min	Cylindrical outer ring N			Crowned outer ring N
		Without seals	With seals	Without seals	With seals																					
12	0 -0.018	CFH12MB	CFH12MUUB	CFH12MRB	CFH12MUURB	30	14	12	M12×1.5	13	40	25	0.6	6	6	0.6	0.4	20	7 300	9 010	9 800	14 000	7 060	2 450	22	95
		CFH12VMB	CFH12VMUUB	CFH12VMRB	CFH12VMUURB														12 350	18 120	11 270	6 000				
12	0 -0.018	CFH12-1MB	CFH12-1MUUB	CFH12-1MRB	CFH12-1MUURB	32	14	12	M12×1.5	13	40	25	0.6	6	6	0.6	0.4	20	7 300	9 010	9 800	14 000	7 450	2 740	22	105
		CFH12-1VMB	CFH12-1VMUUB	CFH12-1VMRB	CFH12-1VMUURB														12 350	18 120	11 270	6 000				
16	0 -0.018	CFH16MB	CFH16MUUB	CFH16MRB	CFH16MUURB	35	18	16	M16×1.5	17	52	32.5	0.8	6	6	0.6	0.5	24	11 080	16 860	18 330	10 000	11 200	3 140	58	170
		CFH16VMB	CFH16VMUUB	CFH16VMRB	CFH16VMUURB														19 020	34 610	19 800	4 500				
18	0 -0.018	CFH18MB	CFH18MUUB	CFH18MRB	CFH18MUURB	40	20	18	M18×1.5	19	58	36.5	0.8	6	6	1	0.6	26	13 520	23 180	25 200	8 500	14 400	3 720	87	250
		CFH18VMB	CFH18VMUUB	CFH18VMRB	CFH18VMUURB														23 250	47 240	26 560	3 500				
20	0 -0.021	CFH20MB	CFH20MUUB	CFH20MRB	CFH20MUURB	52	24	20	M20×1.5	21	66	40.5	0.8	8	8	1	0.7	36	19 020	31 830	32 140	7 000	23 200	8 230	120	460
		CFH20VMB	CFH20VMUUB	CFH20VMRB	CFH20VMUURB														30 470	59 320	32 140	3 500				
20	0 -0.021	CFH20-1MB	CFH20-1MUUB	CFH20-1MRB	CFH20-1MUURB	47	24	20	M20×1.5	21	66	40.5	0.8	8	8	1	0.7	36	19 020	31 830	32 140	7 000	21 000	7 150	120	385
		CFH20-1VMB	CFH20-1VMUUB	CFH20-1VMRB	CFH20-1VMUURB														30 470	59 320	32 140	3 500				
24	0 -0.021	CFH24MB	CFH24MUUB	CFH24MRB	CFH24MUURB	62	29	24	M24×1.5	25	80	49.5	0.8	8	8	1	0.8	40	28 040	48 410	49 500	6 500	34 200	10 500	220	815
		CFH24VMB	CFH24VMUUB	CFH24VMRB	CFH24VMUURB														42 820	84 650	49 500	3 000				
24	0 -0.021	CFH24-1MB	CFH24-1MUUB	CFH24-1MRB	CFH24-1MUURB	72	29	24	M24×1.5	25	80	49.5	0.8	8	8	1	0.8	40	28 040	48 410	49 500	6 500	39 800	12 900	220	1 140
		CFH24-1VMB	CFH24-1VMUUB	CFH24-1VMRB	CFH24-1VMUURB														42 820	84 650	49 500	3 000				
30	0 -0.021	CFH30MB	CFH30MUUB	CFH30MRB	CFH30MUURB	80	35	30	M30×1.5	32	100	63	1	8	8	1	1	46	41 740	78 250	73 700	5 000	52 600	14 900	450	1 870
		CFH30VMB	CFH30VMUUB	CFH30VMRB	CFH30VMUURB														62 210	132 530	73 700	2 200				
30	0 -0.021	CFH30-1MB	CFH30-1MUUB	CFH30-1MRB	CFH30-1MUURB	85	35	30	M30×1.5	32	100	63	1	8	8	1	1	46	41 740	78 250	73 700	5 000	56 000	16 100	450	2 030
		CFH30-1VMB	CFH30-1VMUUB	CFH30-1VMRB	CFH30-1VMUURB														62 210	132 530	73 700	2 200				
30	0 -0.021	CFH30-2MB	CFH30-2MUUB	CFH30-2MRB	CFH30-2MUURB	90	35	30	M30×1.5	32	100	63	1	8	8	1	1	46	41 740	78 250	73 700	5 000	59 300	17 300	450	2 220
		CFH30-2VMB	CFH30-2VMUUB	CFH30-2VMRB	CFH30-2VMUURB														62 210	132 530	73 700	2 200				

* Without seals, suitable for grease lubrication. In case of oil lubrication, up to 130% of this value shall be permissible, and 70% of this value shall apply for types with seals.

OUTER RINGS TOLERANCE (μm)

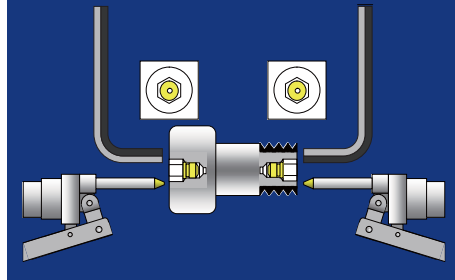
TYPE	Cylindrical outer ring	Crowned outer ring
CF12M	0/-9	0/-50
CF12-1M,CF16M,CF18M,CF20-1M	0/-11	0/-50
CF20M,CF24M,CF24-1M,CF30M	0/-13	0/-50
CF30-1M,CF30-2M	0/-15	0/-50

ACCESSORIES

TYPE	STOP PLUG	RESIN PLUG	NUT
CF12M/CF12-1M/CF16M/CF18M	φ 6 Attached	φ 6 Attached	Attached
CF20M/CF20-1M/CF24M/CF24-1M/CF30M/CF30-1M/CF30-2M	φ 8 Attached	φ 8 Attached	Attached

CAM FOLLOWERS

HEXAGON SOCKET ON BOTH SIDES
GREASE NIPPLE INSTALLED



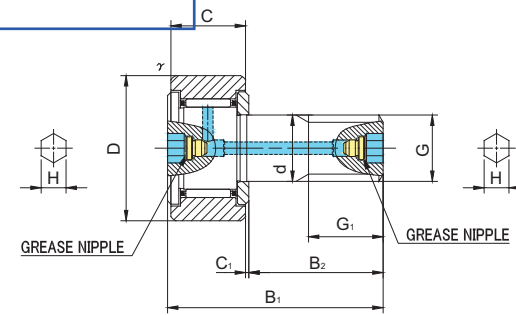
RECOMMENDED REPLACEMENTS



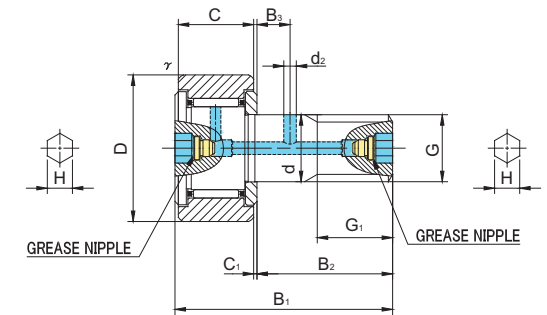
CF..AB



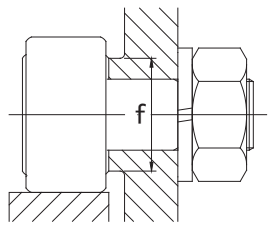
CF..VAB



CF10(V)ABK~CF10-1(V)ABK



CF12(V)AB~CF18(V)AB



CF..AB TYPE

Prepacked Grease

Stud diameter (mm)	Designation	Dimensions (mm)															Basic dynamic load rating	Basic static load rating	Largest permissible load	Limiting speed *	Track load capacity		Max tightening torque	Mass	
		Cylindrical outer ring				Crowned outer ring				Other dimensions											Cylindrical outer ring N	Crowned outer ring N			N·m
h7 tolerance	Without seals	With seals	Without seals	With seals	D	C	d	G	G1	B1	B2	B3	C1	d2	H	r _s min	f min	Cr N	Cor N	N	rpm	N	N	N·m	g (approx)
10	CF10ABK	CF10UUABK	CF10RABK	CF10UURABK	22	12	10	M10×1	12	36	23	—	0.6	—	5	0.3	15	5 390	6 860	6 860	17 000	4 700	1 670	15	45
	CF10VABK	CF10VUUABK	CF10VRABK	CF10VUURABK														9 510	14 500	7 450	7 500				
10	CF10-1ABK	CF10-1UUABK	CF10-1RABK	CF10-1UURABK	26	12	10	M10×1	12	36	23	—	0.6	—	5	0.3	15	5 390	6 860	6 860	17 000	5 490	2 060	15	60
	CF10-1VABK	CF10-1VUUABK	CF10-1VRABK	CF10-1VUURABK														9 510	14 500	7 450	7 500				
12	CF12AB	CF12UUAB	CF12RAB	CF12UURAB	30	14	12	M12×1.5	13	40	25	6	0.6	3	6	0.6	20	7 940	9 800	9 800	14 000	7 060	2 450	22	95
	CF12VAB	CF12VUUAB	CF12VRAB	CF12VUURAB														13 430	19 700	11 270	6 000				
12	CF12-1AB	CF12-1UUAB	CF12-1RAB	CF12-1UURAB	32	14	12	M12×1.5	13	40	25	6	0.6	3	6	0.6	20	7 940	9 800	9 800	14 000	7 450	2 740	22	105
	CF12-1VAB	CF12-1VUUAB	CF12-1VRAB	CF12-1VUURAB														13 430	19 700	11 270	6 000				
16	CF16AB	CF16UUAB	CF16RAB	CF16UURAB	35	18	16	M16×1.5	17	52	32.5	8	0.8	3	6	0.6	24	12 050	18 330	18 330	10 000	11 200	3 140	58	170
	CF16VAB	CF16VUUAB	CF16VRAB	CF16VUURAB														20 680	37 630	19 800	4 500				
18	CF18AB	CF18UUAB	CF18RAB	CF18UURAB	40	20	18	M18×1.5	19	58	36.5	8	0.8	3	6	1	26	14 700	25 200	25 200	8 500	14 400	3 720	87	250
	CF18VAB	CF18VUUAB	CF18VRAB	CF18VUURAB														25 280	51 350	26 560	3 500				
20	CF20AB	CF20UUAB	CF20RAB	CF20UURAB	52	24	20	M20×1.5	21	66	40.5	9	0.8	4	8	1	36	20 680	34 600	32 140	7 000	23 200	8 230	120	460
	CF20VAB	CF20VUUAB	CF20VRAB	CF20VUURAB														33 120	64 480	32 140	3 500				

CF..AB TYPE has oil holes (grease nipple) which are prepared in the stud head and thread side, also an oil hole is prepared in the outer surface of stud.

* Without seals, suitable for grease lubrication. In case of oil lubrication, up to 130% of this value shall be permissible, and 70% of this value shall apply for types with seals.

OUTER RINGS TOLERANCE (μm)

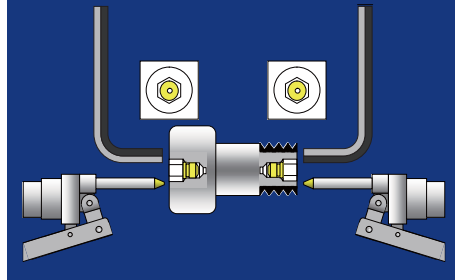
TYPE	Cylindrical outer ring	Crowned outer ring
CF10,CF10-1,CF12	0/-9	0/-50
CF12-1,CF16,CF18,CF20-1	0/-11	0/-50
CF20,CF24,CF24-1,CF30	0/-13	0/-50
CF30-1,CF30-2	0/-15	0/-50

ACCESSORIES

TYPE	Grease Nipple	NUT
All types	Installed	Attached

CAM FOLLOWERS

HEXAGON SOCKET ON BOTH SIDES
GREASE NIPPLE INSTALLED



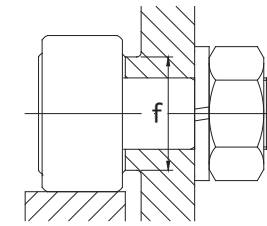
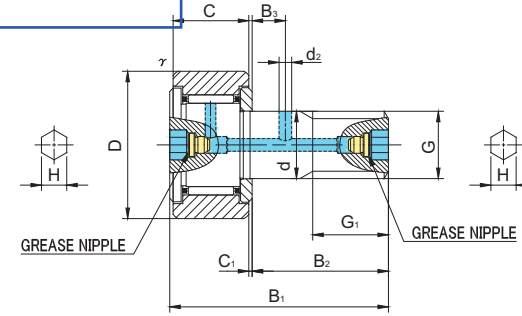
RECOMMENDED REPLACEMENTS



CF..AB



CF..VAB



CF..AB TYPE

Prepacked Grease

Stud diameter (mm)	h7 tolerance	Designation				Dimensions (mm)													Basic dynamic load rating Cr N	Basic static load rating Cor N	Largest permissible load N	Limiting speed * rpm	Track load capacity		Max tightening torque N·m	Mass g (approx)	
		Cylindrical outer ring		Crowned outer ring R1000(CF20 ≤)		D	C	d	G	G1	B1	B2	B3	C1	d2	H	rs min	f min					Cylindrical outer ring N	Crowned outer ring N			
		Without seals	With seals	Without seals	With seals																						
20	0 -0.021	CF20-1AB	CF20-1UUAB	CF20-1RAB	CF20-1UURAB	47	24	20	M20×1.5	21	66	40.5		9	0.8	4	8	1	36	20 680	34 600	32 140	7 000	21 000	7 150	120	385
		CF20-1VAB	CF20-1VUUAB	CF20-1VRAB	CF20-1VUURAB															33 120	64 480	32 140	3 500				
24	0 -0.021	CF24AB	CF24UUAB	CF24RAB	CF24UURAB	62	29	24	M24×1.5	25	80	49.5		11	0.8	4	8	1	40	30 480	52 630	49 500	6 500	34 200	10 500	220	815
		CF24VAB	CF24VUUAB	CF24VRAB	CF24VUURAB															46 550	92 020	49 500	3 000				
24	0 -0.021	CF24-1AB	CF24-1UUAB	CF24-1RAB	CF24-1UURAB	72	29	24	M24×1.5	25	80	49.5		11	0.8	4	8	1	40	30 480	52 630	49 500	6 500	39 800	12 900	220	1 140
		CF24-1VAB	CF24-1VUUAB	CF24-1VRAB	CF24-1VUURAB															46 550	92 020	49 500	3 000				
30	0 -0.021	CF30AB	CF30UUAB	CF30RAB	CF30UURAB	80	35	30	M30×1.5	32	100	63		15	1	4	8	1	46	45 370	85 060	73 700	5 000	52 600	14 900	450	1 870
		CF30VAB	CF30VUUAB	CF30VRAB	CF30VUURAB															67 620	144 060	73 700	2 200				
30	0 -0.021	CF30-1AB	CF30-1UUAB	CF30-1RAB	CF30-1UURAB	85	35	30	M30×1.5	32	100	63		15	1	4	8	1	46	45 370	85 060	73 700	5 000	56 000	16 100	450	2 030
		CF30-1VAB	CF30-1VUUAB	CF30-1VRAB	CF30-1VUURAB															67 620	144 060	73 700	2 200				
30	0 -0.021	CF30-2AB	CF30-2UUAB	CF30-2RAB	CF30-2UURAB	90	35	30	M30×1.5	32	100	63		15	1	4	8	1	46	45 370	85 060	73 700	5 000	59 300	17 300	450	2 220
		CF30-2VAB	CF30-2VUUAB	CF30-2VRAB	CF30-2VUURAB															67 620	144 060	73 700	2 200				

CF..AB TYPE has oil holes (grease nipple) which are prepared in the stud head and thread side, also an oil hole is prepared in the outer surface of stud.

* Without seals, suitable for grease lubrication. In case of oil lubrication, up to 130% of this value shall be permissible, and 70% of this value shall apply for types with seals.

OUTER RINGS TOLERANCE (μm)

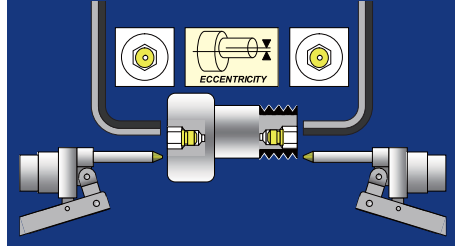
TYPE	Cylindrical outer ring	Crowned outer ring
CF10,CF10-1,CF12	0/-9	0/-50
CF12-1,CF16,CF18,CF20-1	0/-11	0/-50
CF20,CF24,CF24-1,CF30	0/-13	0/-50
CF30-1,CF30-2	0/-15	0/-50

ACCESSORIES

TYPE		
All types	Installed	Attached

CAM FOLLOWERS

SOLID ECCENTRIC TYPE
HEXAGON SOCKET ON BOTH SIDES
GREASE NIPPLE INSTALLED



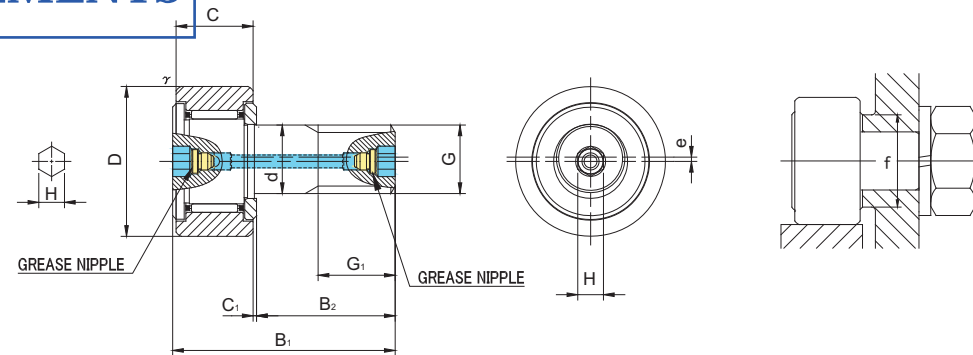
RECOMMENDED REPLACEMENTS



CFH..AB



CFH..VAB



CFH..AB TYPE

Prepacked Grease

Stud diameter (mm)	h7 tolerance	Designation				Dimensions (mm)												Basic dynamic load rating	Basic static load rating	Largest permissible load	Limiting speed *	Track load capacity		Max tightening torque	Mass
		Cylindrical outer ring		Crowned outer ring R500(CF10 ~ CF18) R1000(CF20 ≤)		D	C	d	G	G1	B1	B2	C1	H	rs min	e	f min					Cr N	Cor N		
12	0 -0.018	CFH12AB	CFH12UUAB	CFH12RAB	CFH12UURAB	30	14	12	M12×1.5	13	40	25	0.6	6	0.6	0.4	20	7 940	9 800	9 800	14 000	7 060	2 450	22	95
		CFH12VAB	CFH12VUUAB	CFH12VRAB	CFH12VUURAB													13 430	19 700	11 270	6 000				
12	0 -0.018	CFH12-1AB	CFH12-1UUAB	CFH12-1RAB	CFH12-1UURAB	32	14	12	M12×1.5	13	40	25	0.6	6	0.6	0.4	20	7 940	9 800	9 800	14 000	7 450	2 740	22	105
		CFH12-1VAB	CFH12-1VUUAB	CFH12-1VRAB	CFH12-1VUURAB													13 430	19 700	11 270	6 000				
16	0 -0.018	CFH16AB	CFH16UUAB	CFH16RAB	CFH16UURAB	35	18	16	M16×1.5	17	52	32.5	0.8	6	0.6	0.5	24	12 050	18 330	18 330	10 000	11 200	3 140	58	170
		CFH16VAB	CFH16VUUAB	CFH16VRAB	CFH16VUURAB													20 680	37 630	19 800	4 500				
18	0 -0.018	CFH18AB	CFH18UUAB	CFH18RAB	CFH18UURAB	40	20	18	M18×1.5	19	58	36.5	0.8	6	1	0.6	26	14 700	25 200	25 200	8 500	14 400	3 720	87	250
		CFH18VAB	CFH18VUUAB	CFH18VRAB	CFH18VUURAB													25 280	51 350	26 560	3 500				
20	0 -0.021	CFH20AB	CFH20UUAB	CFH20RAB	CFH20UURAB	52	24	20	M20×1.5	21	66	40.5	0.8	8	1	0.7	36	20 680	34 600	32 140	7 000	23 200	8 230	120	460
		CFH20VAB	CFH20VUUAB	CFH20VRAB	CFH20VUURAB													33 120	64 480	32 140	3 500				
20	0 -0.021	CFH20-1AB	CFH20-1UUAB	CFH20-1RAB	CFH20-1UURAB	47	24	20	M20×1.5	21	66	40.5	0.8	8	1	0.7	36	20 680	34 600	32 140	7 000	21 000	7 150	120	385
		CFH20-1VAB	CFH20-1VUUAB	CFH20-1VRAB	CFH20-1VUURAB													33 120	64 480	32 140	3 500				

CFH..AB TYPE has oil holes (grease nipple) which are prepared in the stud head and thread side, also an oil hole is prepared outer surface of stud.

* Without seals, suitable for grease lubrication. In case of oil lubrication, up to 130% of this value shall be permissible, and 70% of this value shall apply for types with seals.

OUTER RINGS TOLERANCE (μm)

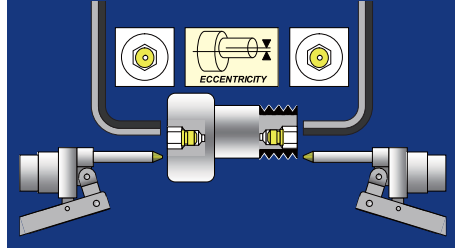
TYPE	Cylindrical outer ring	Crowned outer ring
CF12	0/-9	0/-50
CF12-1,CF16,CF18,CF20-1	0/-11	0/-50
CF20,CF24,CF24-1,CF30	0/-13	0/-50
CF30-1,CF30-2	0/-15	0/-50

ACCESSORIES

TYPE	Grease Nipple	NUT
All types	Installed	Attached

CAM FOLLOWERS

SOLID ECCENTRIC TYPE
HEXAGON SOCKET ON BOTH SIDES
GREASE NIPPLE INSTALLED



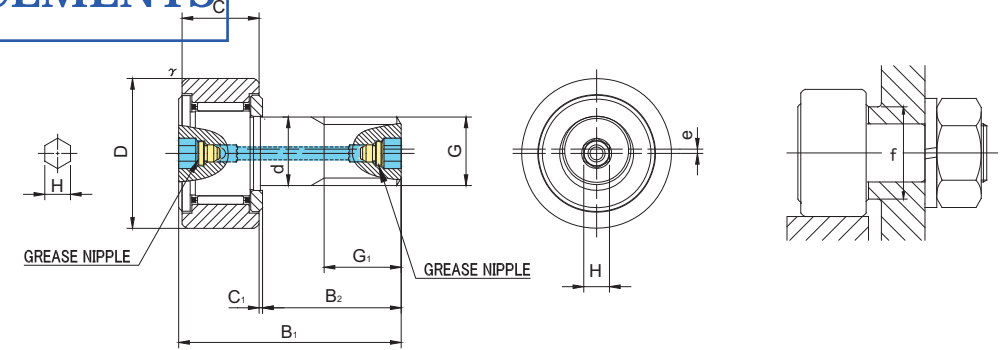
RECOMMENDED REPLACEMENTS



CFH..AB



CFH..VAB



CFH..AB TYPE

Prepacked Grease

Stud diameter (mm)	h7 tolerance	Designation				Dimensions (mm)												Basic dynamic load rating	Basic static load rating	Largest permissible load	Limiting speed *	Track load capacity		Max tightening torque	Mass
		Cylindrical outer ring		Crowned outer ring R1000(CF24 ≤)		D	C	d	G	G1	B1	B2	C1	H	rs min	e	f min					Cr N	Cor N		
24	0 -0.021	CFH24AB	CFH24UUAB	CFH24RAB	CFH24UURAB	62	29	24	M24×1.5	25	80	49.5	0.8	8	1	0.8	40	30 480	52 630	49 500	6 500	34 200	10 500	220	815
		CFH24VAB	CFH24VUUAB	CFH24VRAB	CFH24VUURAB													46 550	92 020	49 500	3 000				
24	0 -0.021	CFH24-1AB	CFH24-1UUAB	CFH24-1RAB	CFH24-1UURAB	72	29	24	M24×1.5	25	80	49.5	0.8	8	1	0.8	40	30 480	52 630	49 500	6 500	39 800	12 900	220	1 140
		CFH24-1VAB	CFH24-1VUUAB	CFH24-1VRAB	CFH24-1VUURAB													46 550	92 020	49 500	3 000				
30	0 -0.021	CFH30AB	CFH30UUAB	CFH30RAB	CFH30UURAB	80	35	30	M30×1.5	32	100	63	1	8	1	1	46	45 370	85 060	73 700	5 000	52 600	14 900	450	1 870
		CFH30VAB	CFH30VUUAB	CFH30VRAB	CFH30VUURAB													67 620	144 060	73 700	2 200				
30	0 -0.021	CFH30-1AB	CFH30-1UUAB	CFH30-1RAB	CFH30-1UURAB	85	35	30	M30×1.5	32	100	63	1	8	1	1	46	45 370	85 060	73 700	5 000	56 000	16 100	450	2 030
		CFH30-1VAB	CFH30-1VUUAB	CFH30-1VRAB	CFH30-1VUURAB													67 620	144 060	73 700	2 200				
30	0 -0.021	CFH30-2AB	CFH30-2UUAB	CFH30-2RAB	CFH30-2UURAB	90	35	30	M30×1.5	32	100	63	1	8	1	1	46	45 370	85 060	73 700	5 000	59 300	17 300	450	2 220
		CFH30-2VAB	CFH30-2VUUAB	CFH30-2VRAB	CFH30-2VUURAB													67 620	144 060	73 700	2 200				

CFH..AB TYPE has oil holes (grease nipple) which are prepared in the stud head and thread side, also an oil hole is prepared outer surface of stud.

* Without seals, suitable for grease lubrication. In case of oil lubrication, up to 130% of this value shall be permissible, and 70% of this value shall apply for types with seals.

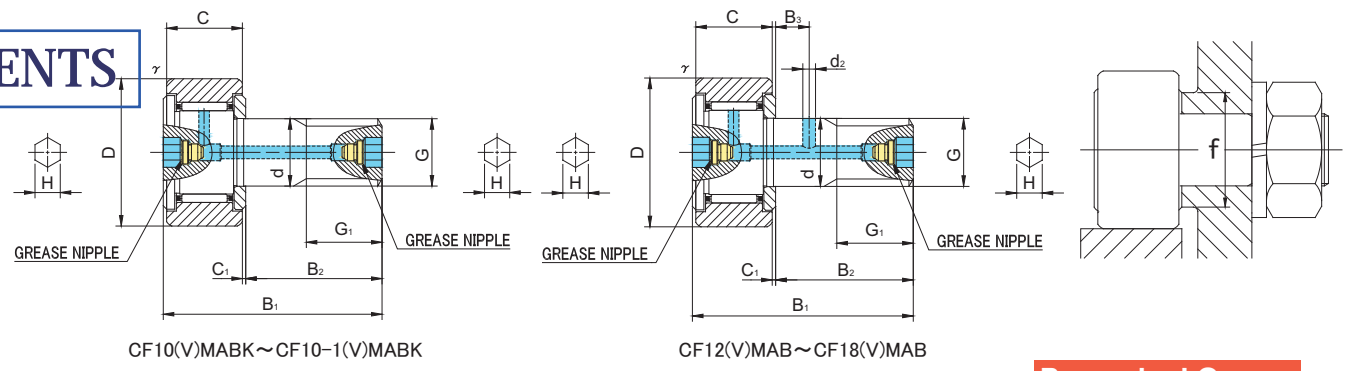
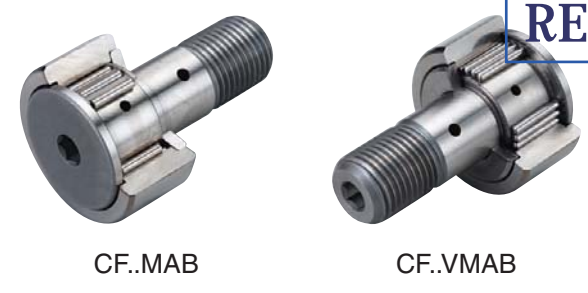
TYPE	Cylindrical outer ring	Crowned outer ring
CF12	0/-9	0/-50
CF12-1,CF16,CF18,CF20-1	0/-11	0/-50
CF20,CF24,CF24-1,CF30	0/-13	0/-50
CF30-1,CF30-2	0/-15	0/-50

TYPE	Grease Nipple	NUT
All types	Installed	Attached



[STAINLESS STEEL]

RECOMMENDED REPLACEMENTS



CF..MAB TYPE

Prepacked Grease

Stud diameter (mm)	h7 tolerance	Designation				Dimensions (mm)												Basic dynamic load rating Cr N	Basic static load rating Cor N	Largest permissible load N	Limiting speed * rpm	Track load capacity		Max tightening torque N·m	Mass g (approx)	
		Cylindrical outer ring		Crowned outer ring R500(CF10 ~ CF18)		D	C	d	G	G1	B1	B2	B3	C1	d2	H	rs min					f min	Cylindrical outer ring N			Crowned outer ring N
		Without seals	With seals	Without seals	With seals																					
10	0 -0.015	CF10MABK	CF10MUUABK	CF10MRABK	CF10MUURABK	22	12	10	M10×1	12	36	23	—	0.6	—	5	0.3	15	4 950	6 310	6 860	17 000	4 700	1 670	15	45
		CF10VMABK	CF10VMUUABK	CF10VMRABK	CF10VMUURABK														8 740	13 340	7 450	7 500				
10	0 -0.015	CF10-1MABK	CF10-1MUUABK	CF10-1MRABK	CF10-1MUURABK	26	12	10	M10×1	12	36	23	—	0.6	—	5	0.3	15	4 950	6 310	6 860	17 000	5 490	2 060	15	60
		CF10-1VMABK	CF10-1VMUUABK	CF10-1VMRABK	CF10-1VMUURABK														8 740	13 340	7 450	7 500				
12	0 -0.018	CF12MAB	CF12MUUAB	CF12MRAB	CF12MUURAB	30	14	12	M12×1.5	13	40	25	6	0.6	3	6	0.6	20	7 300	9 010	9 800	14 000	7 060	2 450	22	95
		CF12VMAB	CF12VMUUAB	CF12VMRAB	CF12VMUURAB														12 350	18 120	11 270	6 000				
12	0 -0.018	CF12-1MAB	CF12-1MUUAB	CF12-1MRAB	CF12-1MUURAB	32	14	12	M12×1.5	13	40	25	6	0.6	3	6	0.6	20	7 300	9 010	9 800	14 000	7 450	2 740	22	105
		CF12-1VMAB	CF12-1VMUUAB	CF12-1VMRAB	CF12-1VMUURAB														12 350	18 120	11 270	6 000				
16	0 -0.018	CF16MAB	CF16MUUAB	CF16MRAB	CF16MUURAB	35	18	16	M16×1.5	17	52	32.5	8	0.8	3	6	0.6	24	11 080	16 860	18 330	10 000	11 200	3 140	58	170
		CF16VMAB	CF16VMUUAB	CF16VMRAB	CF16VMUURAB														19 020	34 610	19 800	4 500				
18	0 -0.018	CF18MAB	CF18MUUAB	CF18MRAB	CF18MUURAB	40	20	18	M18×1.5	19	58	36.5	8	0.8	3	6	1	26	13 520	23 180	25 200	8 500	14 400	3 720	87	250
		CF18VMAB	CF18VMUUAB	CF18VMRAB	CF18VMUURAB														23 250	47 240	26 560	3 500				

CF..MAB TYPE has oil holes (grease nipple) which are prepared in the stud head and thread side, also an oil hole is prepared outer surface of stud.

* Without seals, suitable for grease lubrication. In case of oil lubrication, up to 130% of this value shall be permissible, and 70% of this value shall apply for types with seals.

OUTER RINGS TOLERANCE (µm)

TYPE	Cylindrical outer ring	Crowned outer ring
CF10,CF10-1,CF12	0/-9	0/-50
CF12-1,CF16,CF18,CF20-1	0/-11	0/-50
CF20,CF24,CF24-1,CF30	0/-13	0/-50
CF30-1,CF30-2	0/-15	0/-50

ACCESSORIES

TYPE	Installed	Attached
Grease Nipple		
NUT		



【STAINLESS STEEL】

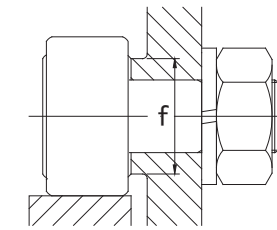
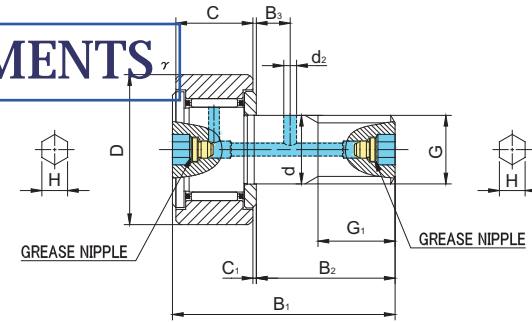
RECOMMENDED REPLACEMENTS



CF..MAB



CF..VMAB



CF..MAB TYPE

Prepacked Grease

Stud diameter (mm)	Designation	Dimensions (mm)															Basic dynamic load rating	Basic static load rating	Largest permissible load	Limiting speed *	Track load capacity		Max tightening torque	Mass	
		Cylindrical outer ring				Crowned outer ring R1000(CF20 ≤)				Other dimensions											Cylindrical outer ring N	Crowned outer ring N			N-m
h7 tolerance	Without seals	With seals	Without seals	With seals	D	C	d	G	G1	B1	B2	B3	C1	d2	H	rs min	f min	Cr N	Cor N	N	rpm	Cylindrical outer ring N	Crowned outer ring N	N-m	g (approx)
20	CF20MAB	CF20MUUAB	CF20MRAB	CF20MUURAB	52	24	20	M20×1.5	21	66	40.5	9	0.8	4	8	1	36	19 020	31 830	32 140	7 000	23 200	8 230	120	460
	CF20VMAB	CF20VMUAB	CF20VMRAB	CF20VMUURAB														30 470	59 320	32 140	3 500				
20	CF20-1MAB	CF20-1MUUAB	CF20-1MRAB	CF20-1MUURAB	47	24	20	M20×1.5	21	66	40.5	9	0.8	4	8	1	36	19 020	31 830	32 140	7 000	21 000	7 150	120	385
	CF20-1VMAB	CF20-1VMUAB	CF20-1VMRAB	CF20-1VMUURAB														30 470	59 320	32 140	3 500				
24	CF24MAB	CF24MUUAB	CF24MRAB	CF24MUURAB	62	29	24	M24×1.5	25	80	49.5	11	0.8	4	8	1	40	28 040	48 410	49 500	6 500	34 200	10 500	220	815
	CF24VMAB	CF24VMUAB	CF24VMRAB	CF24VMUURAB														42 820	84 650	49 500	3 000				
24	CF24-1MAB	CF24-1MUUAB	CF24-1MRAB	CF24-1MUURAB	72	29	24	M24×1.5	25	80	49.5	11	0.8	4	8	1	40	28 040	48 410	49 500	6 500	39 800	12 900	220	1 140
	CF24-1VMAB	CF24-1VMUAB	CF24-1VMRAB	CF24-1VMUURAB														42 820	84 650	49 500	3 000				
30	CF30MAB	CF30MUUAB	CF30MRAB	CF30MUURAB	80	35	30	M30×1.5	32	100	63	15	1	4	8	1	46	41 740	78 250	73 700	5 000	52 600	14 900	450	1 870
	CF30VMAB	CF30VMUAB	CF30VMRAB	CF30VMUURAB														62 210	132 530	73 700	2 200				
30	CF30-1MAB	CF30-1MUUAB	CF30-1MRAB	CF30-1MUURAB	85	35	30	M30×1.5	32	100	63	15	1	4	8	1	46	41 740	78 250	73 700	5 000	56 000	16 100	450	2 030
	CF30-1VMAB	CF30-1VMUAB	CF30-1VMRAB	CF30-1VMUURAB														62 210	132 530	73 700	2 200				
30	CF30-2MAB	CF30-2MUUAB	CF30-2MRAB	CF30-2MUURAB	90	35	30	M30×1.5	32	100	63	15	1	4	8	1	46	41 740	78 250	73 700	5 000	59 300	17 300	450	2 220
	CF30-2VMAB	CF30-2VMUAB	CF30-2VMRAB	CF30-2VMUURAB														62 210	132 530	73 700	2 200				

CF..MAB TYPE has oil holes (grease nipple) which are prepared in the stud head and thread side, also an oil hole is prepared outer surface of stud.

* Without seals, suitable for grease lubrication. In case of oil lubrication, up to 130% of this value shall be permissible, and 70% of this value shall apply for types with seals.

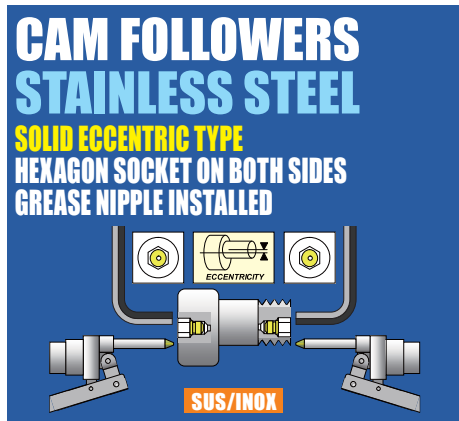
OUTER RINGS TOLERANCE (μm)

TYPE	Cylindrical outer ring	Crowned outer ring
CF10,CF10-1,CF12	0/-9	0/-50
CF12-1,CF16,CF18,CF20-1	0/-11	0/-50
CF20,CF24,CF24-1,CF30	0/-13	0/-50
CF30-1,CF30-2	0/-15	0/-50

ACCESSORIES

TYPE	Grease Nipple	NUT
All types	Installed	Attached

[STAINLESS STEEL]

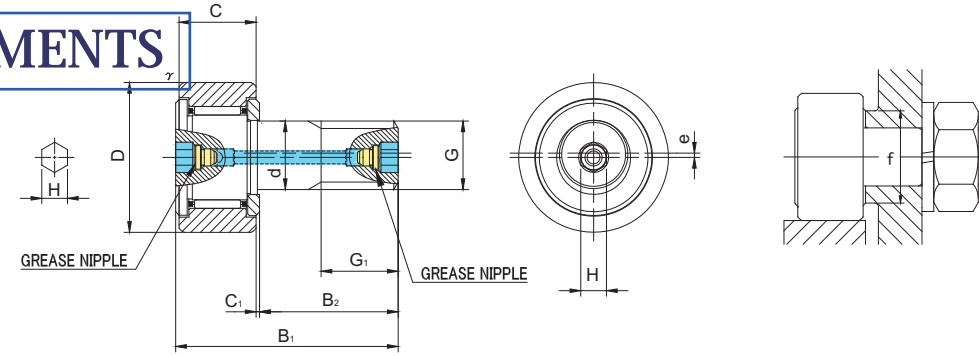


CFH..MAB



CFH..VMAB

RECOMMENDED REPLACEMENTS



Prepacked Grease

CFH..MAB TYPE

Stud diameter (mm)	h7 tolerance	Designation				Dimensions (mm)												Basic dynamic load rating Cr N	Basic static load rating Cor N	Largest permissible load N	Limiting speed * rpm	Track load capacity		Max tightening torque N·m	Mass g (approx)
		Cylindrical outer ring		Crowned outer ring R500(CF12 ~ CF18) R1000(CF20 ≤)		D	C	d	G	G1	B1	B2	C1	H	rs min	e	f min					Cylindrical outer ring N	Crowned outer ring N		
12	0 -0.018	CFH12MAB	CFH12MUUAB	CFH12MRAB	CFH12MUURAB	30	14	12	M12×1.5	13	40	25	0.6	6	0.6	0.4	20	7 300	9 010	9 800	14 000	7 060	2 450	22	95
		CFH12VMAB	CFH12VMUAB	CFH12VMRAB	CFH12VMUURAB													12 350	18 120	11 270	6 000				
12	0 -0.018	CFH12-1MAB	CFH12-1MUAB	CFH12-1MRAB	CFH12-1MUURAB	32	14	12	M12×1.5	13	40	25	0.6	6	0.6	0.4	20	7 300	9 010	9 800	14 000	7 450	2 740	22	105
		CFH12-1VMAB	CFH12-1VMUAB	CFH12-1VMRAB	CFH12-1VMUURAB													12 350	18 120	11 270	6 000				
16	0 -0.018	CFH16MAB	CFH16MUUAB	CFH16MRAB	CFH16MUURAB	35	18	16	M16×1.5	17	52	32.5	0.8	6	0.6	0.5	24	11 080	16 860	18 330	10 000	11 200	3 140	58	170
		CFH16VMAB	CFH16VMUAB	CFH16VMRAB	CFH16VMUURAB													19 020	34 610	19 800	4 500				
18	0 -0.018	CFH18MAB	CFH18MUUAB	CFH18MRAB	CFH18MUURAB	40	20	18	M18×1.5	19	58	36.5	0.8	6	1	0.6	26	13 520	23 180	25 200	8 500	14 400	3 720	87	250
		CFH18VMAB	CFH18VMUAB	CFH18VMRAB	CFH18VMUURAB													23 250	47 240	26 560	3 500				
20	0 -0.021	CFH20MAB	CFH20MUUAB	CFH20MRAB	CFH20MUURAB	52	24	20	M20×1.5	21	66	40.5	0.8	8	1	0.7	36	19 020	31 830	32 140	7 000	23 200	8 230	120	460
		CFH20VMAB	CFH20VMUAB	CFH20VMRAB	CFH20VMUURAB													30 470	59 320	32 140	3 500				
20	0 -0.021	CFH20-1MAB	CFH20-1MUAB	CFH20-1MRAB	CFH20-1MUURAB	47	24	20	M20×1.5	21	66	40.5	0.8	8	1	0.7	36	19 020	31 830	32 140	7 000	21 000	7 150	120	385
		CFH20-1VMAB	CFH20-1VMUAB	CFH20-1VMRAB	CFH20-1VMUURAB													30 470	59 320	32 140	3 500				

CFH..MAB TYPE has oil holes (grease nipple) which are prepared in the stud head and thread side, also an oil hole is prepared outer surface of stud.

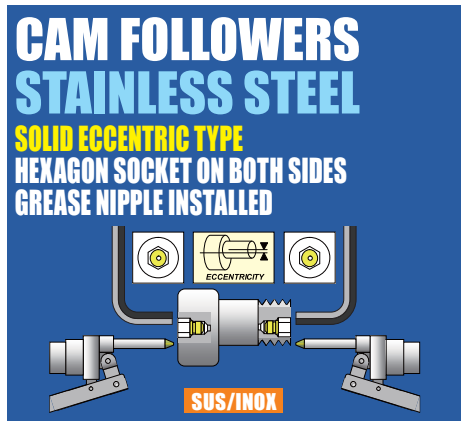
* Without seals, suitable for grease lubrication. In case of oil lubrication, up to 130% of this value shall be permissible, and 70% of this value shall apply for types with seals.

OUTER RINGS TOLERANCE (µm)

TYPE	Cylindrical outer ring	Crowned outer ring
CF12	0/-9	0/-50
CF12-1,CF16,CF18,CF20-1	0/-11	0/-50
CF20,CF24,CF24-1,CF30	0/-13	0/-50
CF30-1,CF30-2	0/-15	0/-50

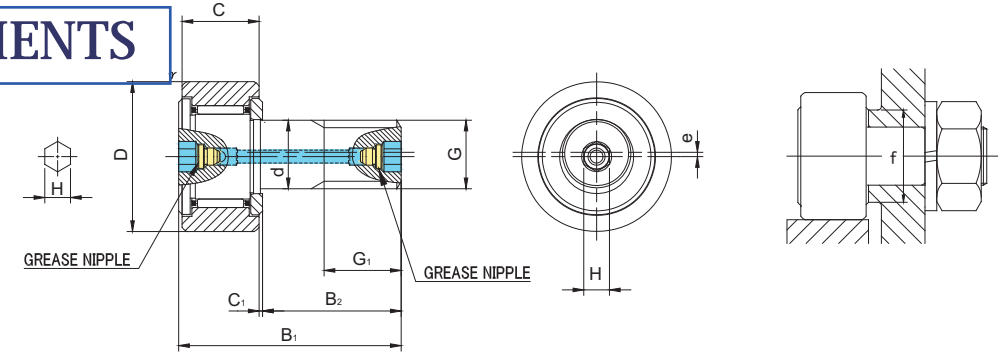
ACCESSORIES

TYPE	Grease Nipple	NUT
All types	Installed	Attached



[STAINLESS STEEL]

RECOMMENDED REPLACEMENTS



CFH..MAB TYPE

Prepacked Grease

Stud diameter (mm)	h7 tolerance	Designation				Dimensions (mm)												Basic dynamic load rating Cr N	Basic static load rating Cor N	Largest permissible load N	Limiting speed * rpm	Track load capacity		Max tightening torque N-m	Mass g (approx)
		Cylindrical outer ring		Crowned outer ring R1000(CF24 ≤)		D	C	d	G	G1	B1	B2	C1	H	rs min	e	f min					Cylindrical outer ring N	Crowned outer ring N		
		Without seals	With seals	Without seals	With seals																				
24	0 -0.021	CFH24MAB	CFH24MUUAB	CFH24MRAB	CFH24MUURAB	62	29	24	M24×1.5	25	80	49.5	0.8	8	1	0.8	40	28 040	48 410	49 500	6 500	34 200	10 500	220	815
		CFH24VMAB	CFH24VMUAB	CFH24VMRAB	CFH24VMUURAB													42 820	84 650	49 500	3 000				
24	0 -0.021	CFH24-1MAB	CFH24-1MUUAB	CFH24-1MRAB	CFH24-1MUURAB	72	29	24	M24×1.5	25	80	49.5	0.8	8	1	0.8	40	28 040	48 410	49 500	6 500	39 800	12 900	220	1 140
		CFH24-1VMAB	CFH24-1VMUAB	CFH24-1VMRAB	CFH24-1VMUURAB													42 820	84 650	49 500	3 000				
30	0 -0.021	CFH30MAB	CFH30MUUAB	CFH30MRAB	CFH30MUURAB	80	35	30	M30×1.5	32	100	63	1	8	1	1	46	41 740	78 250	73 700	5 000	52 600	14 900	450	1 870
		CFH30VMAB	CFH30VMUAB	CFH30VMRAB	CFH30VMUURAB													62 210	132 530	73 700	2 200				
30	0 -0.021	CFH30-1MAB	CFH30-1MUUAB	CFH30-1MRAB	CFH30-1MUURAB	85	35	30	M30×1.5	32	100	63	1	8	1	1	46	41 740	78 250	73 700	5 000	56 000	16 100	450	2 030
		CFH30-1VMAB	CFH30-1VMUAB	CFH30-1VMRAB	CFH30-1VMUURAB													62 210	132 530	73 700	2 200				
30	0 -0.021	CFH30-2MAB	CFH30-2MUUAB	CFH30-2MRAB	CFH30-2MUURAB	90	35	30	M30×1.5	32	100	63	1	8	1	1	46	41 740	78 250	73 700	5 000	59 300	17 300	450	2 220
		CFH30-2VMAB	CFH30-2VMUAB	CFH30-2VMRAB	CFH30-2VMUURAB													62 210	132 530	73 700	2 200				

CFH..MAB TYPE has oil holes (grease nipple) which are prepared in the stud head and thread side, also an oil hole is prepared outer surface of stud.

* Without seals, suitable for grease lubrication. In case of oil lubrication, up to 130% of this value shall be permissible, and 70% of this value shall apply for types with seals.

OUTER RINGS TOLERANCE (µm)

TYPE	Cylindrical outer ring	Crowned outer ring
CF12	0/-9	0/-50
CF12-1,CF16,CF18,CF20-1	0/-11	0/-50
CF20,CF24,CF24-1,CF30	0/-13	0/-50
CF30-1,CF30-2	0/-15	0/-50

ACCESSORIES

TYPE	Grease Nipple	NUT
All types	Installed	Attached